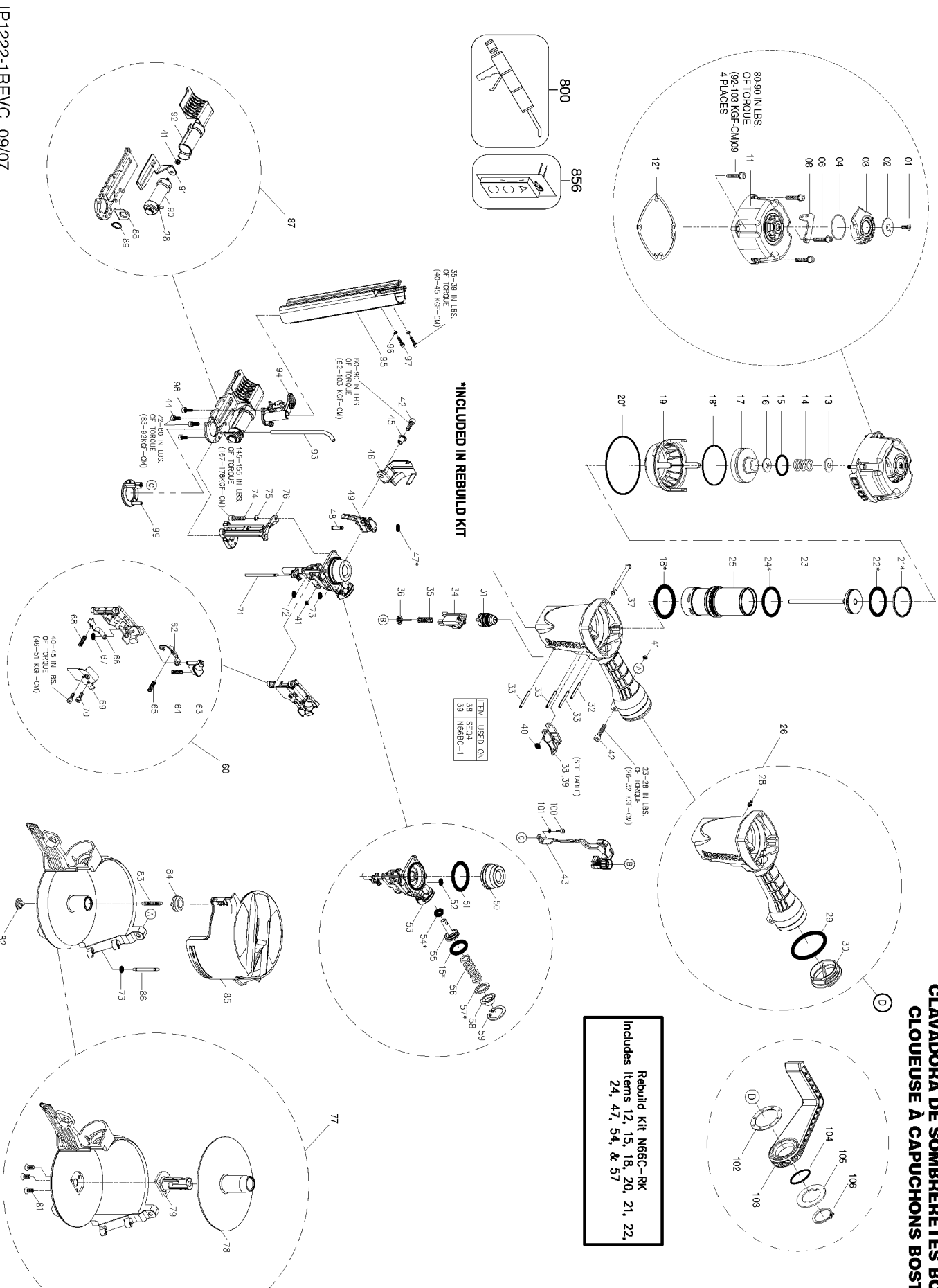


N66BC

**BOSTITCH CAP NAILER
CLAVADORA DE SOMBRENETES BOSTITCH
CLOUSEUSE À CAPUCHONS BOSTITCH**

Rebuild Kit N66C-RK
Includes Items 12, 15, 18, 20, 21, 22,
24, 47, 54, & 57



Parts List for N66BC-1 Type 0

| Item Number | Part Number | Description | Qty Required |
|-------------|-------------|----------------------|--------------|
| 1 | 174041 | SCREW-SFHCS-M4X0.7X1 | 1 |
| 2 | 174042 | SPACER-EXHAUST COVER | 1 |
| 3 | 174043 | COVER-EXHAUST | 1 |
| 4 | 174044 | O-RING-41.0MMX1.78MM | 1 |
| 6 | 175554 | SCREW-SHCS-M5X0.80X3 | 1 |
| 8 | P3186300565 | MAGAZINE HANGER | 1 |
| 9 | 175554 | SCREW-SHCS-M5X0.80X3 | 4 |
| 11 | G5400700 | DEFLECTOR UNIT | 1 |
| 12 | 174050 | GASKET-FRAME/DEFLECT | 1 |
| 13 | 174049 | SEAL-DEFLECTOR | 1 |
| 14 | 174051 | SPRING-COMPRESSION | 1 |
| 15 | 174053 | O-RING-20.8MMX2.4MM | 1 |
| 16 | 174052 | WASHER-SPECIAL | 1 |
| 17 | 174054 | PISTON-HEAD VALVE | 1 |
| 18 | 86460 | O-RING | 1 |
| 19 | 174057 | COLLAR-CYLINDER SLEE | 1 |
| 20 | 174056 | O-RING-66.5MMX2.0MM | 1 |
| 21 | P2320006600 | SEAL RING | 1 |
| 22 | S06S003600 | O-RING | 1 |
| 23 | G0315900 | DRIVER ASSEMBLY | 1 |
| 24 | 174058 | O-RING-45.5MMX2.0MM | 1 |
| 25 | P2322001100 | CYLINDER | 1 |
| 26 | G7001300 | FRAME UNIT | 1 |
| 28 | P1716102300 | AIR FITTING | 1 |
| 29 | 174067 | O-RING-45.7MMX2.62MM | 1 |
| 30 | P3490000540 | END CAP | 1 |
| 31 | TVA6 | KIT-TRIGGER VALVE | 1 |

Parts List for N66BC-1 Type 0

| Item Number | Part Number | Description | Qty Required |
|-------------|-------------|----------------------|--------------|
| 32 | 174070 | PIN-SPRING-M3X22MM | 1 |
| 33 | 174071 | PIN-SPRING-M3X30MM | 1 |
| 34 | P2840002766 | SAFETY GUIDE | 1 |
| 35 | P2325202662 | SPRING | 1 |
| 36 | P2845203062 | SPRING HOLDER | 1 |
| 37 | 174062 | STEPPED PIN | 1 |
| 38 | SEQ4 | KIT | 1 |
| 39 | CNTK1 | KIT-CONTACT TRIP CON | 1 |
| 40 | 174073 | O-RING | 1 |
| 41 | 174065 | NUT-NYLON LOCK-M5X0. | 1 |
| 42 | 1A105201 | HEX SOC.HD.BOLT | 1 |
| 43 | G4007500 | ASSEMBLY-CONTACT ARM | 1 |
| 44 | S0110510101 | HEX.SOC.HD.BOLT | 2 |
| 45 | P2325205662 | MAGAZINE SPACER | 1 |
| 46 | P3130000566 | GUARD | 1 |
| 47 | S06A000500 | O-RING | 1 |
| 48 | P2325207562 | SPRING PIN | 1 |
| 49 | G7600200 | ASSEMBLY-FEED JAW/CO | 1 |
| 50 | 174075 | BUMPER-PISTON STOP | 1 |
| 51 | 851483-S | O-RING | 1 |
| 52 | S06P000400 | O-RING | 1 |
| 53 | P2840001065 | NOSE | 1 |
| 54 | S06P000900 | O-RING | 1 |
| 55 | P2325504962 | FEED PISTON | 1 |
| 56 | P2325205062 | SPRING | 1 |
| 57 | P2322005100 | FEED PISTON BUMPER | 1 |
| 58 | P2325205262 | FEED PISTON COVER | 1 |

Parts List for N66BC-1 Type 0

| Item Number | Part Number | Description | Qty Required |
|-------------|-------------|----------------------|--------------|
| 59 | S15202800 | C-RING | 1 |
| 60 | 188721 | ASSEMBLY-DOOR | 1 |
| 62 | P2325204262 | UPPER NAIL STOPPER | 1 |
| 63 | P2320010000 | DOOR LATCH | 1 |
| 64 | P2820004162 | SPRING | 1 |
| 65 | P2320004100 | SPRING | 1 |
| 66 | P2325204062 | SECOND NAIL STOPPER | 1 |
| 67 | P2840004100 | GROMMET | 1 |
| 68 | P2320003900 | SPRING | 1 |
| 69 | P2325203862 | DOOR COVER | 1 |
| 70 | S0110412101 | HEX.SOC.HD.BOLT | 2 |
| 71 | P2325203662 | DOOR PIVOT PIN | 1 |
| 72 | S06S000401 | O-RING | 1 |
| 73 | S06P000300 | O-RING | 1 |
| 74 | S0110625101 | HEX.SOC.HD.BOLT | 2 |
| 75 | S2710620101 | HEX.SOC.HD.BOLT | 1 |
| 76 | P3180000265 | FIXED SUPPORT | 1 |
| 77 | P2840003200 | ASSEMBLY-MAGAZINE | 1 |
| 78 | P2840002366 | NAIL HOLDER | 1 |
| 79 | P2840002466 | ADJUSTING POST | 1 |
| 81 | S1410408400 | SELF TAPPING SCREW | 3 |
| 82 | P1960004066 | CAP | 1 |
| 83 | P1965204762 | SPRING | 1 |
| 84 | P1960004866 | CAP | 1 |
| 85 | P2840002566 | MAGAZINE COVER | 1 |
| 86 | P2845202662 | PIN | 1 |
| 87 | G7800300 | MAGAZINE CYLINDER UN | 1 |

Parts List for N66BC-1 Type 0

| Item Number | Part Number | Description | Qty Required |
|-------------|-------------|----------------------|--------------|
| 88 | P3136302265 | MAGAZINE C UNIT | 1 |
| 89 | S15101400 | C-RING | 1 |
| 90 | G6300100 | CYLINDER B UNIT | 1 |
| 91 | P1776301465 | PUSHER C | 1 |
| 92 | P1710003066 | CYLINDER COVER | 1 |
| 93 | P3180001100 | PIPE | 1 |
| 94 | G3101700 | SLIDING SEAT UNIT | 1 |
| 95 | P3180001000 | MAGAZINE B UNIT | 1 |
| 96 | S31104075 | SAFE WASHER | 2 |
| 97 | S0110408100 | HEX.SOC.HD.BOLT | 2 |
| 98 | S0110514101 | HEX.SOC.HD.BOLT | 1 |
| 99 | G3801865 | SAFETY B UNIT | 1 |
| 100 | S0110410101 | HEX.SOC.HD.BOLT | 1 |
| 101 | P3185201362 | BUSHING | 1 |
| 102 | 175582 | SEAT PLATE-HOOK | 1 |
| 103 | 175583 | HOOK | 1 |
| 104 | 175557 | O-RING-21.9MMX2.62MM | 1 |
| 105 | 175585 | CAP-HOOK | 1 |
| 106 | 175586 | RING-RETAINING | 1 |
| 800 | 100679 | LUBE (1LB.CAN) | 1 |
| 800 | 100653 | LUBE (2CC) | 1 |