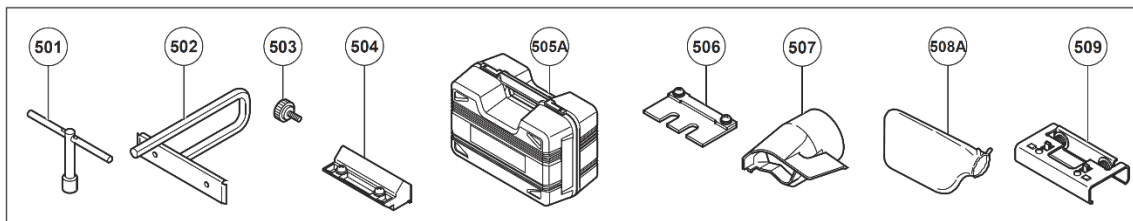
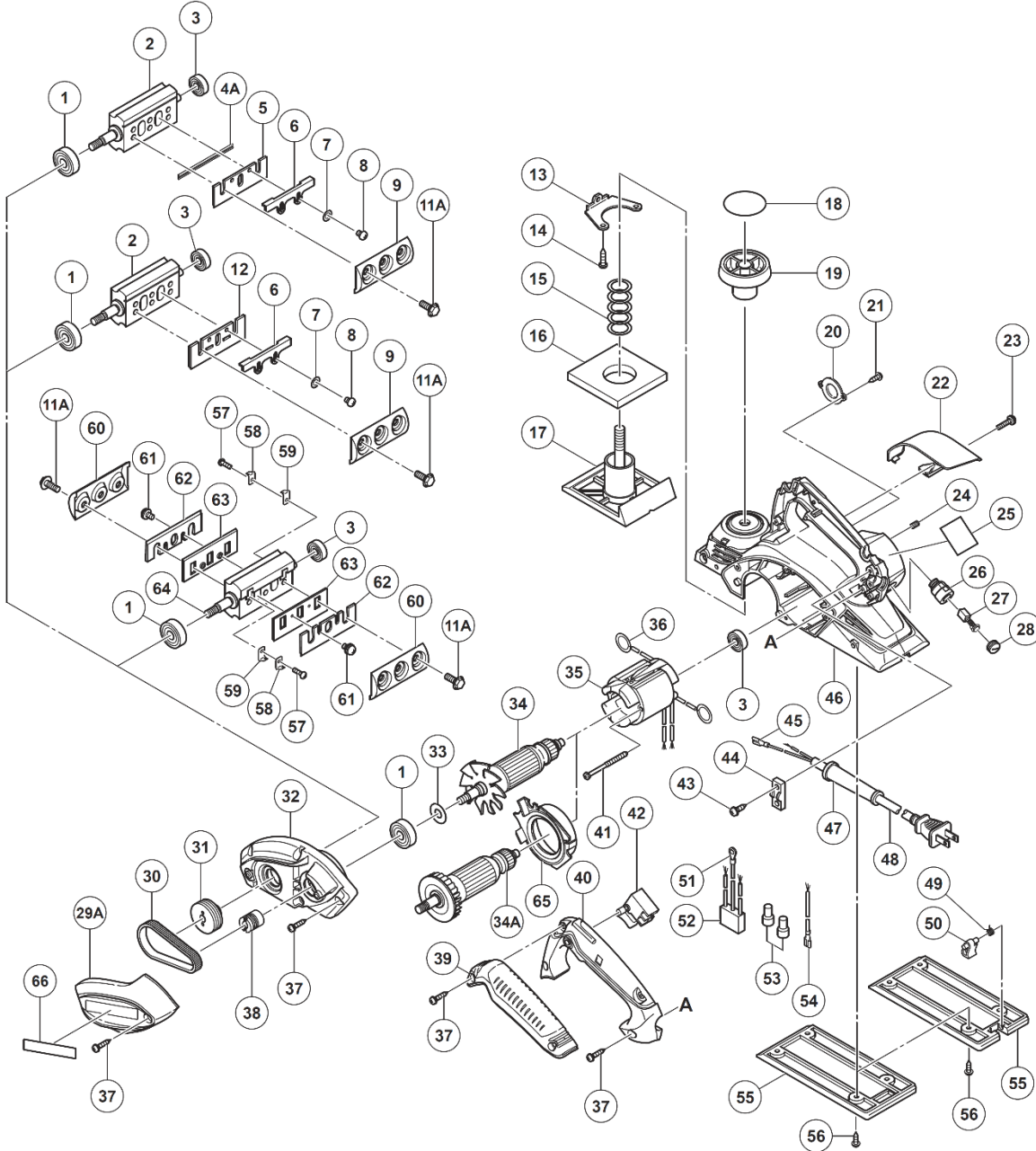


ELECTRIC TOOL PARTS LIST

■ **PLANER**
Model P 20ST

2020 • 05 • 22

(E3)



MODEL
P20ST

PARTS

P20ST

ITEM NO.	CODE NO.	DESCRIPTION	NO. USED	REMARKS
1	6200VV	BALL BEARING 6200VVCMP2L	2	
2	334480	CUTTER BLOCK ASS'Y (W/B.B)	1	INCLUD.1.3 EXCEPT FOR IND
3	608VVM	BALL BEARING 608VVC2PS2L	2	
4A	336571	PLANER BLADES (1 PAIR)	2	FOR DOUBLE EDGE BLADE TYPE
5	334478	SET PLATE (B) (1 PAIR)	2	FOR DOUBLE EDGE BLADE TYPE
6	314754	SET PLATE (A)	2	EXCEPT FOR IND
7	949423	WASHER M4 (10 PCS.)	4	EXCEPT FOR IND
8	949213	MACHINE SCREW M4X5 (10 PCS.)	4	EXCEPT FOR IND
9	316398	BLADE HOLDER (1 PAIR)	2	EXCEPT FOR IND
11A	336574	BOLT M6	6	
12	314746	PLANER BLADES 82MM (1 PAIR)	2	EXCEPT FOR DBL EDGE BLADE TYPE
13	958945	SCREW PLATE	1	
14	954004	TAPPING SCREW D4X16	1	
15	958709	SPRING	1	
16	958708	RUBBER PACKING	1	
17	334738	FRONT BASE	1	
18		SCALE	1	
19	942328	KNOB	1	
20	334492	BEARING COVER	1	
21	309470	TAPPING SCREW (W/FLANGE) D4X12 (BLACK)	2	
22	334501	TIP COVER	1	
23	333163	MACHINE SCREW (BLACK) M4X16	1	
24	938477	HEX. SOCKET SET SCREW M5X8	2	
25		NAME PLATE	1	
26	957571	BRUSH HOLDER	2	
27	999021	CARBON BRUSH (1 PAIR)	2	
28	931266	BRUSH CAP	2	
29A	334487	BELT COVER	1	
30	958718	BELT	1	
31	334491	PULLEY (B)	1	
32	334716	END BRACKET	1	
33	334713	WASHER (A)	1	
*34	360942U	ARMATURE ASS'Y 120V	1	INCLUD.1.3
*35	340835C	STATOR ASS'Y 110V-120V	1	INCLUD.36 FOR USA.CAN (120V).
36	931867	BRUSH TERMINAL	2	
37	301653	TAPPING SCREW (W/FLANGE) D4X20 (BLACK)	10	
38	334490	PULLEY (A)	1	
39	334717	GRIP COVER	1	
40	334484	HANDLE COVER	1	
41	960108	HEX. HD. TAPPING SCREW D4X60	2	
*42	322101	SWITCH	1	W/ON LOCK TYPE
43	984750	TAPPING SCREW (W/FLANGE) D4X16	2	
44	937631	CORD CLIP	1	
45	331707	FASTON	1	
*46	334482	HOUSING ASS'Y	1	INCLUD.13.14.24.26
*46	334483	HOUSING ASS'Y	1	INCLUD.13.14.24.26 FOR USA.CAN
*47	953327	CORD ARMOR D8.8	1	
*48	500432Z	CORD	1	FOR USA.CAN.MEX.
49	334499	STAND	1	FOR USA.CAN
50	334500	SPRING	1	FOR USA.CAN
*51	961419Z	TERMINAL	1	FOR AUS.NZL.SAF.GBR.EUROPE.NOR
*52	334472	NOISE SUPPRESSOR	1	FOR AUS.NZL.SAF.GBR.EUROPE.
*53	959140	CONNECTOR 50091 (10 PCS.)	1	
*53	959141	CONNECTOR 50092 (10 PCS.)	2	
*54	331269	INTERNAL WIRE	1	FOR AUS.NZL.SAF.GBR.EUROPE.
*55	334838	REAR BASE	1	FOR USA.CAN
56	307811	TAPPING SCREW (W/FLANGE) D4X16 (BLACK)	4	
57	949216	MACHINE SCREW M4X10 (10 PCS.)	4	FOR IND
58	958731Z	HOLDER SPRING (B)	4	FOR IND
59	958732Z	GUARD PLATE (A)	4	FOR IND
60	958734Z	BLADE HOLDER (1 PAIR)	2	FOR IND
61	976815	MACHINE SCREW (W/WASHERS) M4X8	4	FOR IND
62	958728	PLANER BLADES 82MM (1 PAIR)	2	FOR IND

