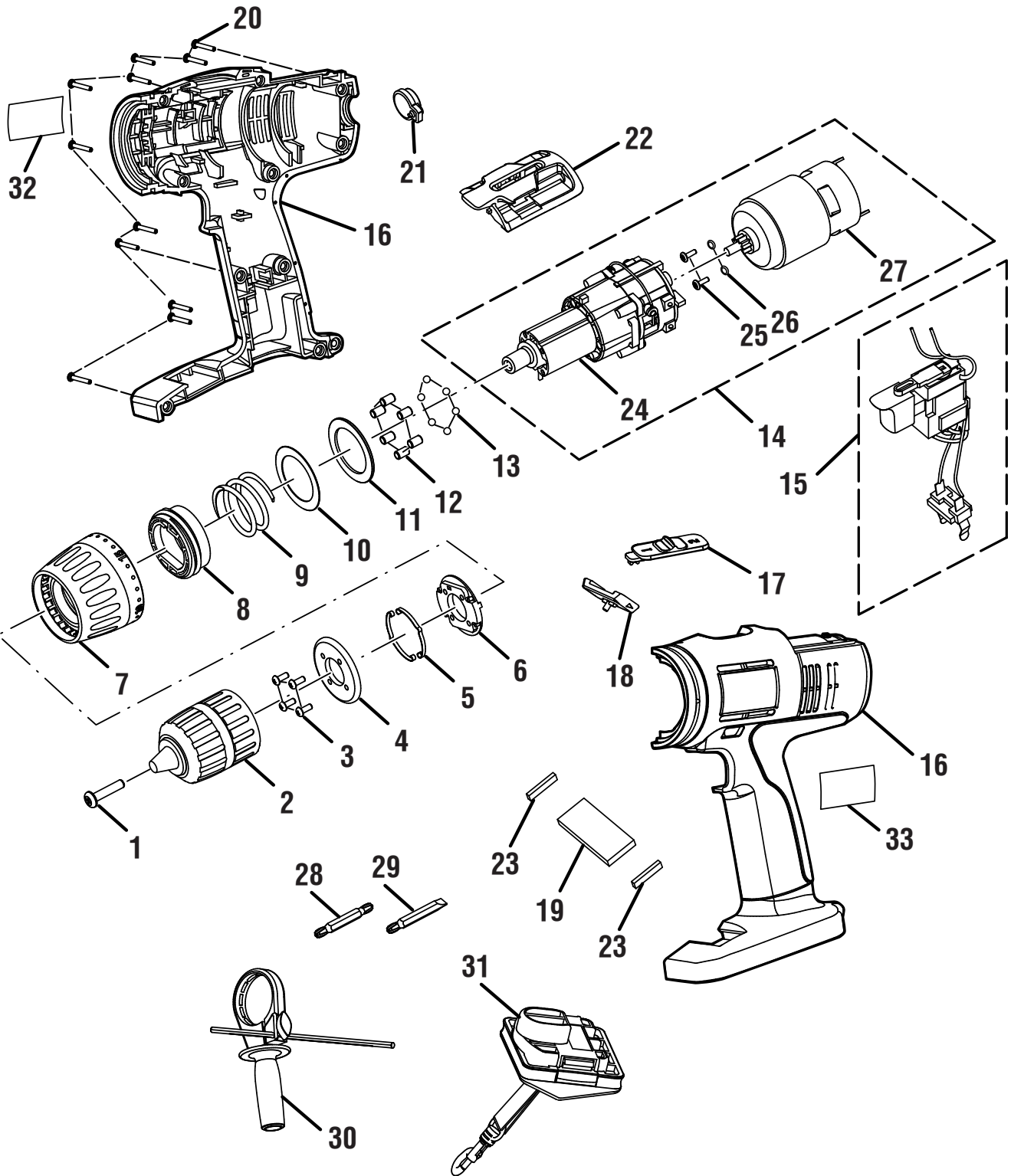


RYOBI 1/2 in. (13 mm) HAMMER DRILL - MODEL NUMBER P210



RYOBI 1/2 in. (13 mm) HAMMER DRILL – MODEL NUMBER P210

The model number will be found on a label attached to the motor housing. Always mention the model number in all correspondence regarding your **Hammer Drill** or when ordering repair parts.

PARTS LIST

Key No.	Part Number	Description	Qty.
1	6613402	Screw (M6 X 1.0 x 27 mm, Left Hand)	1
2	6903329	Chuck (1/2 in.)	1
3	6620311	Screw (M3 x 20 mm, Pan Hd.)	4
4	6359801	Mounting Plate	1
5	6392201	Spring Plate.....	2
6	5434610	Spring Holder	1
7	5913801	Clutch Cap	1
8	5437202	Sleeve.....	1
9	6843401	Torque Spring.....	1
10	6854701	Washer	1
11	6710501	Clutch Washer.....	1
12	6833802	Pin	6
13	6721901	Ball	6
14	200293011	Motor & Gear Train Assembly (Inc. Key Nos. 24-27).....	1
15	270001273	Switch Assembly.....	1
16	200202342	Housing Assembly w/ Label.....	1
17	4089401	2-Speed Change Knob	1
18	5987601	Forward / Reverse Selector	1
19	6000303	Magnet	1
20	6620614	Screw (M3.5 x 14 mm, Pan Hd.)	11
21	304152003	Rear Level Assembly.....	1
22	300034002	Bit Storage Assembly.....	1
23	560444002	Foam Rubber	2
24	220016045	Gear Box Assembly	1
25	6621202	Screw (M4 x 10 mm, Pan Hd.)	2
26	6703001	Spring Washer.....	2
27	2303304	Motor Assembly	1
28	6782044	Double Ended Bit (Ph 3 and S7)	1
29	6782045	Double Ended Bit (Ph 2 and S6)	1
30	300188012	Auxiliary Handle w/ Depth Guage Assembly	1
31	200292003	Plug in Lanyard	1
32	940237052	Data Label.....	1
33	940203044	Logo Label	1
	983000540	Operator's Manual (960223353)	
	12-06-11		
	(Rev:04)		