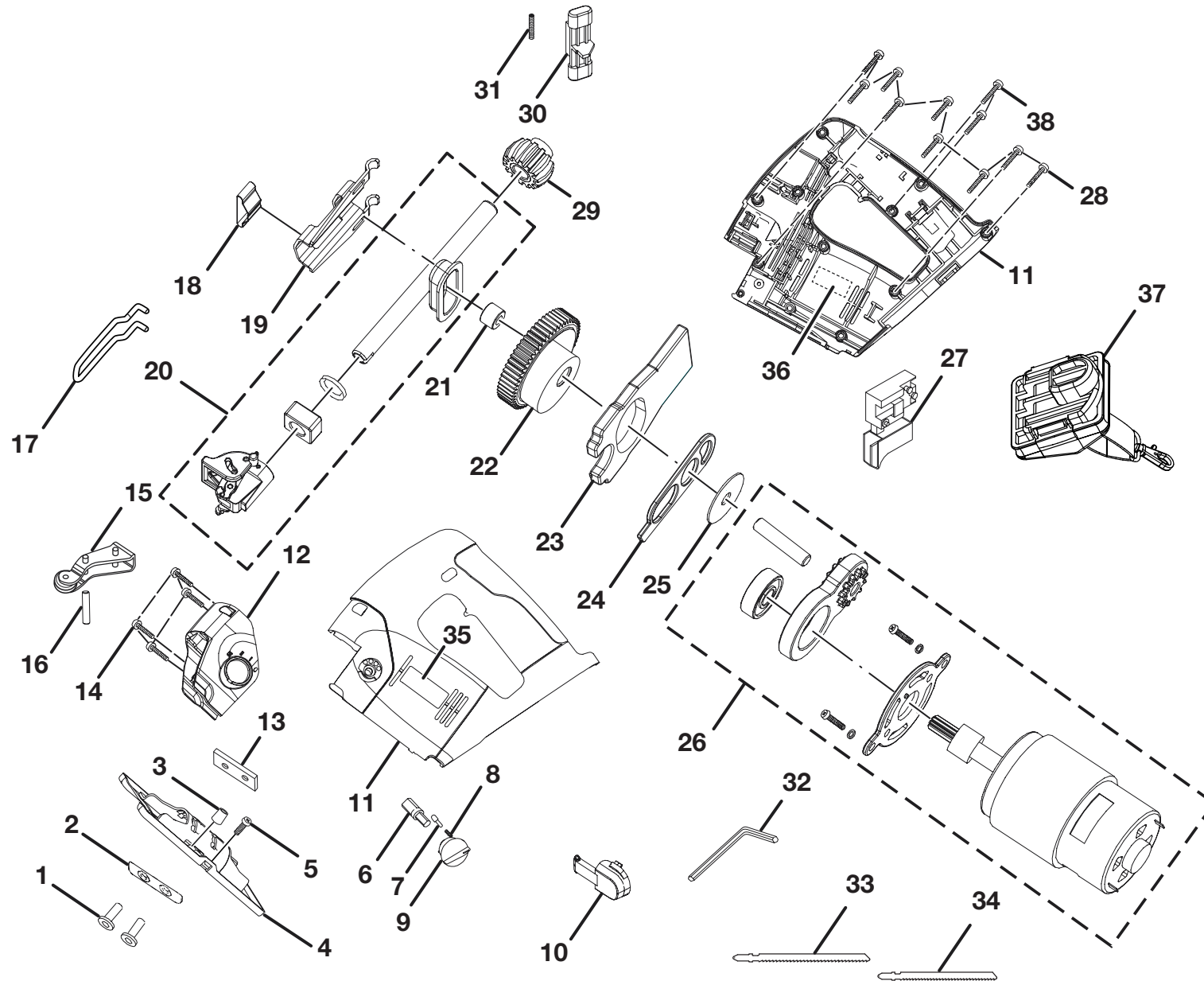


RYOBI ORBITAL JIG SAW – MODEL NUMBER P520



RYOBI ORBITAL JIG SAW – MODEL NUMBER P520

The model number will be found on a plate attached to the motor housing. Always mention the model number in all correspondence regarding your

PARTS LIST

KEY NO.	PART NUMBER	DESCRIPTION	QTY	KEY NO.	PART NUMBER	DESCRIPTION	QTY
1	660302002	* SCREW (10-24 X 1/2 in.)	2	22	220016087	GEAR ASSEMBLY	1
2	630847003	PLATE CLAMP	1	23	630842002	COUNTER WEIGHT	1
3	550432001	RUBBER TUBE	1	24	630843002	DRIVE PLATE	1
4	630846005	BASE	1	25	630844001	WASHER	1
5	660302001	* SCREW (10-24 X 3/8 in.)	1	26	230033052	MOTOR ASSEMBLY	1
6	680910001	STEEL ROD	1	27	270018093	SWITCH ASSEMBLY	1
7	550424001	DETENT BUTTON	1	28	6620805	* SCREW (M4 X16 mm)	9
8	680909001	SPRING	1	29	300306012	HEAT SINK ASSEMBLY W/BEARING	1
9	380425004	ORBIT KNOB	1	30	511552001	SAFETY BUTTON	1
10	511551001	DOOR	1	31	670998004	SPRING	1
11	200202281	HOUSING ASSEMBLY	1	32	680907001	HEX KEY (1/8 in.)	1
12	640780001	FRONT COVER	1	33	690227035	BLADE	1
13	630848002	STRIP NUT	1	34	690227036	BLADE	1
14	660032002	* SCREW (M3.5 X 12 mm)	4	35	940213038	LOGO LABEL	1
15	300577012	BLADE GUIDE ASSEMBLY	1	36	940214086	DATA LABEL	1
16	680906001	PIN	1	37	200292003	PLUG-IN LANYARD	1
17	680937004	WIRE GUARD	1	38	6627201	* SCREW (M4 X 14 mm)	2
18	630849001	RETURN SPRING	1	39	680915002	OPTIONAL EDGE GUIDE (NOT SHOWN)	1
19	630845001	SLIDE GUIDE PLATE	1		983000544	OPERATOR'S MANUAL (960223357)	
20	300669005	QUICK CLAMP BLADE ASSEMBLY	1		983000544R	REPAIR SHEET (REV:02)	
21	300019002	BUSHING ASSEMBLY	1		03-09-06		

*** STANDARD HARDWARE ITEM – MAY BE PURCHASED LOCALLY**