

RYOBI 18 VOLT CORDLESS COMPOUND MITER SAW – MODEL NUMBER P550

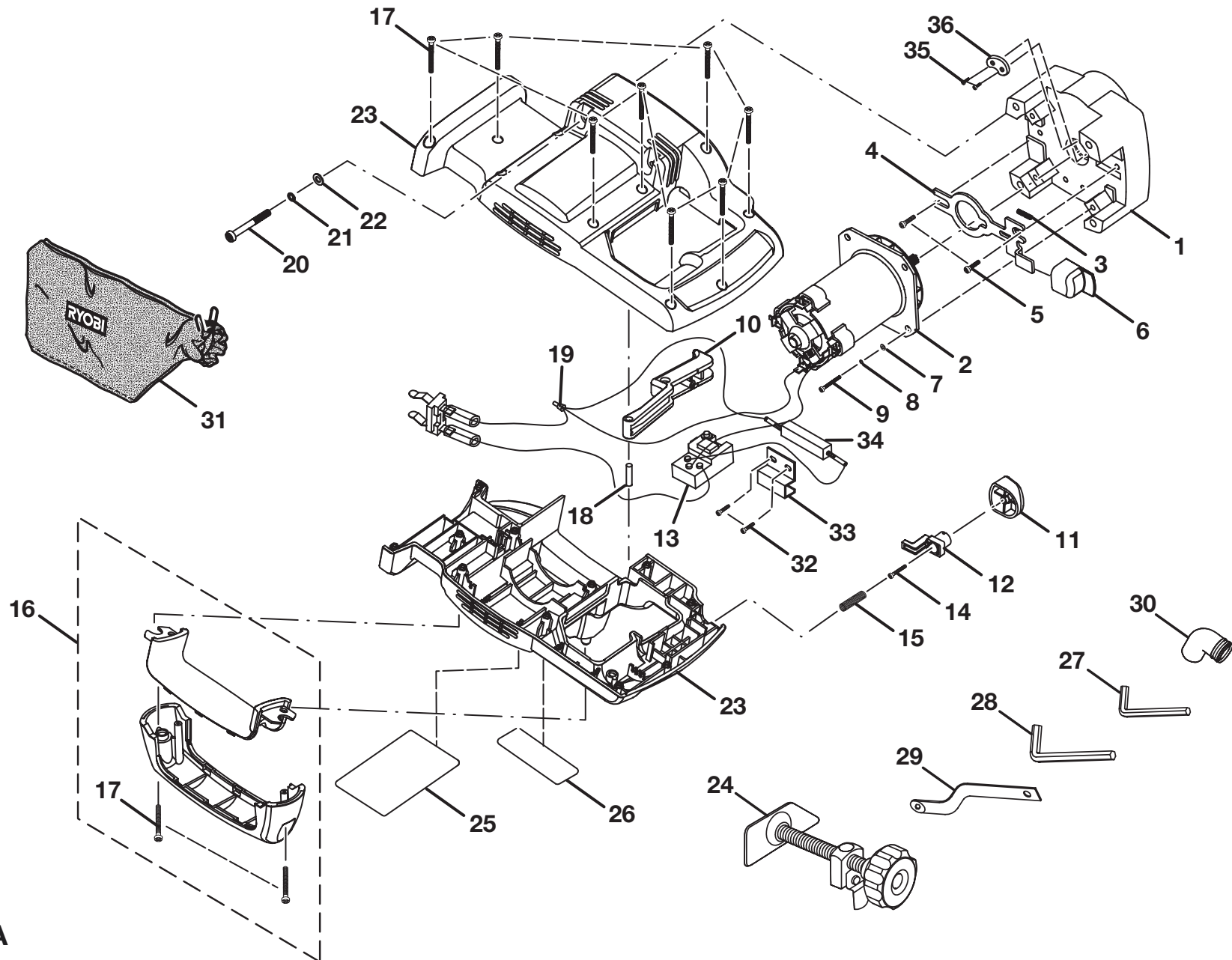


Figure A

## RYOBI 18 VOLT CORDLESS COMPOUND MITER SAW – MODEL NUMBER P550

The model number will be found on a plate attached to the motor housing. Always mention the model number in all correspondence regarding your **COMPOUND MITER SAW** or when ordering repair parts.

### PARTS LIST (FIGURE A)

KEY NO.	PART NUMBER	DESCRIPTION	QTY	KEY NO.	PART NUMBER	DESCRIPTION	QTY
1	6446902	GEAR BOX HOUSING .....	1	21	6886301	SPRING WASHER .....	4
2	7423201	MOTOR .....	1	22	680864001	FLAT WASHER .....	4
3	6886701	SPRING .....	1	23	080001012002	“D” HANDLE - HOUSING ASSEMBLY (INC. KEY NOS. 25 AND 26).....	1
4	6381302	BLADE RELEASE PLATE.....	1	24	3071801	WORK CLAMP ASSEMBLY.....	1
5	6617503	* SCREW (M3 X 16 mm) .....	2	25	940006108	“D” HANDLE WARNING LABEL.....	1
6	550308002	BLADE RELEASE KNOB .....	1	26	940009102	“D” HANDLE DATA LABEL .....	1
7	6886501	FLAT WASHER .....	4	27	680874002	HEX KEY (5 mm).....	1
8	6886601	SPRING WASHER.....	4	28	6887302	HEX KEY (6 mm).....	1
9	6621211	* SCREW (M4 X 12 mm) .....	4	29	630812001	BLADE WRENCH .....	1
10	550301003	TRIGGER KNOB.....	1	30	550237001	DUST GUIDE .....	1
11	550377003	UPPER SAFETY KNOB .....	1	31	300027027	DUST BAG .....	1
12	550378003	LOWER SAFETY KNOB .....	1	32	6616501	* SCREW (M4 X 14 mm) .....	2
13	270011083	SWITCH ASSEMBLY .....	1	33	6391501	METAL CLIP .....	1
14	660203020	* SCREW (M3 X 10 mm) .....	1	34	080001012007	RESISTOR W/LEADS ASSEMBLY .....	1
15	6886801	SPRING .....	1	35	6621114	* SCREW (M3 X 8 mm) .....	2
16	080001012003	LOWER CARRYING HANDLE ASSEMBLY (INC. KEY NO. 17) .....	1	36	6993301	SUPPORT BLOCK.....	1
17	6620805	* SCREW (M4 X 16 mm) .....	10	37	940304175	LOGO LABEL ON D-HANDLE (NOT SHOWN) .	1
18	6886901	PIN.....	1	38	940006109	FRENCH WARNING LABEL ON D-HANDLE (NOT SHOWN).....	1
19	7902101	CONNECTOR.....	1	39	940080005	SPANISH WARNING HANG TAG (NOT SHOWN).....	1
20	660219006	* SCREW (M5 X 66 mm) .....	4				

\* STANDARD HARDWARE ITEM – MAY BE PURCHASED LOCALLY

RYOBI 18 VOLT CORDLESS COMPOUND MITER SAW - MODEL NUMBER P550

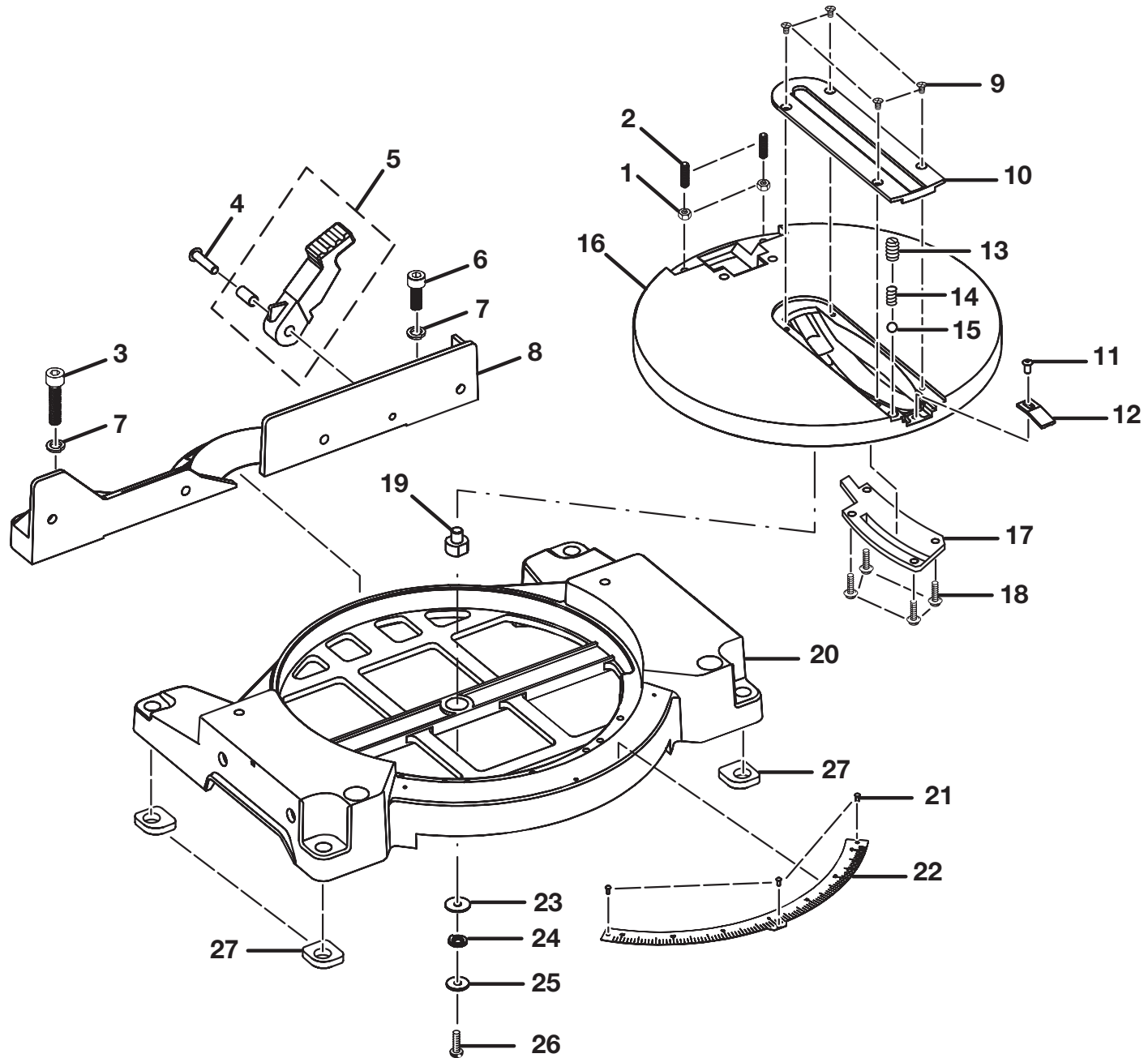


Figure B

## RYOBI 18 VOLT CORDLESS COMPOUND MITER SAW – MODEL NUMBER P550

The model number will be found on a plate attached to the motor housing. Always mention the model number in all correspondence regarding your **COMPOUND MITER SAW** or when ordering repair parts.

### PARTS LIST (FIGURE B)

KEY NO.	PART NUMBER	DESCRIPTION	QTY
1	680751001	* HEX NUT (M6 X 4.5 mm) .....	2
2	6616916	* SCREW (M6 X 20 mm HEX HD.).....	2
3	6616922	* SCREW (M8 X 35 mm HEX HD.).....	1
4	6616914	* SCREW (M6 X 25 mm BUTTON HD.).....	1
5	3823402	MITER TABLE CLAMP ASSEMBLY .....	1
6	660169013	* SCREW (M8 X 20 mm HEX HD.).....	1
7	680754001	SPRING WASHER (M8) .....	2
8	640471003	FENCE .....	1
9	660213005	* SCREW (M4 X 8 mm).....	4
10	550236004	THROAT PLATE .....	1
11	660169015	* SCREW (M4 X 8 mm HEX HD.).....	1
12	550239001	MITER SCALE INDICATOR.....	1
13	5537201	* SCREW (M10 X 12.7 mm).....	1
14	6881501	COMPRESSION SPRING .....	1
15	6881601	* STEEL BALL (Ø6 mm).....	1
16	640473002	TABLE .....	1
17	6384001	LOWER BLADE GUARD .....	1
18	660176002	* SCREW (M4 X 9 mm).....	4
19	680870002	* NUT (SPECIAL) (M8 X 1.25 X 19.5 mm).....	1
20	640474003	TABLE FRAME .....	1
21	680763001	RIVET .....	3
22	630788002	MITER SCALE.....	1
23	680753001	FLAT WASHER.....	1
24	680762001	SPRING WASHER (M5) .....	1
25	680752001	FLAT WASHER.....	1
26	660219007	* SCREW (M5 X 15 mm PAN HD.).....	1
27	5530301	RUBBER STAND.....	4

\* STANDARD HARDWARE ITEM – MAY BE PURCHASED LOCALLY

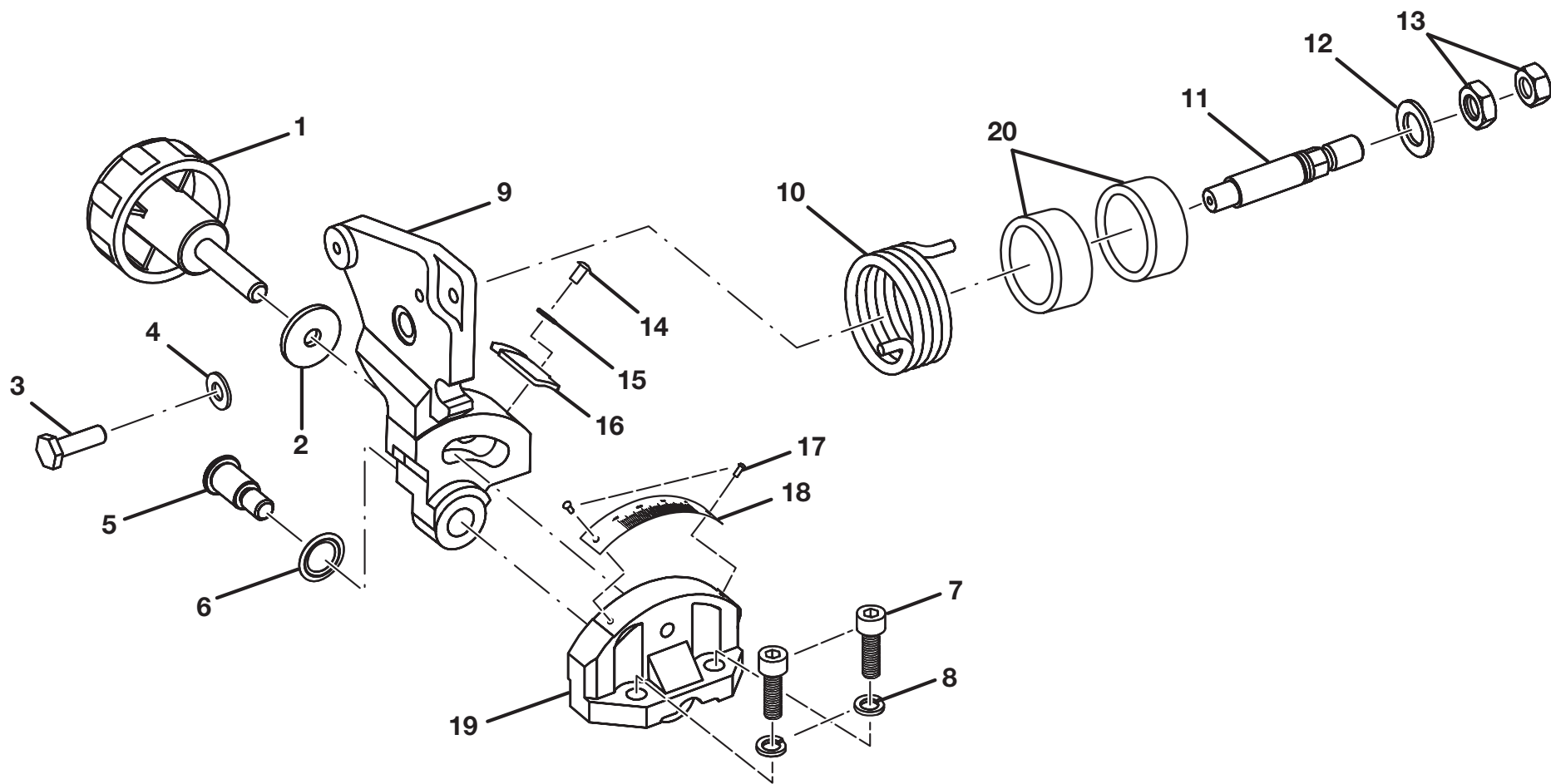


Figure C

## RYOBI 18 VOLT CORDLESS COMPOUND MITER SAW – MODEL NUMBER P550

The model number will be found on a plate attached to the motor housing. Always mention the model number in all correspondence regarding your **COMPOUND MITER SAW** or when ordering repair parts.

### PARTS LIST (FIGURE C)

KEY NO.	PART NUMBER	DESCRIPTION	QTY
1	550238001	BEVEL LOCK KNOB .....	1
2	680758001	FLAT WASHER .....	1
3	660169018	* SCREW (M10 X 20 mm HEX HD.) .....	1
4	680757001	SPRING WASHER .....	1
5	620145001	PIVOT SHAFT .....	1
6	680756001	WASHER .....	1
7	660169019	* SCREW (M8 X 25 mm HEX HD.) .....	2
8	680754001	SPRING WASHER (M8) .....	2
9	640557001	SUPPORT BRACKET .....	1
10	680743001	TENSION SPRING .....	1
11	620219001	SHAFT .....	1
12	6881701	FLAT WASHER .....	1
13	6881801	* HEX NUT (M12) .....	2
14	660212012	* SCREW (M4 X 10 mm) .....	1
15	6875901	FLAT WASHER .....	1
16	550240001	BEVEL SCALE INDICATOR .....	1
17	680763001	RIVET .....	2
18	630787002	BEVEL SCALE .....	1
19	640466001	PIVOT SUPPORT .....	1
20	560715002	SLEEVE .....	2

\* STANDARD HARDWARE ITEM – MAY BE PURCHASED LOCALLY

RYOBI 18 VOLT CORDLESS COMPOUND MITER SAW – MODEL NUMBER P550

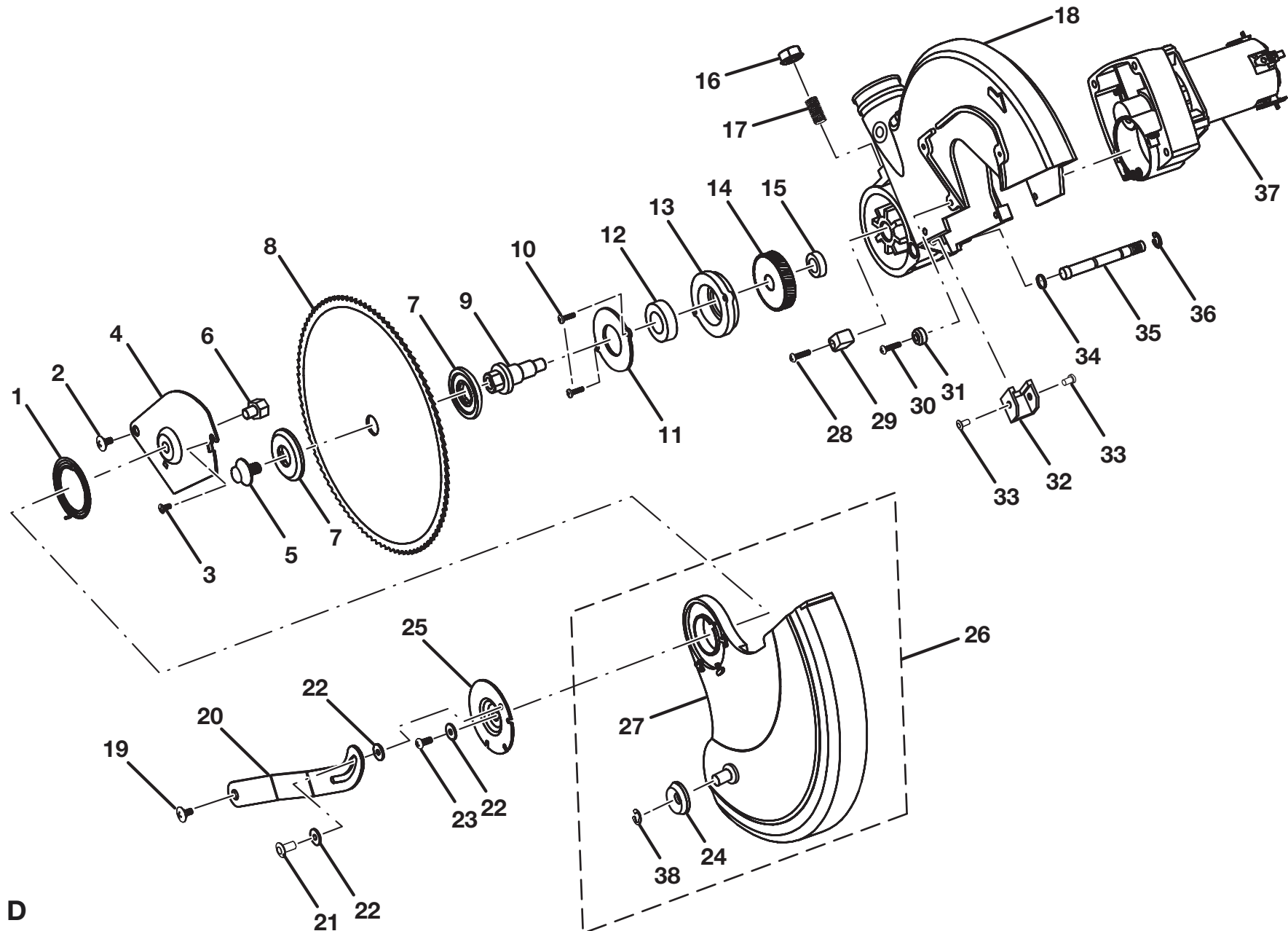


Figure D

## RYOBI 18 VOLT CORDLESS COMPOUND MITER SAW – MODEL NUMBER P550

The model number will be found on a plate attached to the motor housing. Always mention the model number in all correspondence regarding your **COMPOUND MITER SAW** or when ordering repair parts.

### PARTS LIST (FIGURE D)

KEY NO.	PART NUMBER	DESCRIPTION	QTY	KEY NO.	PART NUMBER	DESCRIPTION	QTY
1	680740001	RETRACT SPRING .....	1	27	550235004	LOWER BLADE GUARD.....	1
2	660175002	* SCREW (M5 X 9 mm) .....	1	28	6621213	* SCREW (M4 X 14.5 mm PAN HD.) .....	1
3	660176001	* SCREW (M4 X 4.5 mm) .....	1	29	560633002	UPPER GUARD STOPPER.....	1
4	630789003	PIVOT PLATE.....	1	30	660219007	* SCREW (M5 X 15 mm) .....	1
5	660169017	* SCREW (M8 X 13.5 mm HEX HD.) .....	1	31	560622001	STOPPER .....	1
6	680765003	LOCK NUT (M5 X 7.5 mm) .....	1	32	550326002	DEFLECTOR.....	1
7	6446702	BLADE WASHER .....	2	33	660082001	* TAPPING SCREW (M3 X 6 mm) .....	2
8	6944702	SAW BLADE .....	1	34	560693002	“O” RING .....	1
9	6214401	OUTPUT SHAFT.....	1	35	6214901	STOPPER PIN .....	1
10	6621204	* SCREW (M4 X 16 mm PAN HD.) .....	2	36	6881401	“E” RING (E6) .....	1
11	6379001	BEARING PLATE .....	1	37	210010072	GEAR BOX WITH MOTOR ASSEMBLY.....	1
12	6874101	BALL BEARING .....	1	38	6889201	“E” RING.....	1
13	6446801	SPINDLE BEARING CASE .....	1	39	940304174	LOGO LABEL ON UPPER GUARD (NOT SHOWN).....	1
14	6123701	TRANMISSION GEAR .....	1	40	940299950	DANGER LABEL ON UPPER GUARD (NOT SHOWN).....	1
15	6874201	BALL BEARING .....	1	41	940292100	BLADE CHANGE LABEL ON UPPER GUARD (NOT SHOWN).....	1
16	6881901	* HEX NUT (M10 X 8 mm) .....	1	42	940258102	RESTORE LOWER BLADE LABEL ON BLADE GUARD BRACKET PLATE (NOT SHOWN).....	1
17	6617002	* SCREW (M10 X 20 mm HEX HD.) .....	1	43	940258100	HAND OFF LABEL ON BOTTOM PLATE (NOT SHOWN).....	2
18	6447203	UPPER BLADE GUARD .....	1	44	940275018	HAND OFF LABEL ON LOWER GUARD (NOT SHOWN).....	1
19	660175001	* SCREW (M6 X 10 mm) .....	1		983000656	OPERATOR’S MANUAL (960223630)	
20	690554001	BLADE GUARD BRACKET ARM .....	1		983000656R	REPAIR SHEET (REV:02)	
21	680764001	RIVET.....	1		03-10-06		
22	680761001	FLAT WASHER .....	3				
23	660219001	* SCREW (M5 X 10 mm) .....	1				
24	550414001	GUARD ROLLER .....	1				
25	630791003	BLADE GUARD BRACKET PLATE .....	1				
26	300516014	LOWER BLADE GUARD ASSEMBLY (INC. KEY NOS. 24, 27 AND 38).....	1				

\* STANDARD HARDWARE ITEM – MAY BE PURCHASED LOCALLY