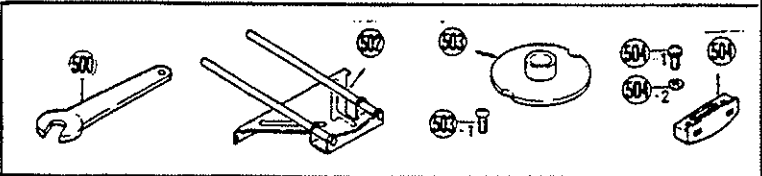
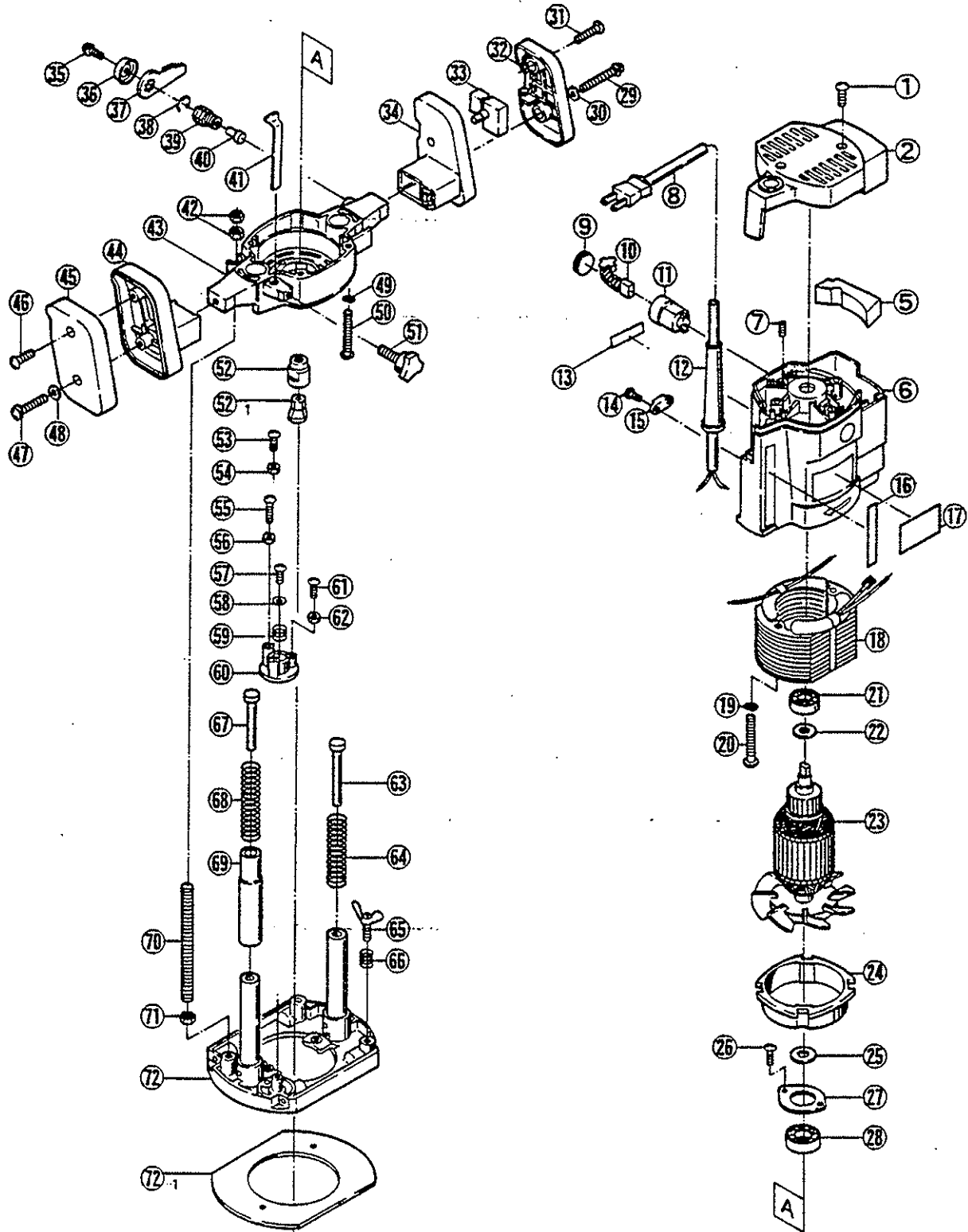


ROUTER

R-151



PARTS LIST FOR AFTER SALES SERVICE MODEL R151

	PART NO.	DESCRIPTION	QTY	REF	PART NO.	DESCRIPTION	QTY
	9060425	TAPPING SCREW (B) M4X25	2	52	6940134	COLLET CHUCK	1
2	6800382	TAIL COVER	1	52-1	6940132	COLLET SLEEVE	1
5	6370050	DUST SPONGE	1	53	9000530	PHILLIPS PAN SCREW M5X30	1
6	6800378	MOTOR HOUSING	1	54	9310500	HEX NUT M5	1
7	9280506	CLAMP SCREW M5X6	2	55	9000520	PHILLIPS PAN SCREW M5X30	1
8	6520331	CORD ASS'Y AWG#18X2X2	1	56	9310500	HEX NUT M5	1
9	6570070	BRUSH CAP	2	57	9040410	TAPPING SCREW (S) M4X10	1
10	6540853	CARBON BRUSH SET	1	58	6900186	WASHER	1
11	6570077	BRUSH HOLDER	2	59	6180064	COMPRESSION SPRING	1
12	6560044	CORD HOLDER	1	60	6320056	STOP BLOCK	1
13	6920214	"RYOBI" MARK	1	61	9000512	PHILLIPS PAN SCREW M5X12	1
14	9060414	TAPPING SCREW (B) M4X14	2	62	9310500	HEX NUT M5	1
15	6560055	CORD CLAMP	1	63	6100061	AUX. GUIDE BAR	1
16	6920209	SCALE "INCH"	1	64	6180063	COMPRESSION SPRING	1
17	6910673	NAME PLATE	1	65	6130395	WING BOLT M6X15	2
18	6500393	FIELD COIL	1	66	6180004	COMPRESSION SPRING	2
19	9550500	SPRING WASHER M5	2	67	6100061	AUX. GUIDE BAR	1
20	9060555	TAPPING SCREW (B) M5X55	2	68	6180063	COMPRESSION SPRING	1
21	622274001	BALL BEARING #608LLB	1	69	6760034	BUSHING	1
22	6900190	WASHER	1	70	6130290	BOLT M8X125	1
23	6030421	ARMATURE	1	71	9300800	HEX NUT M8	1
24	6360061	COVER	1	72	6010052	BASE	1
25	6900192	WASHER	1	72-1	6360056	BASE PLATE	1
27	9040410	TAPPING SCREW (S) M4X10	2	—	6560002	CONNECTOR	2
2	6150635	BEARING CLAMP	1	—	9674318	LEAD WIRE	1
28	969235005	BALL BEARING #6200LLB	1				
29	9020530	PHILLIPS PAN SCREW M5X30	1				
30	9570500	WASHER	1	500	6240123	SINGLE-END WRENCH 13	1
31	9060512	TAPPING SCREW (B) M5X12	1	—	6240533	SINGLE-END WRENCH 17	1
32	6830351	HANDLE COVER	1	502	6090080	STRAIGHT GUIDE	1
33	6550156	TRIGGER SWITCH	1	503	6072313	TEMPLATE GUIDE	1
34	6830348	HANDLE (R)	1	503-1	9120508	TRUSS HEAD SCREW M5X8	2
35	9020610	PHILLIPS PAN SCREW M6X10	1	504	6070613	CIRCULAR GUIDE	2
36	6900167	WASHER	1	504-1	9020514	PHILLIPS PAN SCREW M5X14	2
37	6830339	CLAMP LEVER	1	504-2	9570500	WASHER	2
38	9501000	RETAINING RING E-10	1				
39	6130288	CLAMP SCREW	1				
40	6120072	DRIVE PIN	1				
41	6150462	STOP POLE	1				
42	9300800	HEX NUT M8	2				
43	6320055	BRACKET	1				
44	6830353	HANDLE (L)	1				
45	6830356	HANDLE COVER (L)	1				
46	9060512	TAPPING SCREW (B) M5X12	1				
47	9020530	PHILLIPS PAN SCREW M5X30	1				
48	9570500	WASHER	1				
49	9550500	SPRING WASHER M5	4				
50	9060545	TAPPING SCREW (B) M5X45	4				
51	6130282	KNOB BOLT M5X15	1				

STANDARD ACCESSORIES

SERVICE NOTES:

