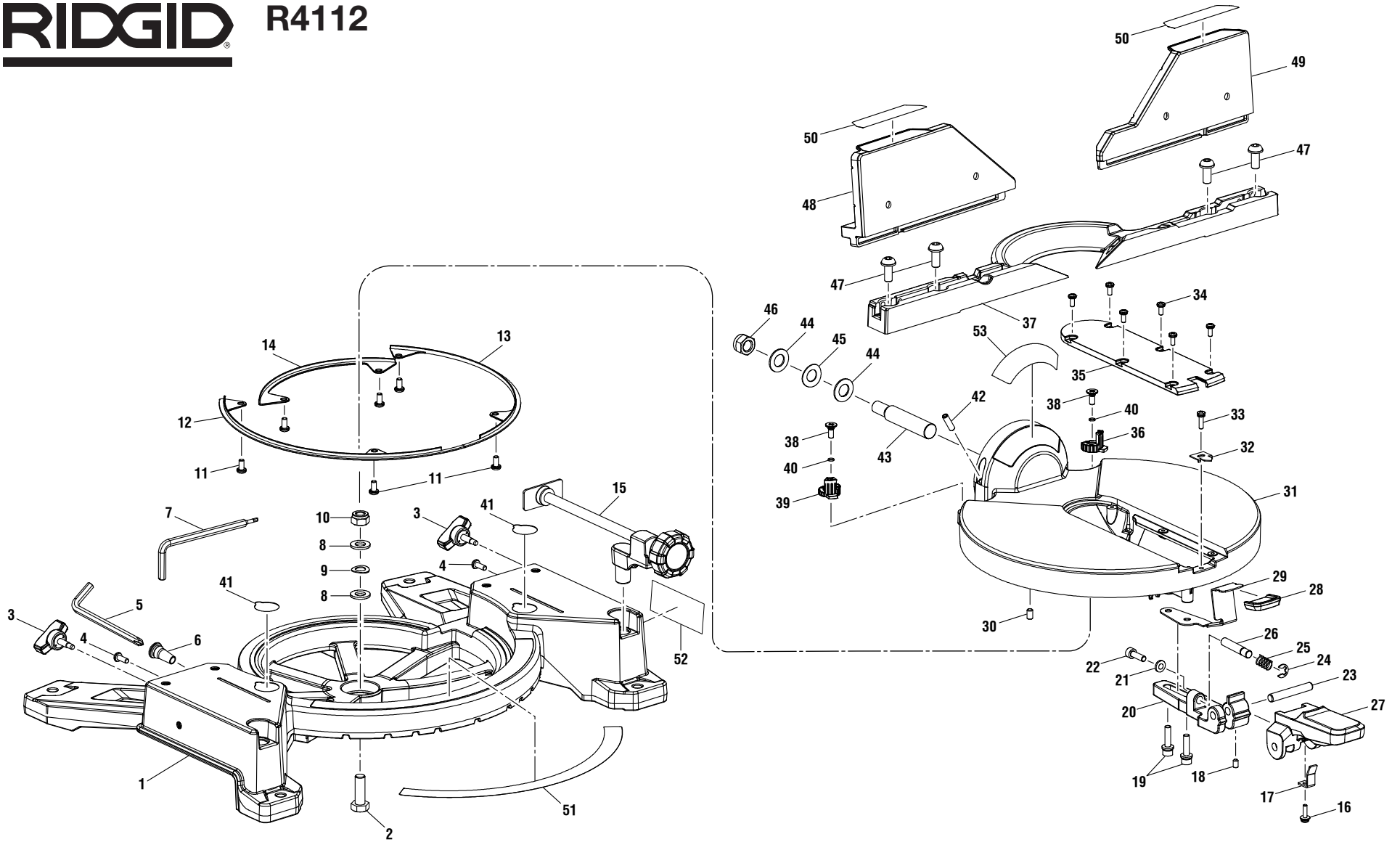


**RIDGID**  
**10 in. Miter Saw**  
**Model No. R4112**  
**Repair Sheet**

**RIDGID**  
**Scie à onglets de 10 po**  
**No. de modèle R4112**  
**Feuille de réparation**

**RIDGID**  
**Sierra ingleteadora de 10 pulg.**  
**Núm. de modelo R4112**  
**Lista de piezas de repuesto**



The model number will be found on a label attached to the motor housing. Always mention the model number in all correspondence regarding your **MITER SAW** or when ordering repair parts.

Le numéro de modèle se trouve sur une étiquette fixée sur le boîtier du moteur. Ne jamais oublier de mentionner le numéro de modèle dans toute correspondance concernant la **SCIE À ONGLETS** ou lors de la commande de pièces détachées.

El número de modelo se encuentra en una etiqueta adherida a la caja del motor. Siempre mencione el número del modelo en toda la correspondencia relacionada con la **SIERRA INGLETEADORA** o al pedir piezas para repararla.

**FIGURE A**  
**FIGURA A**



R4112

PARTS LIST FOR FIGURE A

KEY NO.	PART NUMBER	DESCRIPTION	QTY	KEY NO.	PART NUMBER	DESCRIPTION	QTY
1	089036008711	Base (Inc. Key No. 41).....	1	30	089036008128	Screw (M6 x 10 mm, Hex Soc. Hd.).....	1
2	089036008016	Bolt (M10 x 30 mm, Hex Hd.) .....	1	31	089036008105	Table .....	1
3	089036008142	Fence Knob .....	2	32	089036008109	Miter Pointer.....	1
4	089036008126	Screw (M5 x 12 mm, Pan Hd.) .....	1	33	089036008071	Screw w/Washer (M4 x 15 mm) .....	1
5	089036008028	Blade Wrench.....	1	34	089036008089	Screw (M4 x 10 mm, Pan Hd.) .....	6
6	089036008111	Grommet .....	1	35	089036008155	Throat Plate .....	1
7	089036008925	Hex Key (3 mm and 5 mm).....	1	36	089036008108	Bevel Stop Turret (Right) .....	1
8	089036008022	Washer (M10) .....	2	37	089036008139	Fence.....	1
9	089036008025	Washer (M10) .....	1	38	089036008123	Screw (M5 x 14 mm) .....	2
10	089036008026	Hex Nut (M10) .....	1	39	089036008107	Bevel Stop Turret (Left).....	1
11	089036008125	Screw (M5 x 10 mm, Pan Hd.) .....	6	40	089036008122	O-Ring .....	2
12	089036008118	Left Shim .....	1	41	089036005907	Hand Warning Label.....	2
13	089036008119	Right Shim.....	1	42	089036008017	Screw (M6 x 20 mm, Hex Soc. Hd.).....	1
14	089036008120	Middle Shim .....	1	43	089036008003	Pivot Shaft.....	1
15	089036008926	Workpiece Clamp .....	1	44	089036008134	Washer (M12) .....	2
16	089036008071	Screw w/Washer (M4 x 15 mm) .....	1	45	089036008135	Washer (M12) .....	1
17	089036008110	Spring Plate.....	1	46	089036008136	Hex Nut (M12) .....	1
18	089036008041	Screw (M5 x 8 mm, Hex Soc. Hd.).....	1	47	089036008143	Cap Screw (M8 x 20 mm, Hex Hd.).....	4
19	089036008131	Cap Screw (M6 x 25 mm, Hex Hd.).....	2	48	089036008709	Left Sliding Fence (Inc. Key No. 50) .....	1
20	089036008106	Lock Bracket .....	1	49	089036008710	Right Sliding Fence (Inc. Key No. 50).....	1
21	089036008133	Washer (M6) .....	1	50	089036008907	Slide Miter Fence Warning Label .....	2
22	089036008130	Cap Screw (M6 x 18 mm, Hex Hd.).....	1	51	089036008908	Miter Scale Label.....	1
23	089036008114	Miter Handle Shaft .....	1	52	089036008913	Crown Molding Label .....	1
24	089036008137	E-Ring.....	1	53	089036008905	Bevel Scale Label.....	1
25	089036008115	Compression Spring.....	1	<b>NOT SHOWN:</b>			
26	089036008113	Miter Lock Pin .....	1	990000910	Operator's Manual		
27	089036008116	Miter Lock Handle .....	1	(Rev:04)			
28	089036008121	Detent Release Button .....	1	3-17-16			
29	089036008112	Lock Plate.....	1				

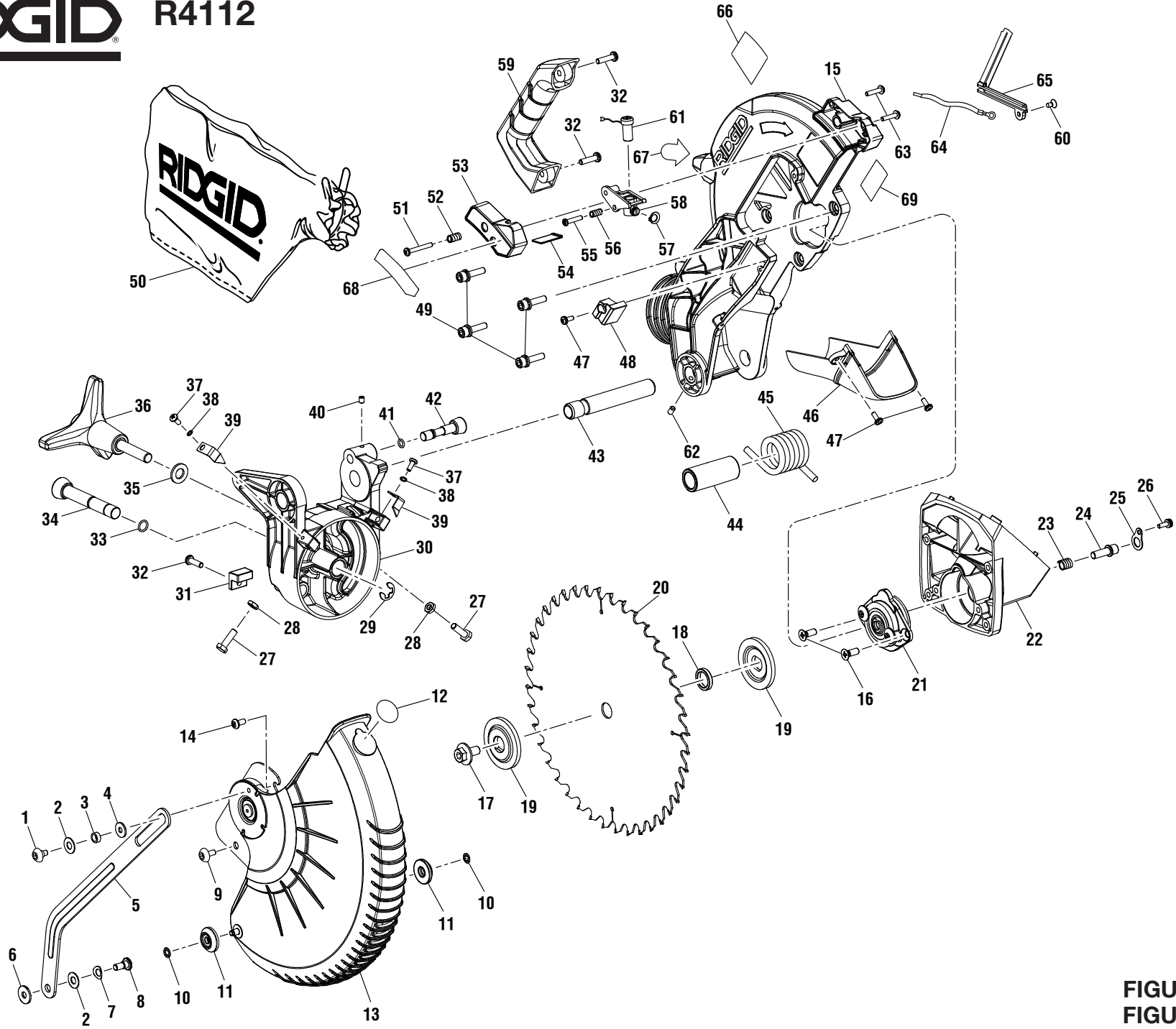


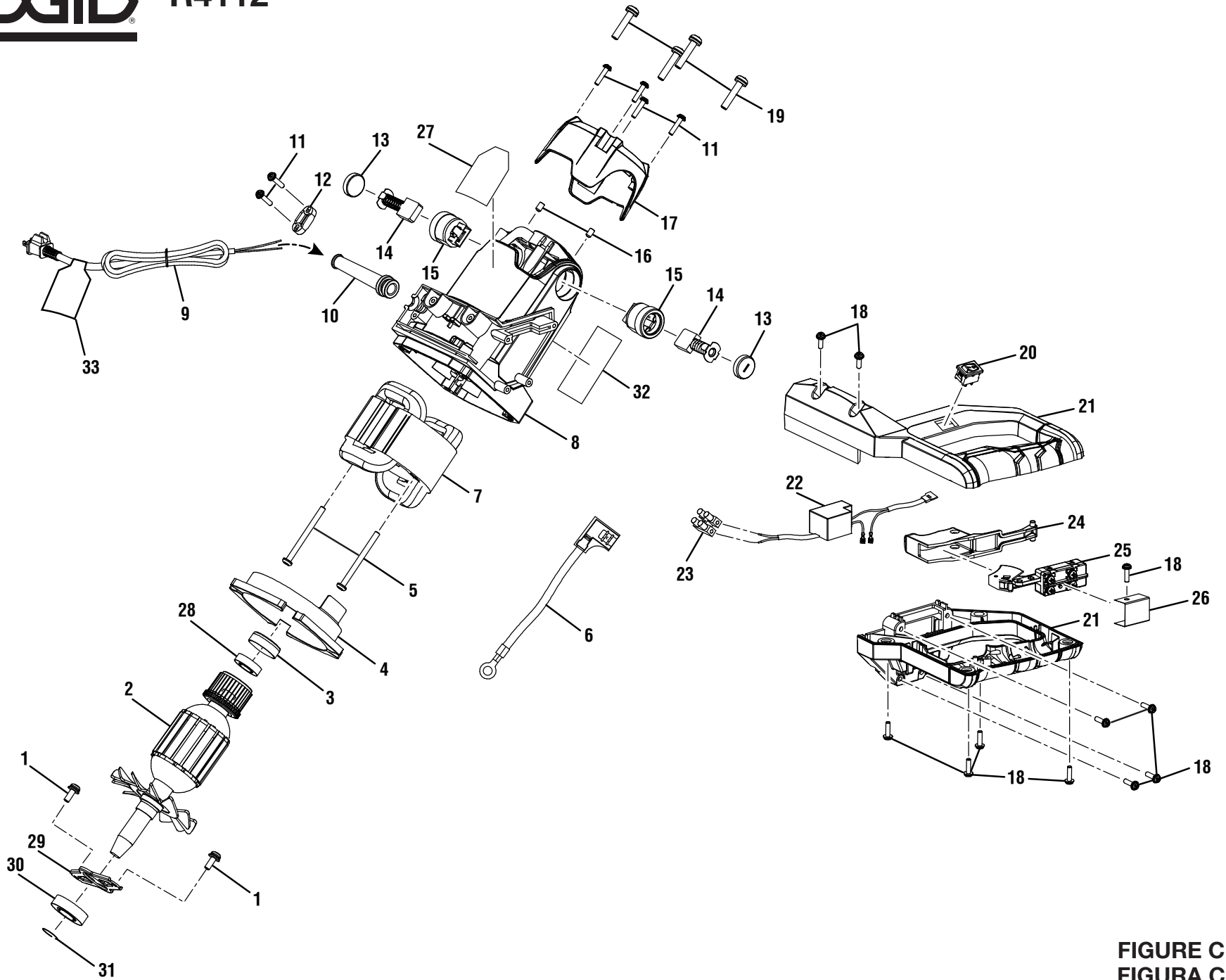
FIGURE B  
FIGURA B



R4112

PARTS LIST FOR FIGURE B

KEY NO.	PART NUMBER	DESCRIPTION	QTY	KEY NO.	PART NUMBER	DESCRIPTION	QTY
1	089036008014	Screw (M5 x 10 mm)	1	35	089036008022	Washer (M10)	1
2	089036008021	Washer (M7)	2	36	089036008012	Bevel Lock Handle	1
3	089036008010	Spacer	1	37	089036008144	Screw (M4 x 10 mm, Pan Hd.)	2
4	089036008019	Washer (M5)	1	38	089036008132	Washer (ID4 x OD7 x 1t)	2
5	089036008002	Actuator Link	1	39	089036008098	Bevel Indicator	2
6	089036008020	Washer	1	40	089036008097	Screw (M5 x 6 mm, Hex Soc. Hd.)	1
7	089036008024	Wavy Washer	1	41	089036008095	O-Ring	1
8	089036008045	Screw (M5)	1	42	089036008096	Lock Pin	1
9	089036008013	Screw (M5)	1	43	089036008004	Upper Pivot Shaft	1
10	089036008146	Push Nut	2	44	089036008009	Sleeve	1
11	089036008150	Roller	2	45	089036008007	Torsion Spring	1
12	089036005907	No Hands Warning Label	1	46	089036008084	Dust Chute	1
13	089036008708	Lower Blade Guard Assembly (Inc. Key Nos. 10-12)	1	47	089036008089	Screw (M4 x 10 mm, Pan Hd.)	3
14	089036008125	Screw (M5 x 10 mm, Pan Hd.)	1	48	089036008083	Stop Block	1
15	089036008075	Upper Blade Guard Assembly	1	49	089036008091	Screw (M6 x 23 mm, Hex Hd.)	4
16	089036008072	Screw (M6 x 12 mm, Pan Hd.)	2	50	089036008914	Dust Bag Assembly	1
17	089036008018	Blade Bolt (M8 x 16 mm, Hex Flange Hd.)	1	51	089036008088	Screw (M4 x 30 mm, Pan Hd.)	1
18	089036008005	Spacer (ID16 x OD22 x 4.2t)	1	52	089036008077	Compression Spring	1
19	089036008006	Blade Washer	2	53	089036008080	Laser Cover	1
20	089036008911	Blade (10 in.)	1	54	089036008082	Laser Lens	1
21	089036008714	Arbor Shaft Assembly	1	55	089036008085	Screw (M4 x 20 mm)	1
22	089036008061	Gearbox	1	56	089036008076	Compression Spring	1
23	089036008067	Compression Spring	1	57	089036008092	Steel Ring	1
24	089036008065	Lock Pin	1	58	089036008081	Laser Base	1
25	089036008063	Spindle Lock Button	1	59	089036008078	Carry Handle	1
26	089036008071	Screw w/Washer (M4 x 15 mm)	1	60	089036008156	Screw (M4 x 10 mm)	1
27	089036008101	Bolt (M6 x 20 mm, Hex Hd.)	2	61	089036008093	Laser Assembly	1
28	089036008103	Hex Nut (M6)	2	62	089036008041	Screw (M5 x 8 mm, Hex Soc. Hd.)	1
29	089036008104	E-Ring	1	63	089036008037	Screw w/Washer (M4 x 18 mm)	2
30	089036008094	Pivot Bracket	1	64	089036008043	Lead w/Terminal	1
31	089036008079	Pivot Block	1	65	089036008011	Laser Cable Cover	1
32	089036008087	Screw (M5 x 14 mm, Pan Hd.)	3	66	089036008910	Blade Guard Warning Label	1
33	089036008100	O-Ring	1	67	089036008909	Arbor Screw Direction Label	1
34	089036008102	Pivot Bolt	1	68	089036008912	Laser Instruction Label	1
				69	089036008904	Aperture Warning Label	1



**FIGURE C**  
**FIGURA C**



R4112

PARTS LIST FOR FIGURE C

KEY NO.	PART NUMBER	DESCRIPTION	QTY	KEY NO.	PART NUMBER	DESCRIPTION	QTY
1	089036008058	Screw (M5 x 15 mm, Pan Hd.)	2	17	089036008031	End Cap	1
2	089036008702	Armature Assembly (Inc. Key Nos. 3 and 28-31)	1	18	089036008038	Screw w/Washer (M4 x 14 mm)	11
3	089036008055	Bearing Seat	1	19	089036008040	Screw (M6 x 30 mm, Pan Hd.)	4
4	089036008034	Baffle	1	20	089036008046	Laser Switch	1
5	089036008036	Screw (M5 x 60 mm)	2	21	089036008715	Handle Assembly	1
6	089036008044	Motor Lead w/Terminals	1	22	089036008042	Transformer Assembly	1
7	089036008047	Field	1	23	089036008053	Terminal Block	1
8	089036008712	Motor Housing Assembly (Inc. Key Nos. 27 and 32)	1	24	089036008035	Trigger	1
9	089036008048	Power Cord	1	25	089036008045	Switch	1
10	089036008008	Bend Relief	1	26	089036008157	Barrier (Insulator)	1
11	089036008037	Screw w/Washer (M4 x 18 mm)	6	27	089036008901	Warning Label	1
12	089036008052	Cord Clamp	1	28	089036008057	Ball Bearing (6000-2RS)	1
13	089036008051	Brush Cap	2	29	089036008054	Bearing Clamp	1
14	089036008049	Brush Assembly	2	30	089036008056	Ball Bearing (6003-2RT)	1
15	089036008050	Brush Holder	2	31	089036008059	Retaining Ring	1
16	089036008041	Screw (M5 x 8 mm, Hex Soc. Hd.)	2	32	089036008902	Data Label	1
				33	089036008903	Hang Tag (French/Spanish)	1