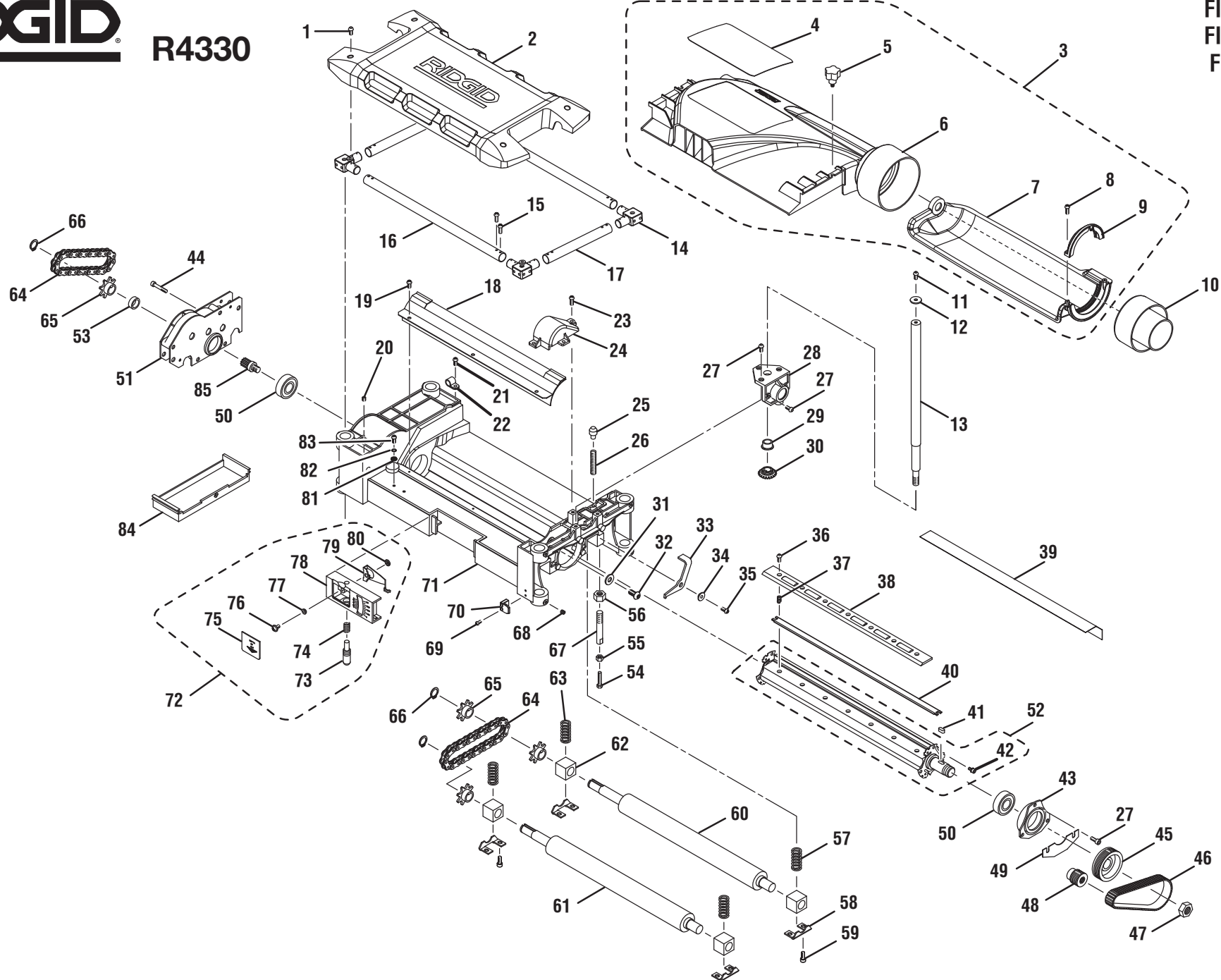


RIDGID

R4330

FIGURE A /
FIGURE A /
FIGURA A



PARTS LIST FOR FIGURE A

KEY P/N	DESCRIPTION	QTY	KEY P/N	DESCRIPTION	QTY	KEY P/N	DESCRIPTION	QTY
1 089170105012	SCREW (HEX SOC BUTTON HD.).....	4	28 089170105036	HAND WHEEL BRACKET	1	57 827755	RIGHT SPRING	2
2 089170105011	TOP COVER	1	29 089170105025	BUSHING	1	58 089170101080	PLATE RETAINER.....	4
3 089170105802	DUST HOOD ASSEMBLY (INCL. KEY NOS. 4-9)	1	30 089170105024	BEVEL GEAR.....	1	59 820379-9	SCREW W/WASHER (M5 x 10 mm)	8
4 089170105206	DUST HOOD WARNING LABEL ...	1	31 821063	WASHER (8 x 18 x 2t)	1	60 828938	OUTFEED ROLLER	1
5 089170105103	DUST HOOD KNOB	2	32 089170101058	SCREW (M8 x 20 mm, HEX HD.) ..	1	61 828939	INFEED ROLLER	1
6 089170105043	DUST HOOD	1	33 089170101054	CUTTERHEAD LOCK	1	62 089170101081	BEARING BLOCK	4
7 089170105044	DUST HOOD DOOR.....	1	34 827737	CUTTER LOCK SPACER.....	1	63 827758	LEFT SPRING.....	2
8 089170105022	SCREW (M3 x 16 mm, PAN HD.) ..	2	35 089170105051	SCREW (M5 x 16 mm, HEX SOC. HD.).....	1	64 827794	CHAIN	2
9 089170105045	DIRECTIONAL HALF RING	1	36 089170105007	SCREW (HEX SOC. BUTTON HD.).....	21	65 827772	SPROCKET	4
10 089170105046	DUST VACUUM ADAPTOR.....	1	37 089170105006	BLADE SPRING	6	66 817453-4	EXTERNAL RETAINING RING	3
11 089170105047	SCREW (M6 x 12 mm, HEX SOC. HD.).....	1	38 089170105107	BLADE LOCK BAR (Set of 3)	1	67 089170105055	THICKNESS ADJUST ROD.....	1
12 089170105048	WASHER (6.5 mm x 20 x 2t)	1	39 089170105210	CUTTERHEAD WARNING CARD (TRILINGUAL).....	1	68 089170105056	SET SCREW (M5 x 6 mm, NYLOCK SOC. HD.).....	8
13 089170105049	TRANSMISSION SHAFT	1	40 089170105052	PLANER BLADE.....	3	69 089170105057	SCREW (M3 x 22 mm, PAN HD.) ..	2
14 089170105026	UPPER BEARING SEAT	4	41 818654-9	KEY	1	70 089170105032	HEIGHT SCALE INDICATOR.....	1
15 089170105079	SCREW (M4 x 8 mm, NYLOCK HEX SOC. BUTTON HD.).....	16	42 828948	SCREW W/WASHER (M4 x 8 mm)	6	71 089170105017	UPPER FRAME	1
16 089170105041	LONG CONNECTION TUBE	2	43 827786	BEARING RETAINER.....	1	72 089170105804	IND-I-CUT DEPTH™ INDICATOR ASSEMBLY (INCL. KEY NOS. 73-80)	1
17 089170105040	SHORT CONNECTION TUBE	2	44 828943-4	SCREW W/LOCK WASHER (M5 x 35 mm)	4	73 089170105059	POINTER ELEVATING ROD.....	1
18 089170105050	CHIP DEFLECTOR	1	45 089170105085	CUTTERHEAD PULLEY	1	74 827734	SPRING (8.5 x 19 x 0.8)	1
19 089170101014	SCREW (M5 x 8 mm, PAN HD.)	3	46 827793	DRIVE BELT.....	1	75 827746	POINTER COVER	1
20 821065-2	SET SCREW (M5 x 8 mm, HEX HD.)	1	47 827788	HEX NUT (M16, L.H.)	1	76 089170105084	SCREW W/WASHER (M4 x 10 mm, NYLOCK PAN HD.) ..	1
21 089170101016	SCREW W/WASHER (M5 x 10 mm)	1	48 827789	MOTOR PULLEY	1	77 827763	BUSHING (4.2 x 11 x 3)	1
22 827767	CORD CLAMP.....	1	49 089170105014	BELT DUST SHIELD PLATE	1	78 827701	POINTER HOUSING	1
23 828944-1	SCREW W/WASHER (M4 x 10 mm)	3	50 820722-5	BALL BEARING (6203zz)	2	79 827732	POINTER	1
24 089170105030	BELT GUARD	1	51 089170105803	GEAR BOX ASSEMBLY	1	80 827762	HEX NUT (M4 x 0.75)	1
25 828788	PLUNGER	1	52 089170105701	CUTTERHEAD ASSEMBLY	1	81 813314-8	EXTERNAL LOCK WASHER (M5)..	2
26 827738	PLUNGER ASSEMBLY.....	1	53 827773	SPACER (15 x 20 x 7t).....	1	82 089170101119	SPRING WASHER.....	2
27 089170105058	SCREW (M5 x 12 mm, HEX SOC. BUTTON HD.).....	16	54 821151-4	SCREW (M5 x 25 mm, HEX HD.) ..	1	83 820257-1	SCREW W/WASHER, (M5 x 8 mm PAN HD.)	2
			55 813164-6	HEX NUT (M5)	1	84 089170101038	GEAR BOX COVER.....	1
			56 827817	HEX NUT (M10, SPECIAL)	1	85 827784	GEAR PINION	1

RIDGID® R4330

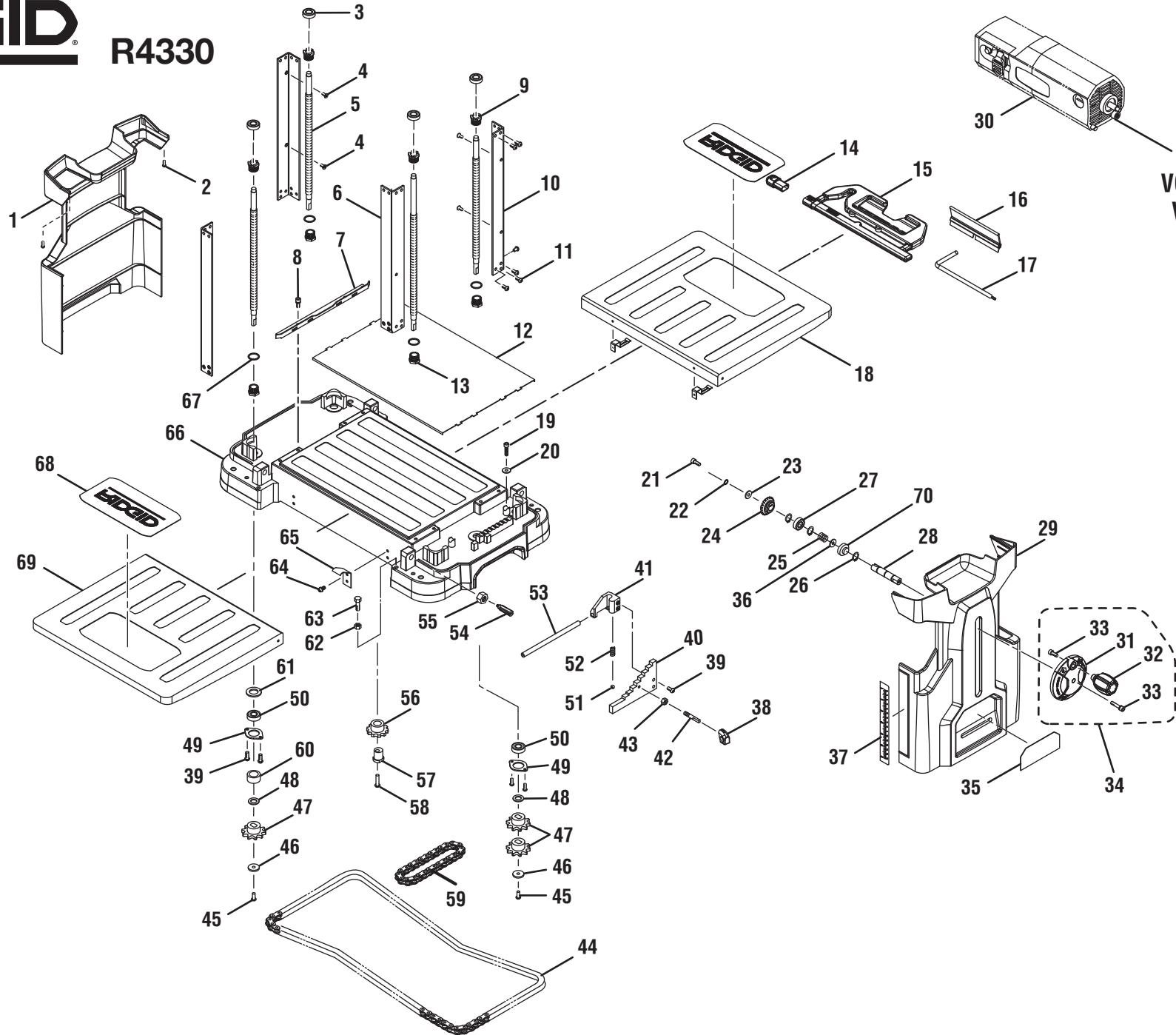


FIGURE B /
FIGURE B /
FIGURA B

SEE FIGURE C /
VOIR LA FIGURE C /
VEA LA FIGURA C

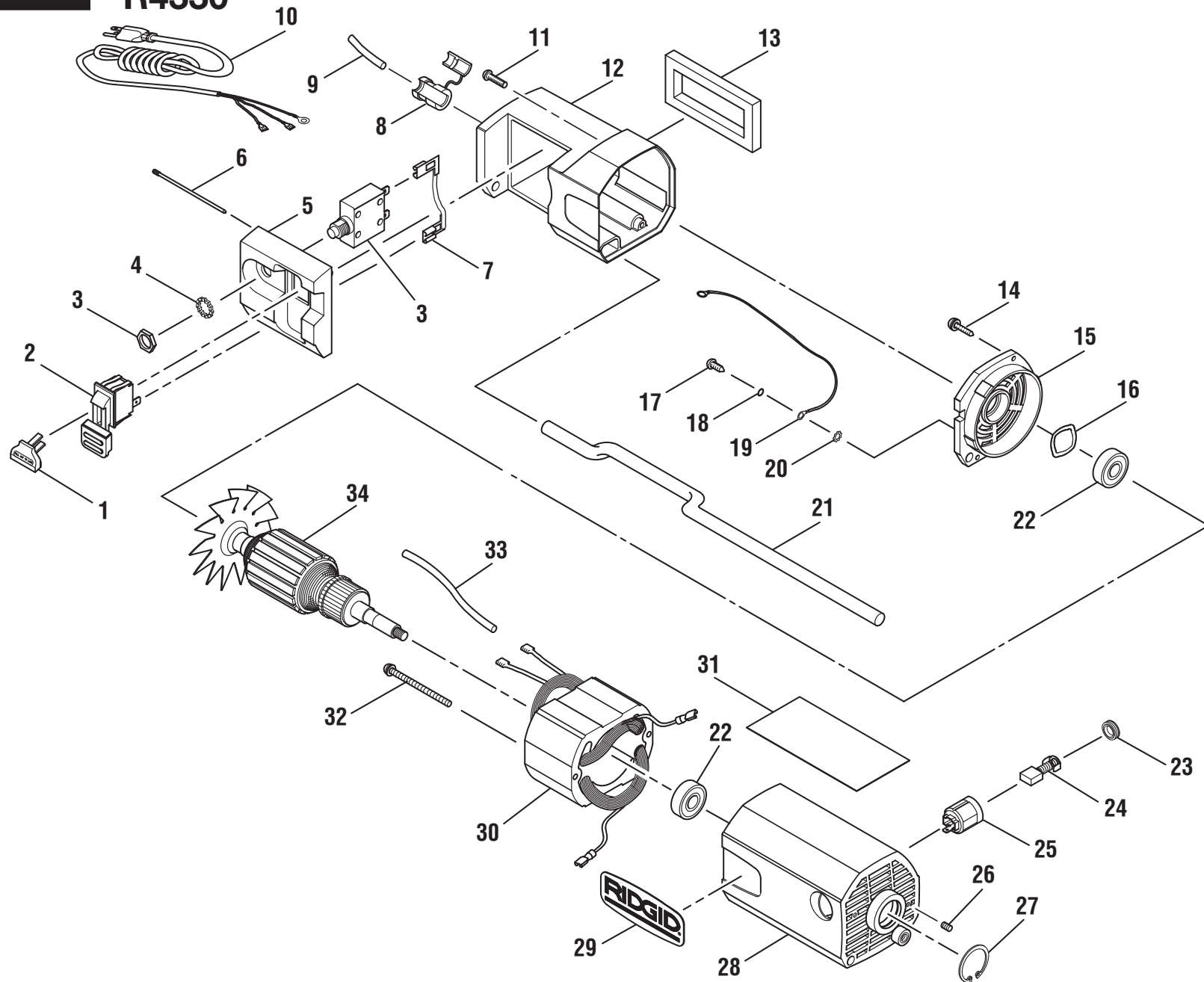
PARTS LIST FOR FIGURE B

KEY P/N	DESCRIPTION	QTY	KEY P/N	DESCRIPTION	QTY	KEY P/N	DESCRIPTION	QTY
1 089170105018	LEFT SIDE PANEL.....	1	24 089170105024	BEVEL GEAR.....	1	48 089170105088	WASHER (10.3 x 18 x 1t)	5
2 089170105081	CAP SCREW (M4.8 x 16 mm)	4	25 089170105100	SPRING	1	49 089170105034	BEARING RETAINER.....	5
3 089170105013	BALL BEARING.....	4	26 089170105077	EXTERNAL RETAINING RING	3	50 089170105070	BALL BEARING.....	5
4 089170105082	SCREW (M4.8 x 10 mm, SINK HD.).....	8	27 089170105063	BALL BEARING.....	1	51 823742-1	STEEL BALL.....	1
5 089170105023	SCREW POST	4	28 089170105101	DRIVE SHAFT.....	1	52 827760	SPRING (7.62 x 15.75 x 0.7t).....	1
6 089170105015	LEFT COLUMN SUPPORT.....	2	29 089170105019	RIGHT SIDE PANEL	1	53 089170105069	PIVOT ROD	1
7 827705	GUIDE RAIL.....	2	30 089170105801	MOTOR ASSEMBLY	1	54 827752	ADJUSTING BOLT (M10)	4
8 828943-1	SCREW W/LOCK WASHER (M5 x 10 mm)	8	31 089170105020	HANDWHEEL	1	55 827817	HEX NUT (M10 x 1.5, SPECIAL) ...	4
9 089170105094	UPPER ELEVATION NUT	4	32 089170105021	HANDWHEEL KNOB.....	1	56 089170105009	IDLER WHEEL.....	2
10 089170105016	RIGHT COLUMN SUPPORT	2	33 089170105067	SCREW W/LOCK WASHER (M5 x 16 mm)	2	57 089170105008	IDLER WHEEL SHAFT	2
11 089170105078	SCREW (M5 x 8 mm, NYLOCK HEX SOC. BUTTON HD.).....	40	34 089170105806	DEPTH ADJUSTMENT HANDWHEEL ASSEMBLY (INCL. KEY NOS. 31-33)	1	58 089170105075	SCREW (M5 x 25 mm, NYLOCK HEX SOC. BUTTON HD.).....	2
12 827694	PLANER TABLE.....	1	35 089170105205	REPEAT-A-CUT™ LABEL	1	59 089170105073	CHAIN	1
13 089170105095	ELEVATION NUT (LOWER).....	4	36 089170105099	WASHER	1	60 089170105087	SPACER (10.5 x 18 x 12t).....	1
14 089170105038	BLADE/TOOL STORAGE CAP	1	37 089170105203	THICKNESS SCALE LABEL.....	1	61 089170105042	SPACER (12.5 mm x 25.8 mm x 2t)	4
15 089170105805	BLADE/TOOL STORAGE (INCL. KEY NO. 14)	1	38 089170105039	REPEAT-A-CUT™ KNOB	1	62 813164-7	HEX NUT (M6)	4
16 089170105029	MAGNETIC BLADE REMOVAL TOOL.....	1	39 089170105058	SCREW (M5 x 12 mm, HEX SOC. BUTTON HD.)	4	63 821388-3	SCREW (M6 x 25 mm, HEX HD.) ..	4
17 089170105028	HEX KEY (BLADE WRENCH)	1	40 827700	REPEAT-A-CUT™ BLOCK.....	1	64 828945	SCREW W/LOCK WASHER (M5 x 10 mm)	8
18 089170105060	OUTFEED TABLE EXTENSION	1	41 089170105033	REPEAT-A-CUT™ GUARD	1	65 827736	SPRING PLATE	4
19 089170105076	CAP SCREW (M5 x 16 mm, HEX SOC.).....	2	42 089170105068	REPEAT-A-CUT™ BLOCK PIN	1	66 089170105027	BASE.....	1
20 089170105010	WASHER (5.3 x 12 x 1.5t)	2	43 813164-7	HEX NUT (M6 X P1.0).....	1	67 089170105053	WASHER (19.8 x 23.5 x 0.8t)	4
21 089170105083	SCREW (M5 x 12 mm, NYLOCK HEX SOC. BUTTON HD.).....	1	44 089170105074	CHAIN	1	68 089170105204	LOGO LABEL	2
22 089170101119	SPRING WASHER.....	1	45 089170105072	CAP SCREW (M4 x 12 mm, NYLOCK).....	5	69 089170105061	INFEED TABLE EXTENSION	1
23 089170105096	WASHER (5.3 x 16 x 1.5t)	1	46 089170105071	WASHER (4.2 x 15 x 2t)	5	70 089170105098	BUSHING	1
			47 089170105037	SPROCKET	6			

RIDGID

R4330

FIGURE C /
FIGURE C /
FIGURA C





R4330

PARTS LIST FOR FIGURE C

KEY	P/N	DESCRIPTION	QTY
1	089170105105	SWITCH KEY.....	1
2	089170105104	SWITCH W/SWITCH KEY	1
3	827806	OVERLOAD PROTECTOR W/NUT (RESET BUTTON)	1
4	089170105093	EXTERNAL LOCK WASHER	1
5	089170105004	SWITCH BEZEL	1
6	827797	SCREW (SPECIAL).....	1
7	080033001630	LEAD WIRE W/TERMINAL (80 mm).....	1
8	089170101107	CORD BUSHING (STRAIN RELIEF)	1
9	089170105092	HEAT SHRINK TUBE (6.0 x 0.15 x 50 mm).....	1
10	089170105106	POWER CORD (INCL. KEY NO. 9).....	1
11	820240-7	SCREW (M5 x 20 mm, PAN HD.)	2
12	089170105001	REAR MOTOR HOUSING	1
13	089170105005	FOAM GASKET	1
14	828946	SCREW W/LOCK WASHER (M4.2 x 20 mm).....	4
15	089170105003	MOTOR END CAP.....	1
16	820510-6	WAVY WASHER	1
17	820257-1	SCREW W/WASHER (M5 x 8 mm, PAN HD.).....	1
18	089170101119	SPRING WASHER.....	1
19	827812	LEAD WIRE W/TERMINAL (300 mm)	1
20	813314-8	EXTERNAL LOCK WASHER	1
21	827807	MOTOR PIVOT ROD	1
22	820722-3	BALL BEARING (6201 LLB)	2
23	827810	BRUSH CAP	2
24	089170105102	BRUSH.....	2
25	827809	BRUSH HOLDER	2
26	821065-3	SET SCREW (M5 x 12 mm, HEX SOC. HD.).....	2
27	826551-1	RETAINING RING	1
28	089170105002	FRONT MOTOR HOUSING.....	1
29	089170105201	LOGO LABEL	1
30	827801	FIELD ASSEMBLY.....	1
31	089170105202	DATA LABEL.....	1
32	828947	SCREW W/LOCK WASHER (M4.8 x 75 mm).....	2
33	827706	SLEEVE	1
34	089170101126	ARMATURE ASSY. (INCL. KEY NO. 22).....	1
	983000555	OPERATOR'S MANUAL	
	1-18-10		
	(REV:12)		