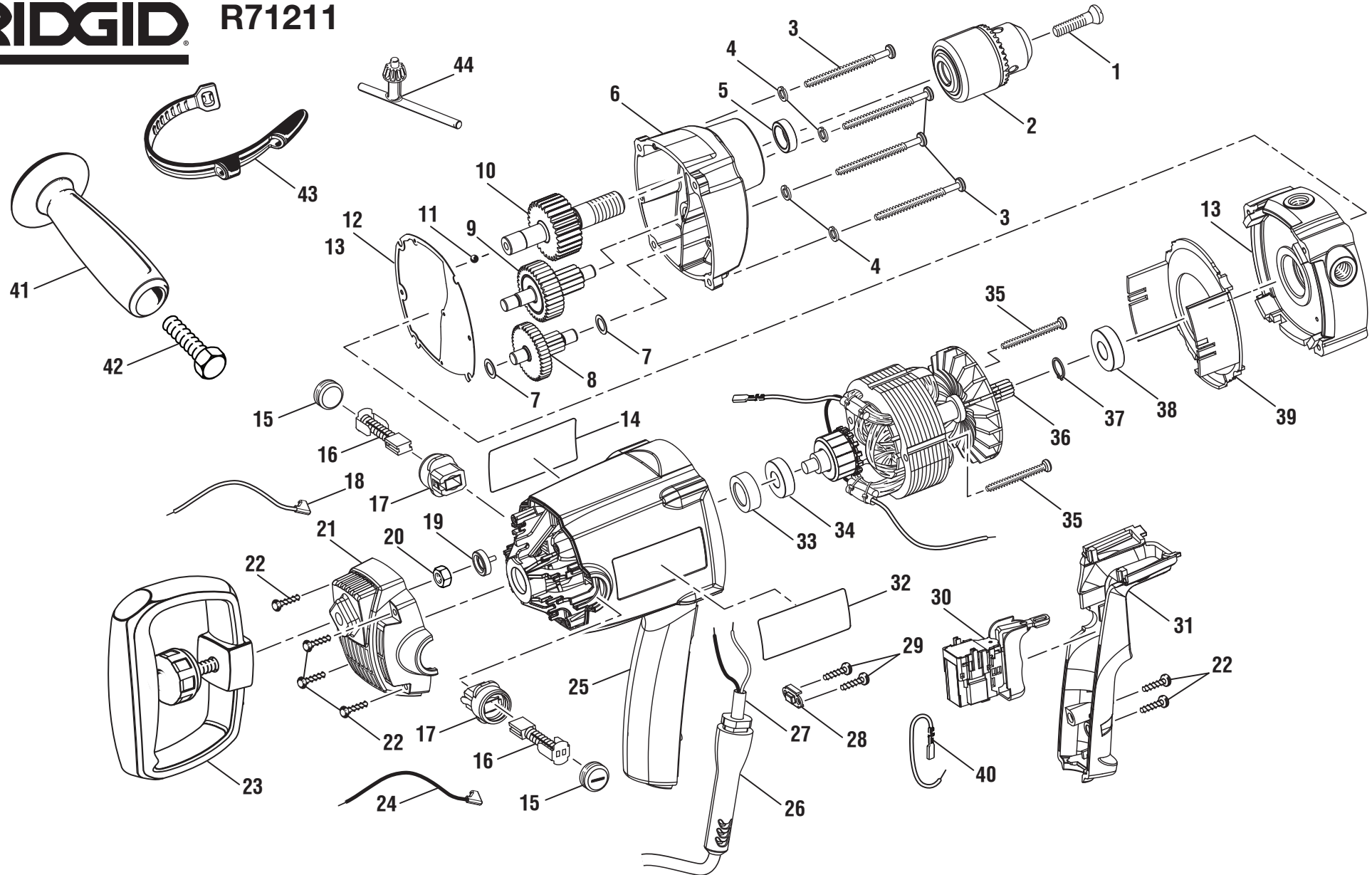


# RIDGID® R71211



- ▲ **WARNING:** The assembly shown represents an important part of the Double Insulated System. To avoid the possibility of alteration or damage to the System, service should be performed by your nearest authorized service center.
- ▲ **AVERTISSEMENT:** L'ensemble illustré représente une partie importante du système à isolation double. Afin d'éviter la possibilité de modification ou de dommage au système, la réparation ne doit être effectuée que par votre centre de réparation centre commercial autorisé.
- ▲ **ADVERTENCIA:** El conjunto que se ilustra representa una parte importante del Sistema de Aislamiento Doble. Para evitar la posibilidad de alteración o daño del sistema, la reparación debe ser efectuada en su centro de servicio autorizado.



# R71211 Spade Handle Drill

KEY	P/N	DESCRIPTION	QTY	KEY	P/N	DESCRIPTION	QTY	KEY	P/N	DESCRIPTION	QTY
1	6613402	Screw (M6 x 27 mm, Special).....	1	18	290116043	White Brush Lead .....	1	35	660259011	Screw (M4 x 41 mm, Pan Hd.).....	2
2	670799001	Chuck.....	1	19	590984001	Hex Nut Cover .....	1	36	200216094	Motor Assembly (Inc. Key Nos. 34 and 37-38) .....	1
3	660299003	Screw (M5 x 65 mm, Torx Pan Hd.) .....	4	20	690551001	Hex Nut (M8 x 6.5 mm).....	1	37	6939601	Retaining Ring .....	1
4	670960004	Spring Washer (M5) .....	4	21	590983002	Housing Rear Cover .....	1	38	690191002	Ball Bearing (6001 2RS).....	1
5	680323002	Spacer .....	1	22	660054002	Screw (M3.5 x 16 mm, Torx Pan Hd.) .....	6	39	590974002	Baffle.....	1
6	300114036	Output Gear Housing Assembly .....	1	23	300067473	Rear Handle Assembly .....	1	40	290102013	Jumper Lead.....	1
7	670037003	Washer (OD13 x ID8.5 x 0.5t) .....	2	24	290116044	Black Brush Lead .....	1	41	590986001	Side Handle .....	1
8	300460006	Gear & Spindle Assembly (#2) .....	1	25	590978004	Motor Housing .....	1	42	661265001	Bolt (1/2-13 x 56 mm, Hex Hd.).....	1
9	300460017	Gear & Spindle Assembly (#3) .....	1	26	560963001	Bend Relief .....	1	43	560989001	Chuck Key Strap.....	1
10	300003111	Output Gear & Spindle Assembly ....	1	27	730387037	Power Cord.....	1	44	672326001	Chuck Key .....	1
11	6721901	Ball (5 mm).....	1	28	6933702	Cord Clamp .....	1	<b>NOT SHOWN:</b>			
12	900860001	Gasket.....	1	29	660182008	Screw (#6 x 12 mm, Pan Hd.).....	2	988000318	Operator's Manual .....	1	
13	300926009	Bearing Plate Assembly.....	1	30	760406019	Switch .....	1	6-19-12			
14	940304019	Logo Label.....	1	31	591129001	Motor Housing Handle Cover .....	1	(REV:03)			
15	511534002	Brush Cap.....	2	32	940488200	Data Label.....	1				
16	290255001	Brush w/Spring .....	2	33	560881002	Bearing Cap (Seat).....	1				
17	301035005	Brush Holder.....	2	34	681141002	Ball Bearing (608ZZ) .....	1				