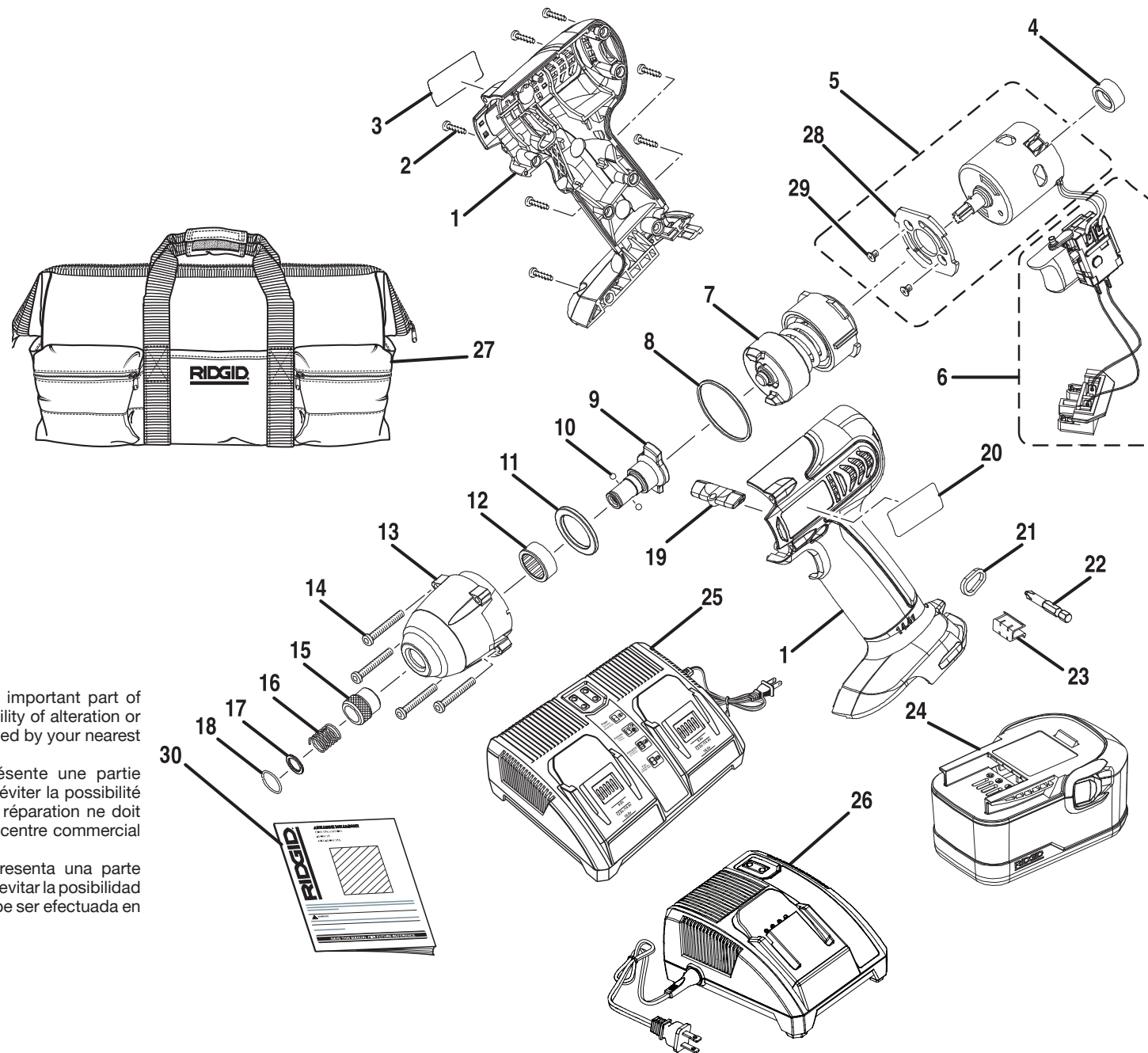


RIDGID

R84230



▲ **WARNING:** The assembly shown represents an important part of the Double Insulated System. To avoid the possibility of alteration or damage to the System, service should be performed by your nearest authorized service center.

▲ **AVERTISSEMENT :** L'ensemble illustré représente une partie importante du système à isolation double. Afin d'éviter la possibilité de modification ou de dommage au système, la réparation ne doit être effectuée que par votre centre de réparation centre commercial autorisé.

▲ **ADVERTENCIA:** El conjunto que se ilustra representa una parte importante del Sistema de Aislamiento Doble. Para evitar la posibilidad de alteración o daño del sistema, la reparación debe ser efectuada en su centro de servicio autorizado.



R84230 Impact Driver

KEY	P/N	DESCRIPTION	QTY	KEY	P/N	DESCRIPTION	QTY	KEY	P/N	DESCRIPTION	QTY
1	200202377	HOUSING ASSEMBLY	1	12	680413013	BUSHING	1	23	6320601	BIT CLIP	1
2	660024012	* SCREW (M4 x 16 mm PAN HD.)	7	13	640879001	FRONT HOUSING.....	1	24	130254003	BATTERY PACK	1
3	940115112	DATA LABEL.....	1	14	660024016	* SCREW (M4 x 20 mm Pan Hd.)	4	25	140276002	DUAL PORT CHARGER (R9222)	1
4	570293001	BUMPER	1	15	690260004	COUPLER	1	26	140276001	SINGLE PORT CHARGER (R84230)	1
5	230086005	MOTOR ASSEMBLY	1	16	690261001	SPRING.....	1	27	901282001	COMBO BAG (R9222).....	1
6	270023120	SWITCH ASSEMBLY.....	1	17	690266001	WASHER	1	28	631312001	MOTOR MOUNTING BRACKET	1
7	220018017	GEAR BOX ASSEMBLY	1	18	690258001	RETAINING RING.....	1	29	660213016	* SCREW (M4 x 6 mm FLAT HD.).....	2
8	570294001	SEAL RING.....	1	19	512902001	DIRECTION OF ROTATION SELECTOR .	1	30	983000788	OPERATOR'S MANUAL (961025001).....	1
9	671562001	ANVIL	1	20	940203047	LOGO LABEL	1	31	983000788R	REPAIR SHEET (NOT SHOWN)	1
10	690268001	BALL (3.5 mm)	2	21	690164002	STRIP RING	1		02-02-06		
11	671564001	WASHER	1	22	670800058	BIT (#2 PHILIPS HEAD, 50 mm).....	1		(REV:02)		

* Standard Hardware Item – May Be Purchased Locally