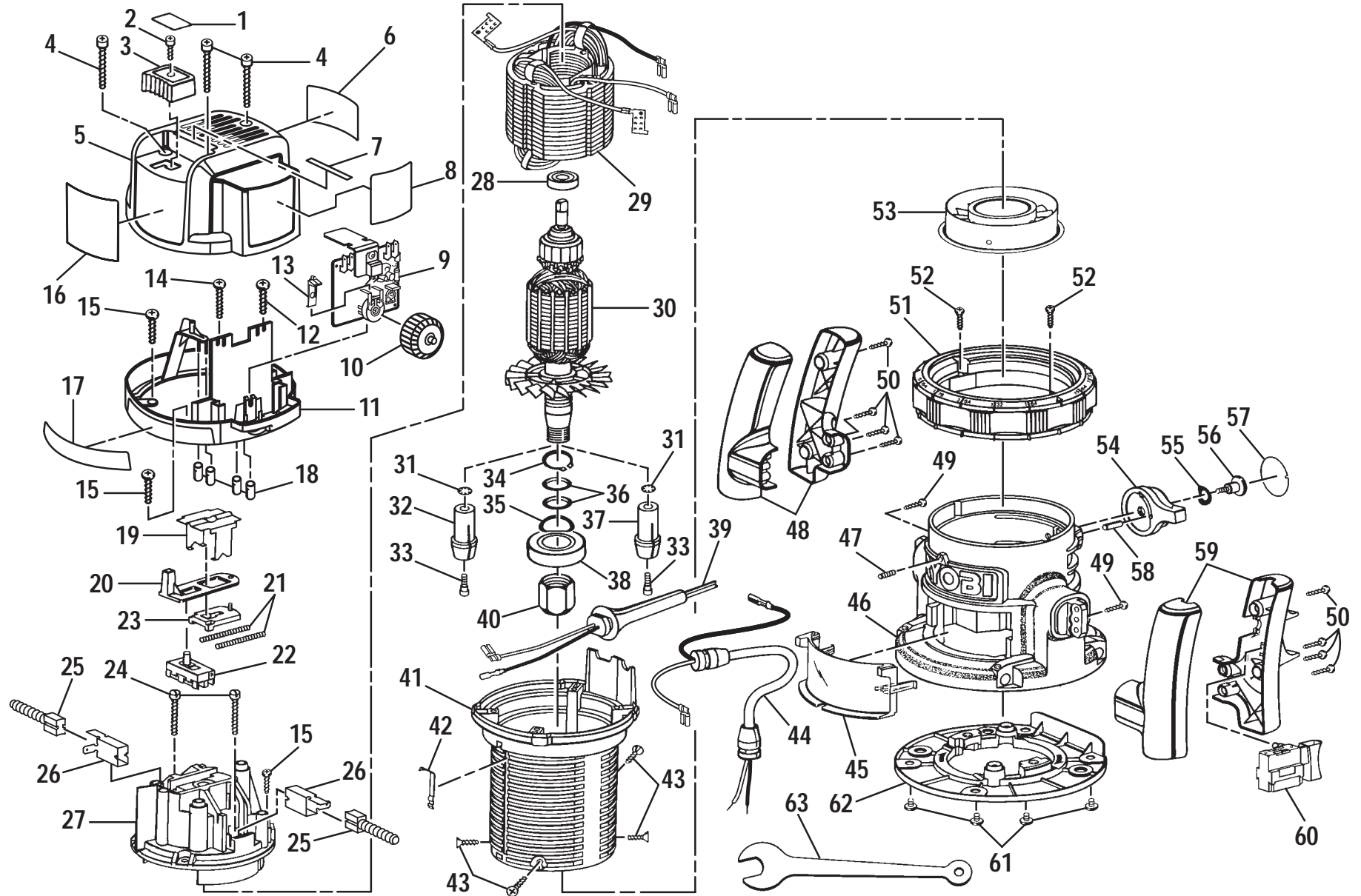


# RYOBI ROUTER – MODEL NUMBER RE170VS



## ⚠️ WARNING:

Improper repair of a double insulated tool can result in damages to the double insulation system possibly causing electrical shock or electrocution. Any repairs requiring disassembly of your tool requires safety testing and should only be performed by a Ryobi authorized service center. For the repair center nearest you call 1-800-525-2579 in the United States or 1-800-265-6778 in Canada.

## RYOBI ROUTER – MODEL NUMBER RE170VS

The model number will be found on a plate attached to the motor housing. Always mention the model number in all correspondence regarding your **ROUTER** or when ordering repair parts.

### PARTS LIST

Key No.	Part Number	Description	Quan.	Key No.	Part Number	Description	Quan.
1	974323-001	SHAFT LOCK LABEL .....	1	34	617932-002	RETAINING RING .....	1
2	999053-003	SCREW (#5-10 X 1/2 IN. FIL. HD.) .....	1	35	622347-018	WASHER .....	1
3	973671-001	ACTUATOR BUTTON .....	1	36	969313-001	O RING .....	2
4	989592-002	SCREW (#8-10 X 1-3/8 IN. FIL. HD.) .....	3	37	974252-005	1/4 IN. COLLET ASSEMBLY (INCLUDES ONE OF KEY NOS. 31 AND 33) ....	1
5	974799-001	UPPER END CAP .....	1	38	968305-041	BALL BEARING (6004LLBCM) .....	1
6	982016-001	DATA PLATE .....	1	39	970105-024	CORD .....	1
7	974289-001	CAUTION LABEL .....	1	40	973844-001	1/2 IN. COLLET NUT .....	1
8	974927-001	SPEED CONTROL LABEL .....	1	41	973657-002	MOTOR HOUSING .....	1
9	974617-001	SPEED CONTROL MODULE .....	1	42	973688-001	POINTER .....	1
10	974779-001	SPEED CONTROL DIAL .....	1	43	612556-003	SCREW (#8-18 X 9/16 IN. FLAT HD. PHILLIPS T.C.) .....	4
11	974800-001	LOWER END CAP .....	1	44	982020-002	POWER HANDLE CORD .....	1
12	990705-009	SCREW (#8-22 X 5/8 IN. PAN HD. HI-LO) .....	1	45	973672-001	CHIP SHIELD .....	1
13	970771-001	DIAL DETENT RATCHET .....	1	46	974908-004	BASE (INCLUDES KEY NO. 58) .....	1
14	616081-003	SCREW (#8-18 X 1 IN. PAN HD. T.C.) .....	1	47	726676-002	SET SCREW (#8-32 X 7/16 IN. FLAT POINT) ..	1
15	616081-014	SCREW (#8-18 X 11/16 IN. PAN HD. T.C.) .....	3	48	974998-001	AUXILIARY HANDLE ASSEMBLY .....	1
16	974907-001	LOGO PLATE .....	1	49	616968-003	SCREW (#6-20 X 5/8 IN. PAN HD. T.C.) .....	2
17	982261-001	LOWER END CAP LABEL .....	1	50	610120-005	SCREW (#6-10 X 3/4 IN. PAN HD.) .....	8
18	975029-001	BUMPER .....	4	51	974239-002	RING ASSEMBLY .....	1
19	989573-001	RETAINER CLIP .....	1	52	974516-001	SCREW (#4-40 X 3/4 IN. PAN HD.) .....	2
20	973679-001	SHAFT LOCK LEVER .....	1	53	974098-001	LOWER BEARING PLATE .....	1
21	612855-001	SPRING .....	2	54	973669-001	DEPTH LOCK LEVER .....	1
22	968303-098	SWITCH .....	1	55	622347-020	WASHER .....	1
23	612858-002	SLIDE LOCK ASSEMBLY .....	1	56	970712-002	SCREW (#10-32 X 5/16 IN. PAN HD.) .....	1
24	714096-807	SCREW (#10-16 X 1 IN. FIL. HD. T.F.) .....	2	57	973689-001	LOCK LEVER LABEL .....	1
25	968304-026	BRUSH ASSEMBLY .....	2	58	623924-007	NEEDLE ROLLER .....	1
26	611686-003	BRUSH TUBE .....	2	59	974997-001	POWER HANDLE ASSEMBLY .....	1
27	974959-002	TOP BEARING PLATE .....	1	60	968303-046	SWITCH .....	1
28	968305-010	BALL BEARING (NTN#608ZZ/1E) .....	1	61	998586-001	SCREW (#10-32 X 1/4 IN. PAN HD.) .....	4
29	968307-141	FIELD .....	1	62	973668-002	SUBBASE .....	1
30	968306-131	ARMATURE (INCLUDES KEY NO. 28) .....	1	63	974518-001	WRENCH (7/8 IN.) .....	1
31	607896-001	RETAINING RING .....	2		972000-774R	OWNER'S MANUAL	
32	974252-003	1/2 IN. COLLET ASSEMBLY (INCLUDES ONE OF KEY NOS. 31 AND 33) ....	1		10-00		
33	974096-001	SHOULDER SCREW .....	2				