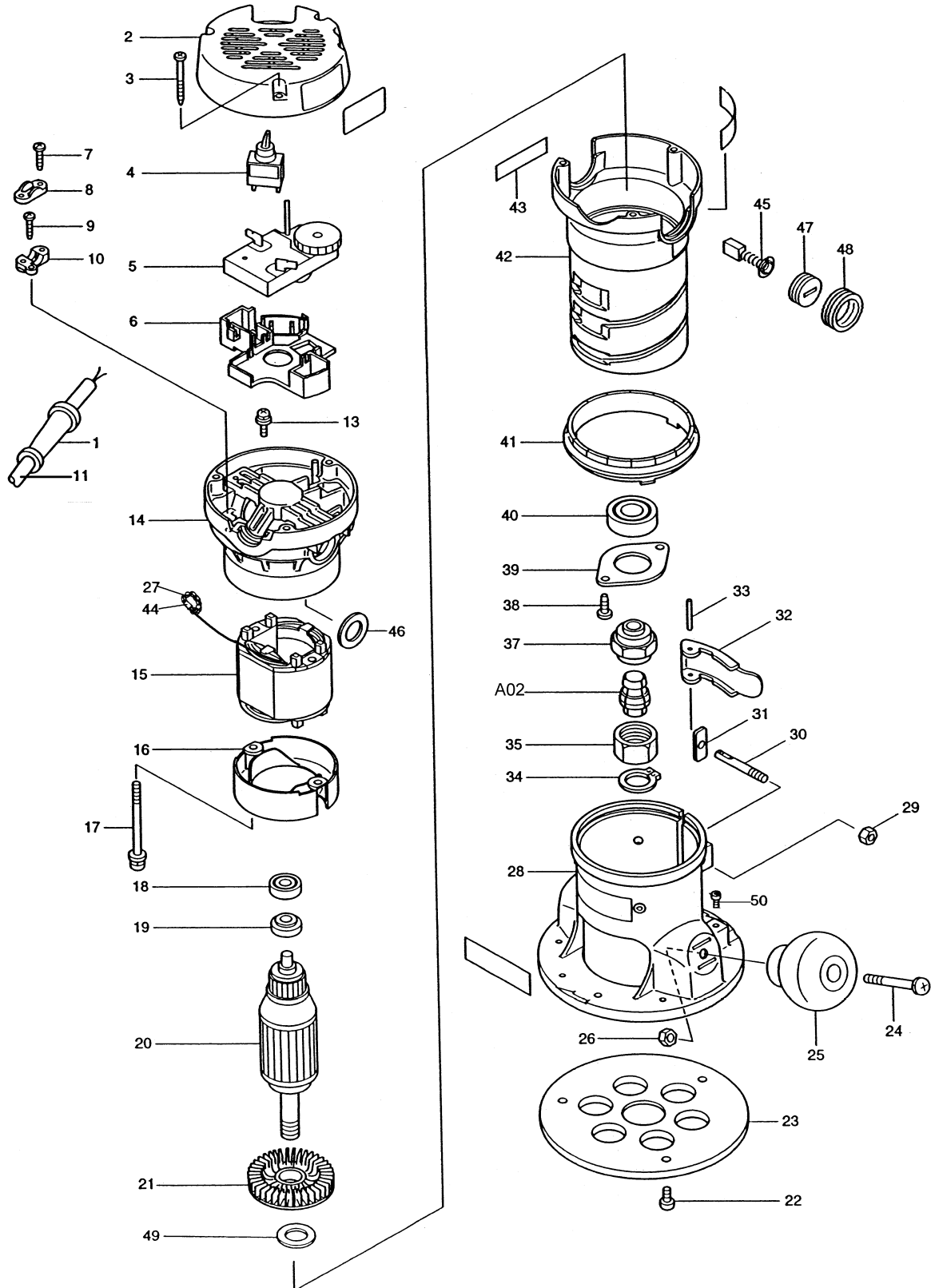
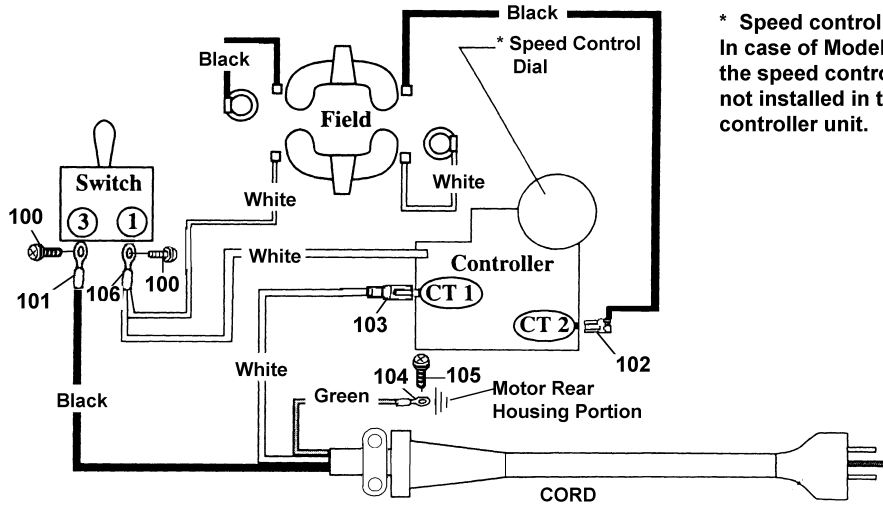



**2.0 HP ROUTER
 VARIABLE SPEED DOG EAR**


**Model RF1101 (MCA)
 Model RF1101KIT (MCA)**

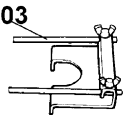


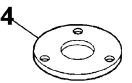
WIRING DIAGRAM



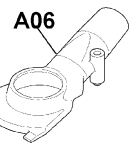
A01 

A02 

A03 

A04 

A05 

A06 

Item No.	Part No.	No. Used	Description	Item No.	Part No.	No. Used	Description
1	682505-8	1	Cord Guard 10-90	30	323968-6	1	Support Pin
2	417140-1	1	Rear Cover	31	344852-2	1	Plate
3	266203-8	3	Tapping Screw Bind Ct 4x40	32	344851-4	1	Lock Lever
4	651423-1	1	Switch	33	268063-4	1	Pin 4
5	631397-2	1	Controller	34	961056-7	1	Retaining Ring S-16
6	417143-5	1	Controller Holder	35	763642-8	1	Collet Nut
7	265995-6	2	Tapping Screw 4X18	37	763641-0	1	Collet Body
8	687052-4	1	Strain Relief	38	266035-3	2	Tapping Screw Bind CT 5X12
9	266034-5	1	Tapping Screw CT 4X16	39	285689-7	1	Bearing Retainer 55
10	687100-9	1	Strain Relief	40	211228-7	1	Ball Bearing 6202DDW
11	565056-5	1	Cord With Plug 3P-16-2.5 (Includes Items 1, 101, 103 & 104)	41	417137-0	1	Scale Ring
13	652014-1	1	P.H. Screw M4X8	42	317319-3	1	Motor Housing
14	151879-3	1	Motor Rear Housing Com.(Includes 2X643708-9 Brush Holder 5-11)	43	817362-7	1	Caution Label (CA)
15	594356-6	1	Field Assy (Includes Item 27, 44 & 102)	44	654501-6	2	Connector P-1.25
16	417136-2	1	Baffle Plate	45	191963-2	2	Carbon Brush CB-303 (2pcs/Set)
17	911686-4	2	P.H. Screw M5X65	46	681009-7	2	Washer
18	210005-4	1	Ball Bearing 608DDW	47	643750-0	2	Brush Holder Cap
19	681650-6	1	Insulation Washer	48	681655-6	2	Holder Ring
20	518633-2	1	Armature Assy (Includes Items 18 19 & 21)	49	253853-8	1	Flat Washer 15
21	240031-9	1	Fan 60	50	922212-4	2	H.S.H. Bolt M5X12
22	265081-3	3	+ P.H.Screw W3/16-24X10	100	652008-6	2	P.H. Screw M3.5X7
23	417138-8	1	Base Plate	101	654037-5	1	Insulating Terminal
24	911378-5	2	P.H. Screw M6X55	102	654069-2	1	Receptacle
25	271313-8	2	Knob 55	103	654110-1	1	Insulating Receptacle
26	931301-4	2	Hex. Nut M6	104	654113-5	1	Terminal R1.25-3.5
27	654020-2	2	Garter Spring	105	652014-1	1	P.H. Screw M4X8
28	151880-8	1	Router Base Com.	106	654198-1	1	Insulating 4Terminal
	193103-8	1	Router Base Set (Includes Items 22-26, 28-33 & 41) (RF1101 KIT) (For Breakdown See Model RP1101)				
29	252014-7	1	Hex. Lock Nut M6-10				
				Accessories			
				A01	781031-5	2	Wrench 27- Bulk
					193234-3	1	Wrench 27- Packaged
				A02	193214-9	1	Collet Cone 1/4" (6.35)
					193215-7	1	Collet Cone 1/2" (12.7)
				A03	193073-1	1	Straight Guide

Item No .	Part No.	No. Used	Description	Item No .	Part No.	No. Used	Description
A04	193155-9	1	Clear Base Plate	A07	125153-5	1	Plastic Carrying Case Set
A05	-----	1	Templet Guide (See Catalogue for Details)				(For RF1101 Kit) (Includes Items A08 & A09) (Photo not available)
A06	193379-7	1	Dust Nozzle Set (Includes Thumb Screw - 265746-7) (To be Connected to any Makita Vacuum)	A08	417700-9	1	Handle
				A09	416401-6	2	Latch