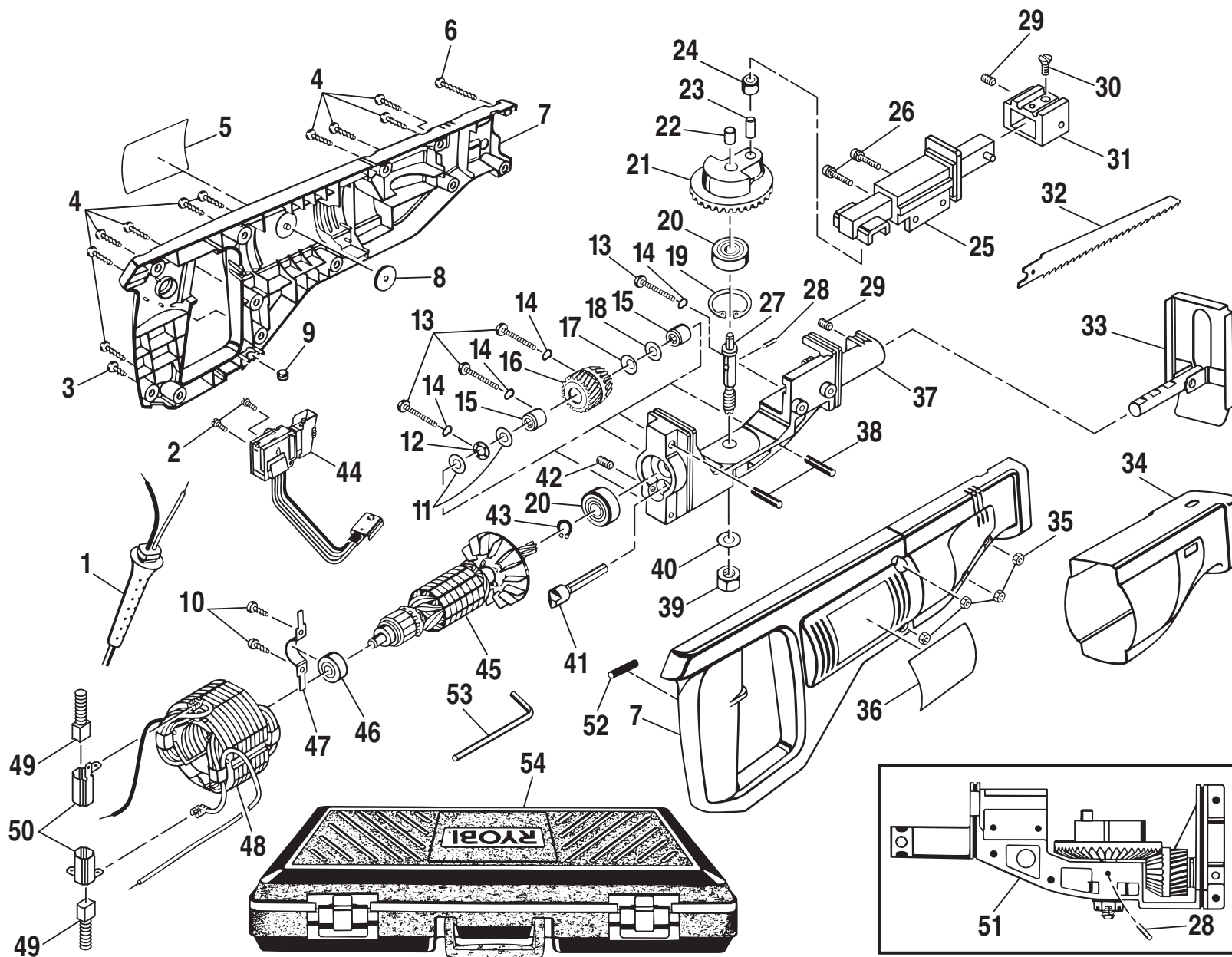


RYOBI RECIPROCATING SAW – MODEL NUMBER RJ150V-01



**⚠ WARNING:**  
 Improper repair of a double insulated tool can result in damages to the double insulation system possibly causing electrical shock or electrocution. Any repairs requiring disassembly of your tool requires safety testing and should only be performed by a **Ryobi Factory Service Center** or other **Qualified Service Organization**.

## RYOBI RECIPROCATING SAW – MODEL NUMBER RJ150V-01

The model number will be found on a plate attached to the motor housing. Always mention the model number in all correspondence regarding your **RECIPROCATING SAW** or when ordering repair parts.

### PARTS LIST

Key No.	Part Number	Description	Quan.	Key No.	Part Number	Description	Quan.
1	990496-016	CORD .....	1	30	623934-002	BLADE SCREW .....	1
2	968775-001	SCREW (M3 X 7 FIL. HD.) .....	2	31	981185-001	BLADE CLAMP ASSEMBLY (INCLUDES ONE OF KEY NO. 29) .....	1
3	617966-028	SCREW (#8-10 X 1/2 IN. PAN HD.) .....	1	32	974134-001	BLADE .....	1
4	617966-030	SCREW (#8-10 X 5/8 IN. PAN HD.) .....	10	33	973808-002	BASE ASSEMBLY .....	1
5	973703-001	LOGO PLATE .....	1	34	974040-001	RUBBER BOOT .....	1
6	617966-032	SCREW (#8-10 X 1-1/4 IN. PAN HD.) .....	1	35	706404-007	HEX NUT (#8-32) .....	4
7	973729-000	HOUSING ASSEMBLY .....	1	36	981052-001	DATA PLATE .....	1
8	623552-001	STATOR PAD .....	1	37	998280-002	GEAR SUPPORT FRAME .....	1
9	885883-028	GROMMET .....	1	38	941401-812	ROLL PIN .....	2
10	606124-007	SCREW (#6-20 X 1/2 IN. PAN HD. T.F.) .....	2	39	607406-011	HEX NUT (#3/8-24) .....	1
11	706239-830	WASHER .....	2	40	931055-825	WASHER .....	1
12	617401-001	THRUST BEARING .....	1	41	999970-004	SHAFT .....	1
13	614658-041	SCREW (#8-32 X 1-5/16 IN. PAN HD.) .....	4	42	998307-001	SET SCREW (#10-24 X 1/2 IN.) .....	1
14	622170-003	SPRING WASHER .....	4	43	622167-017	RETAINING RING .....	1
15	612801-005	ROLLER BEARING .....	2	44	968303-097	SWITCH .....	1
16	999969-001	GEAR ASSEMBLY (INCLUDES KEY NO. 15) ..	1	45	968306-078	ARMATURE ASSEMBLY (INCLUDES ONE OF KEY NO. 20, PLUS KEY NOS. 43, AND 46) .....	1
17	622347-008	WASHER .....	1	46	968305-010	BALL BEARING (NTN #608ZZC3/1E) .....	1
18	706382-812	WASHER .....	1	47	998408-001	BEARING STRAP .....	1
19	622167-067	RETAINING RING .....	1	48	968307-116	FIELD ASSEMBLY .....	1
20	968305-027	BALL BEARING (NTN #6200LLBC3/1E) .....	2	49	968304-058	BRUSH ASSEMBLY .....	2
21	999963-001	GEAR ASSEMBLY (INCLUDES KEY NOS. 22 AND 23) .....	1	50	611967-001	BRUSH TUBE .....	2
22	999964-001	SLEEVE BEARING .....	1	51	999348-001	GEAR TRAIN ASSEMBLY (INCLUDES KEY NOS. 11, 12, 15-23, 27, 28, AND 37-42) .....	1
23	607352-001	CROSS SLIDE PIN .....	1	52	620801-001	SLEEVING .....	1
24	607351-001	CROSS SLIDE ROLLER .....	1	53	820193-006	HEX KEY (#5/32) .....	1
25	980640-001	SAW BAR ASSEMBLY (INCLUDES KEY NO. 31) .....	1	54	973728-000	CARRYING CASE .....	1
26	621431-009	SCREW (#10-24 X 3/4 IN. FIL. HD.) .....	2		972000-634R	OWNER'S MANUAL	
27	999922-002	SHAFT .....	1		3-99		
28	941401-021	ROLL PIN .....	1				
29	998743-001	SET SCREW (#5/16-24) .....	2				