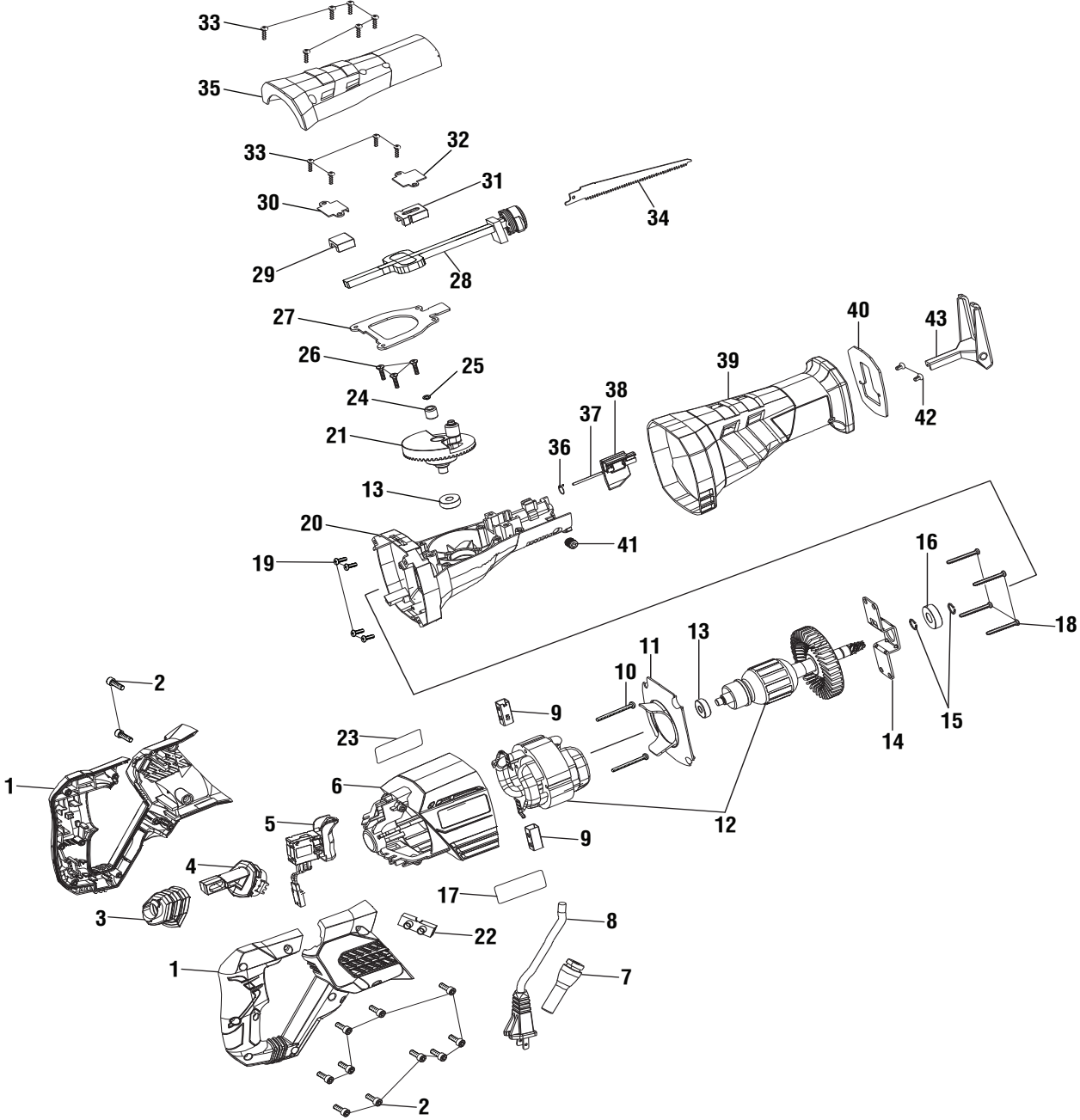


RYOBI RECIPROCATING SAW – MODEL NUMBER RJ185V



RYOBI RECIPROCATING SAW – MODEL NUMBER RJ185V

The model number will be found on a label attached to the motor housing. Always mention the model number in all correspondence regarding your **RECIPROCATING SAW** or when ordering repair parts.

PARTS LIST

KEY NO.	PART NUMBER	DESCRIPTION	QTY	KEY NO.	PART NUMBER	DESCRIPTION	QTY
1	202664001	Handle Assembly	1	24	6829601	Needle Bearing	1
2	660024015	Screw (M4 x 14 mm, T-20 Torx Hd.).....	12	25	6770401	Retaining Ring.....	1
3	562774001	Rubber Sleeve.....	1	26	661185001	Screw (#8-32 x 1/2 in., T-15 Torx Flat Hd.).....	3
4	523283001	Connecting Rod	1	27	6934501	Yoke Plate	1
5	760472006	Switch	1	28	304003003	Output Shaft Assembly	1
6	202665001	Motor Housing Assembly (Inc. Key Nos. 17 & 44).....	1	29	6935601	Guide Block (Rear).....	1
7	551060001	Bend Relief.....	1	30	6934901	Cover Plate (Rear).....	1
8	730372035	Power Cord	1	31	610730001	Guide Block (Front)	1
9	290075001	Brush Assembly	2	32	6934201	Cover Plate (Front).....	1
10	661748001	Screw (M4.2 x 44 mm, Pan Hd.)	2	33	661171001	Screw (M4 x 17 mm)	10
11	526258001	Baffle	1	34	690291006	Wood Cutting Blade.....	1
12	206187001	Motor Assembly (Inc. Key Nos. 13-16)	1	35	526259001	Gear Case Cover.....	1
13	680141022	Ball Bearing (608ZZ).....	2	36	690502001	Torsion Spring	1
14	634912002	Bearing Cover	1	37	6951801	Pin	1
15	6939601	C-Ring.....	2	38	306145001	Release Lever Assembly.....	1
16	690395005	Ball Bearing (6001ZZ).....	2	39	563258001	Rubber Boot.....	1
17	941121195	Data Label.....	1		563431001	Rubber Boot.....	1
18	660259008	Screw (M4.5 x 35 mm)	4	40	634971001	Guide Plate	1
19	660228012	Screw (M3 x 8 mm)	4	41	660170001	Screw (M6 x 14 mm)	1
20	642155002	Gear Case	1	42	660165015	Screw (M4 x 10 mm, T-20 Torx Hd.).....	2
21	202803001	Gear & Pin Assembly	1	43	300216056	Shoe Assembly	1
22	690331001	Terminal Block.....	1		Not Shown:		
23	940304497	Logo Label	1		990000631	Operator's Manual	
					2-24-14		
					(Rev:04)		

WARNING: Improper repair of a double insulated tool can result in damage to the double insulation system possibly causing electrical shock or electrocution. Any repairs requiring disassembly of your tool requires safety testing and should only be performed by a Ryobi Authorized Service Center. For the service center nearest you call 1-800-525-2579.