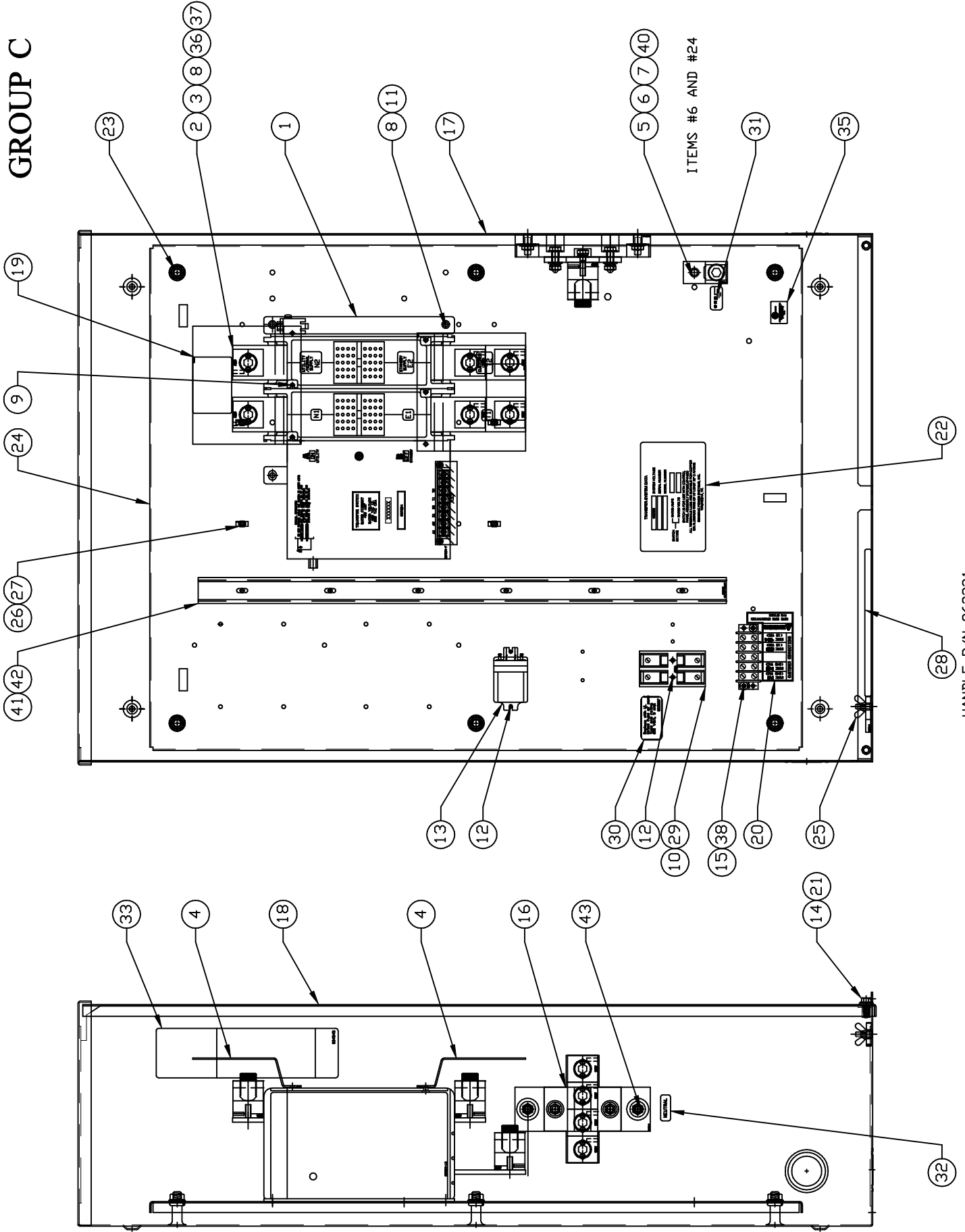


GROUP C



ITEMS #6 AND #24

EXPLODED VIEW:  
TRANSFER SWITCH 400A 120/240V 1PH  
DRAWING #: 0F6274A

HANDLE P/N 063321  
SUPPLIED W/SWITCH

EXPLODED VIEW: TRANSFER SWITCH 400A 120/240V 1PH  
DRAWING #: 0F6274A

GROUP C

APPLICABLE TO:

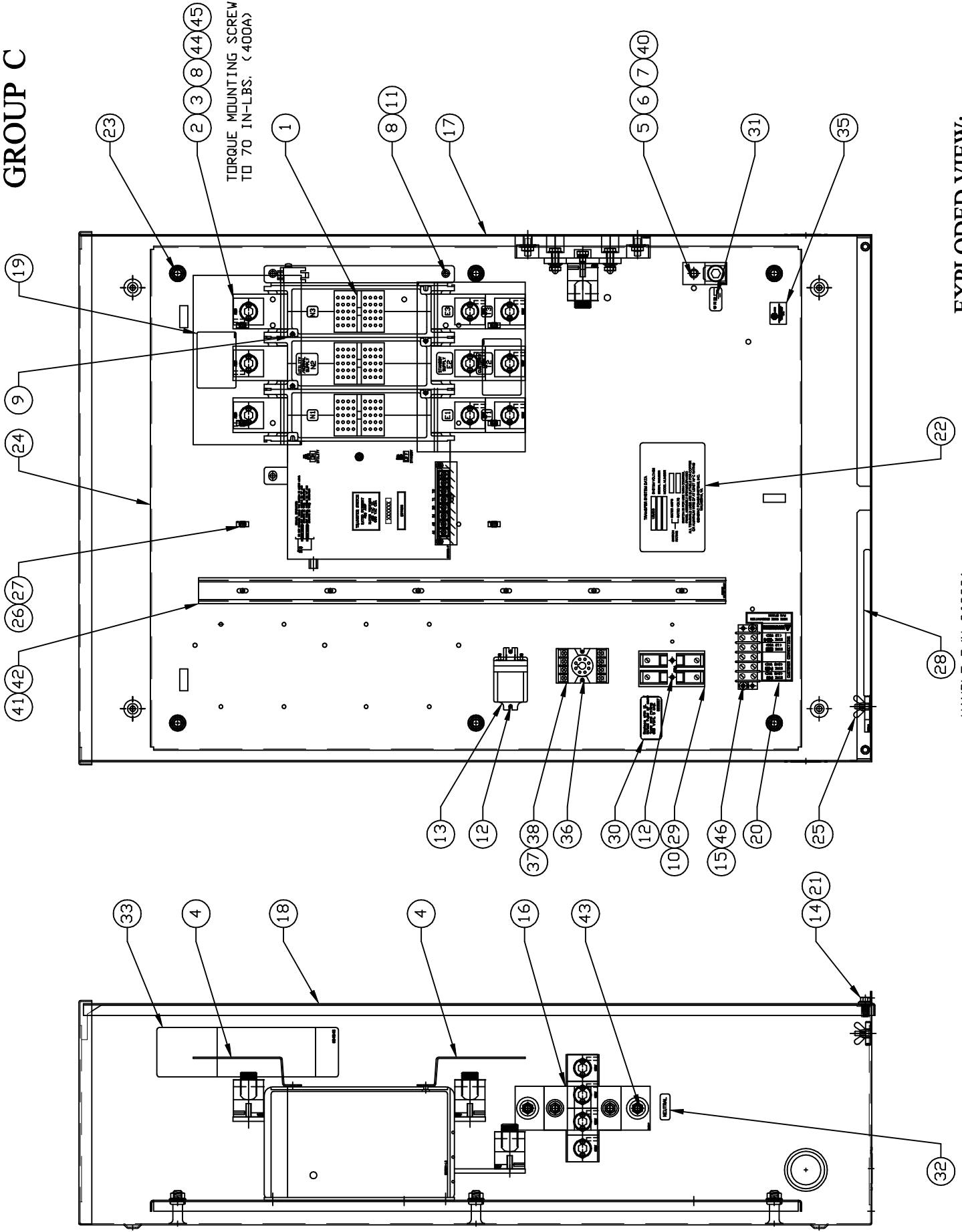
ITEM	PART #	QTY.	DESCRIPTION
1	0D7294	1	XFER SW-W 400A600V2P
2	0A7822	6	LUG SLDLSS 600/250-1/0X1/4-28
3	026902	5	SCREW HHTT #8-32 X 1/4 CZ
4	0C7907J	2	COVER LUG 2P 300/400AMP
5	024526	1	SCREW HHTT 5/16-18 X 3/4 CZ
6	057329	1	LUG SLDLSS 350-#6 X 13/32 AL/CU
7	027482	1	WASHER SHAKEPROOF EXT 5/16 STL
8	022097	9	WASHER LOCK M6-1/4
9	0C8275	4	SCREW PPHM DSEMS M4-7 X 10 ZNC
10**	0D2806	1	FUSEBLOCK 30A 600V 2 POS W/SQ
11	090388	3	SCREW HHTT M6-1.0 X 12 ZINC
12	0A1495	6	SCREW HHTT M4-0.7 X 10 BP
13**	063617	1	RELAY PNL 12VDC DPDT 10A@240VA
14	047411	2	SCREW HHC M6-1.0 X 16 G8.8
15	0A1661	2	RIVET POP.156 X.675 AL
16	0F4034	1	ASSY TERMINAL BLOCK 300-400A
17	0F59350ST14	1	ENCL RTS 3R 24X36X10 14GRAY
18	0F59390ST14	1	COVER, NEMA 3R XFER SW 08GRAY
19	0C8308	2	DECAL TERMINAL SHOCK HAZARD
20	0C2262	1	DECAL TERMINAL STRIP
21	0F6165	6	WASHER NYLON
22	0G5968C	1	DECAL_XFER SW NON 400A 120/240
23	064101	6	NUT HEX FL WHIZ 3/8-16
24	0F59400ST14	1	SUBPLATE 24/36 ENCL RTS 08GRAY
25	087680	1	NUT WING M6-1.0
26	063378	4	HOLDER CABLE TIE
27	064761	4	TIE WRAP UL 5.6X .10 NATL
28	063321	1	HANDLE XFER SWITCH 1-400A
29	073590A	2	FUSE 5A X BUSS
30	0D3587	1	DECAL FUSE REPLACEMENT
31	067210A	1	DECAL GROUND LUG
32	0A9457	1	DECAL NEUTRAL
33	0D4545	1	DECAL MANUAL OPERATION
34*	0F6129	1	DECAL TEST SEQUENCE 3P TS 3R
35	081221	1	DECAL-UL LIST HSB
36	0A8261	6	SCREW HHC 1/4-28 X 5/8 .625TH
37	022473	6	WASHER FLAT 1/4-M6 ZINC
38**	048850	1	BLOCK TERM 20A 5 X 6 X 1100V
39***	0F6521	1	DECAL TRANSFER SWITCH RTS
40	022129	1	WASHER LOCK M6-5/16
41	091472	1	DUCT WRING 1 X 1.5 (24" LG)
42	091472A	1	COVER WIRE DUCT 1 IN (24" LG)
43	067989	2	NUT HEX FL WHIZ M6-1.25
44	0F6273A	1	HARNES, 400A 2POLE 1PHASE

\* CENTER DECAL ON INSIDE OF THE COVER (ITEM #18)

\*\* ITEMS INCLUDED WITH HARNES

\*\*\* INSTALL ON FRONT OF THE COVER (ITEM #18)

# GROUP C



EXPLODED VIEW:  
TRANSFER SWITCH 400A 120/240V 3PH  
DRAWING #: 0F6276A

HANDLE P/N 063321  
SUPPLIED W/SWITCH

EXPLODED VIEW: TRANSFER SWITCH 400A 120/240V 3PH  
DRAWING #: 0F6276A

GROUP C

APPLICABLE TO:

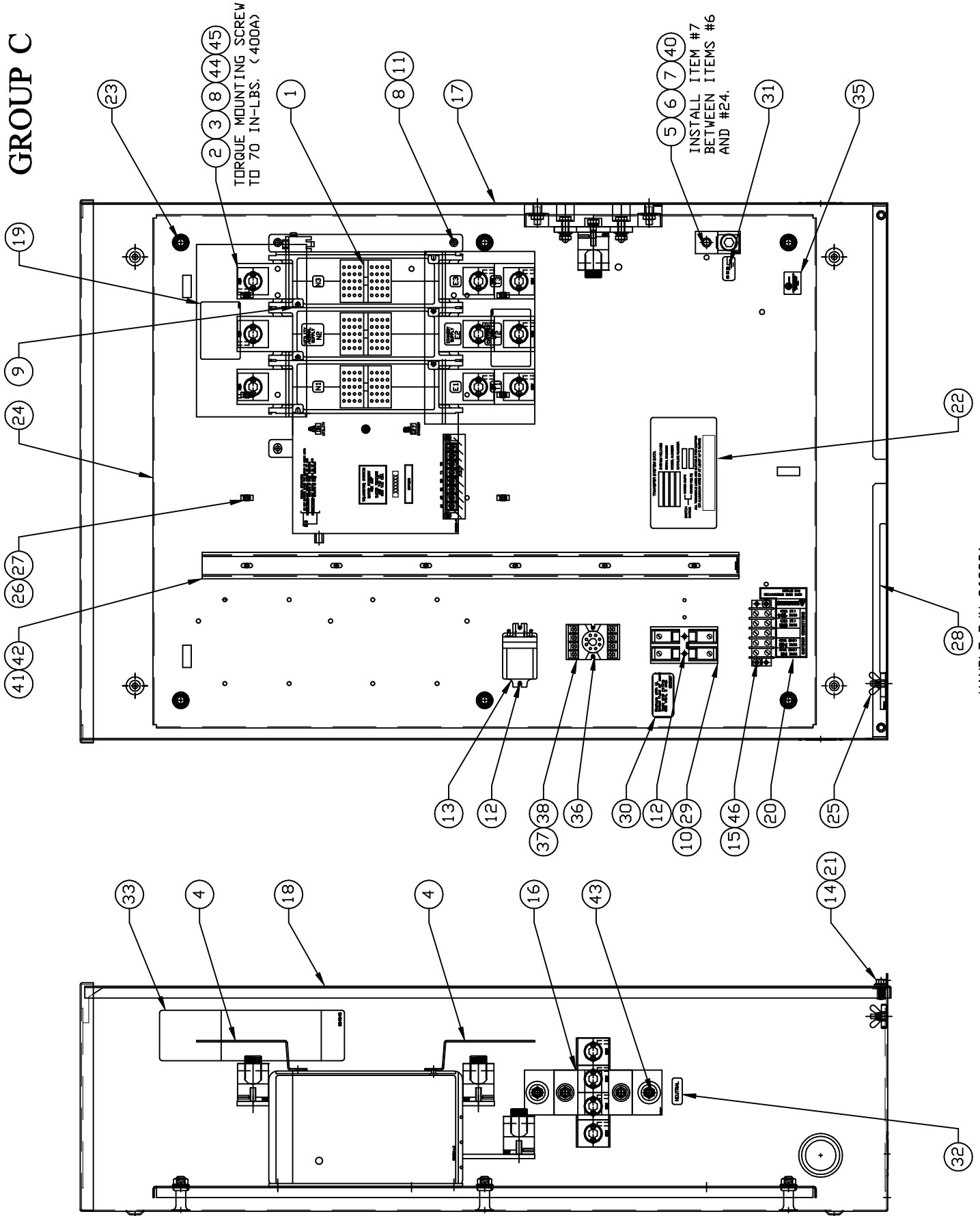
ITEM	PART #	QTY.	DESCRIPTION
1	0D7295	1	XFER SW-W 400A600V3P
2	0A7822	9	LUG SLDLSS 60/250-1/0X1/4-28
3	026902	5	SCREW HHTT #8-32 X 1/4 CZ
4	0C7907F	2	COVER LUG 3P 300/400AMP
5	024526	1	SCREW HHTT 5/16-18 X 3/4 CZ
6	057329	1	LUG SLDLSS 350-#6 X 13/32 AL/CU
7	027482	1	WASHER SHAKEPROOF EXT 5/16 STL
8	022097	12	WASHER LOCK M6-1/4
9	0C8275	4	SCREW PPHM DSEMS M4-7 X 10 ZNC
10**	0D2806	1	FUSEBLOCK 30A 600V 2 POS W/SQ
11	090388	3	SCREW HHTT M6-1.0 X 12 ZINC
12	0A1495	6	SCREW HHTT M4-0.7 X 10 BP
13**	063617	1	RELAY PNL 12VDC DPDT 10A@240VA
14	047411	2	SCREW HHC M6-1.0 X 16 G8.8
15	0A1661	2	RIVET POP .156 X .675 AL
16	0F4034	1	ASSY TERMINAL BLOCK 300-400A
17	0F59350S T14	1	ENCL RTS 3R 24X36X10 14GRAY
18	0F59390S T14	1	COVER, NEMA 3R XFER SW 08GRAY
19	0C8308	2	DECAL TERMINAL SHOCK HAZARD
20	0C2262	1	DECAL TERMINAL STRIP
21	0F6165	6	WASHER NYLON
22	PER MODEL	1	DECAL SWITCH RATING
23	064101	6	NUT HEX FL WHIZ 3/8-16
24	0F59400S T14	1	SUBPLATE 24/36 ENCL RTS 08GRAY
25	087680	1	NUT WING M6-1.0
26	063378	6	HOLDER CABLE TIE
27	064761	6	TIE WRAP UL 5.6 X .10 NATL
28	063321	1	HANDLE XFER SWITCH 1-400A
29	073590A	2	FUSE 5A X BUSS
30	0D3587	1	DECAL FUSE REPLACEMENT
31	067210A	1	DECAL GROUND LUG
32	0A9457	1	DECAL NEUTRAL
33	0D4545	1	DECAL MANUAL OPERATION
34*	0F6129	1	DECAL TEST SEQUENCE 3P TS 3R
35	081221	1	DECAL-UL LIST HSB
36	0A2284	2	SCREW SWAGE #8-32 X 1/2 ZYC
37	063306	1	POWER MONITOR 3-PHASE 160-240V
38**	066972	1	SOCKET RELAY OCTAL 8P 300V-10A
39***	0F6521	1	DECAL TRANSFER SWITCH RTS
40	022129	1	WASHER LOCK M8-5/16
41	091472	1	DUCT WIRING 1 X 1.5 (24" LG)
42	091472A	1	COVER WIRE DUCT 1 IN (24" LG)
43	067989	2	NUT HEX FL WHIZ M8-1.25
44	0A8261	9	SCREW HHC 1/4-28 X 5/8 .625TH
45	022473	9	WASHER FLAT 1/4-M6 ZINC
46**	048850	1	BLOCK TERM 20A 5 X 6 X 1100V
47	0F6273B	1	HARNESS 400A 3POLE 3PHASE

\* CENTER DECAL ON INSIDE OF THE COVER (ITEM #18)

\*\* ITEMS INCLUDED WITH HARNESS

\*\*\* INSTALL ON FRONT OF THE COVER (ITEM #18)

# GROUP C



EXPLODED VIEW:  
TRANSFER SWITCH 400A 3PH  
DRAWING #: 0G2606A

HANDLE P/N 063321  
SUPPLIED W/SWITCH

## EXPLODED VIEW: TRANSFER SWITCH 400A 3PH

DRAWING #: 0G2606A

GROUP C

APPLICABLE TO:

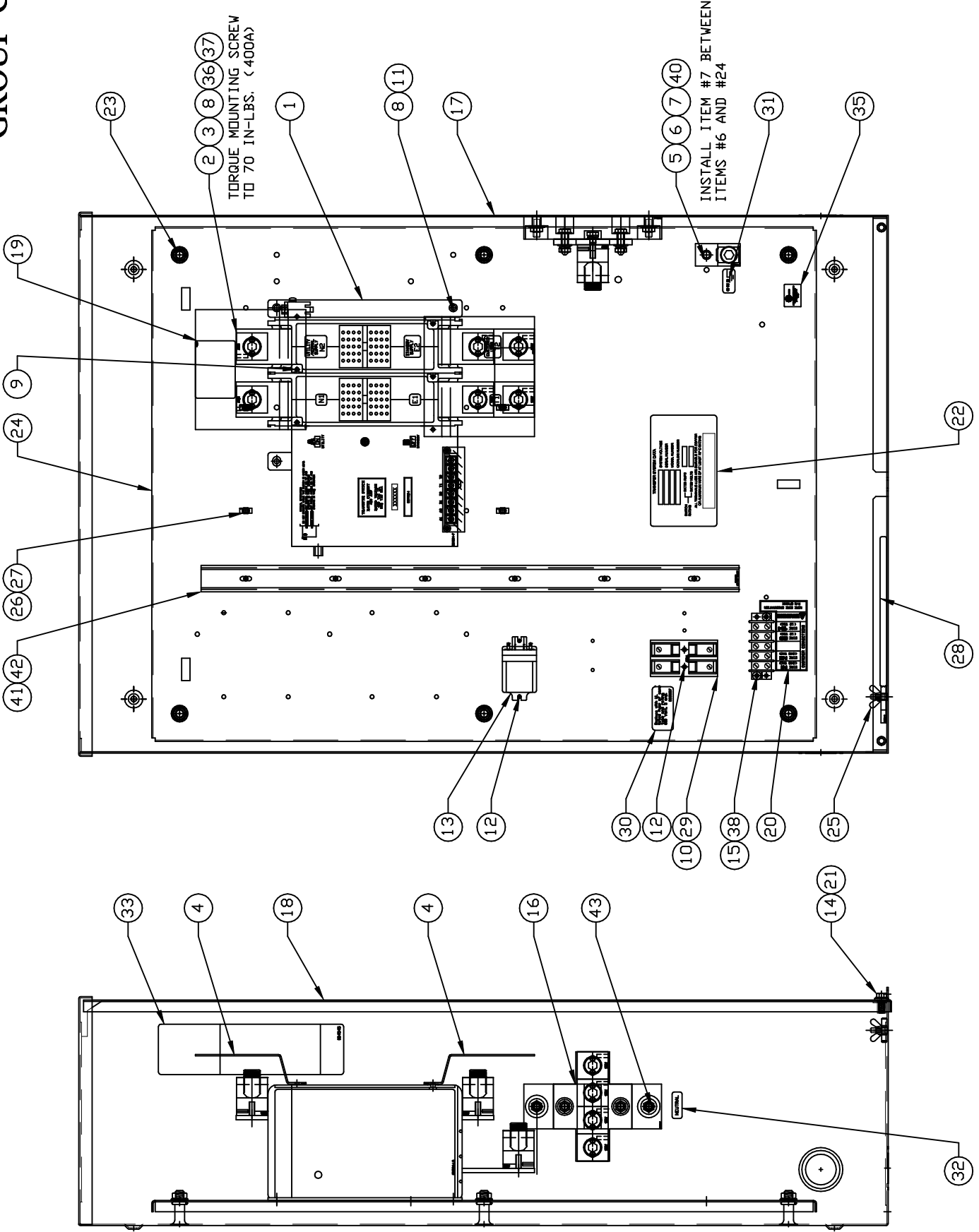
ITEM	PART #	QTY.	DESCRIPTION
1	0D7295	1	XFER SW-W 400A600V3P
2	0A7822	9	LUG SLDLSS 600/250-1/0X1/4-28
3	026902	5	SCREW HHTT #8-32 X 1/4 CZ
4	0C7907F	2	COVER LUG 3P 300/400AMP
5	024526	1	SCREW HHTT 5/16-18 X 3/4 CZ
6	057329	1	LUG SLDLSS 350-#6 X 13/32 AL/CU
7	027482	1	WASHER SHAKEPROOF EXT 5/16 STL
8	022097	12	WASHER LOCK M6-1/4
9	0C8275	4	SCREW PPHM DSEMS M4-7 X 10 ZNC
10 **	0D2806	1	FUSEBLOCK 30A 600V 2 POS W/SQ
11	090388	3	SCREW HHTT M6-1.0 X 12 ZINC
12	0A1495	6	SCREW HHTT M4-0.7 X 10 BP
13 **	063617	1	RELAY PNL 12VDC DPDT 10A@240VA
14	047411	2	SCREW HHC M6-1.0 X 16 G8.8
15	0A1661	2	RIVET POP .156 X .675 AL
16	0F4034	1	ASSY TERMINAL BLOCK 300-400A
17	0F59350ST14	1	ENCL RTS 3R 24X36X10 08GRAY
18	0F59390ST14	1	COVER, NEMA 3R XFER SW 08GRAY
19	0G3259	2	DECAL TERMINAL SHOCK HZD BI
20	0C2262	1	DECAL TERMINAL STRIP
21	0F6165	6	WASHER NYLON
22	0G5968F	1	DECAL,XFER SW NON 400A 120/208
	0G5968J	1	DECAL,XFER SW NON 400A 120/240
23	064101	6	NUT HEX FL WHIZ 3/8-16
24	0F59400ST14	1	SUBPLATE 24/36 ENCL RTS 08GRAY
25	087680	1	NUT WING M6-1.0
26	063378	6	HOLDER CABLE TIE
27	064761	6	TIE WRAP UL 5.6 X .10 NATL
28	063321	1	HANDLE XFER SWITCH 1-400A
29	073590A	2	FUSE 5A X BUSS
30	0D3587	1	DECAL FUSE REPLACEMENT
31	067210A	1	DECAL GROUND LUG
32	0A9457	1	DECAL NEUTRAL
33	0D4545	1	DECAL MANUAL OPERATION
34 *	0F6129	1	DECAL TEST SEQUENCE 3P TS 3R
35	081221	1	DECAL-UL LIST HSB
36	0A2284	2	SCREW SWAGE #8-32 X 1/2 ZYC
37	063306	1	POWER MONITOR 3-PHASE 160-240V
38 **	066972	1	SOCKET RELAY OCTAL 8P 300V-10A
39 ***	0G1579B	1	DECAL SIEMENS 3.2" X 11.8"
40	022129	1	WASHER LOCK M8-5/16
41	091472	1	DUCT WIRING 1 X 1.5 (24" LG)
42	091472A	1	COVER WIRE DUCT 1 IN (24" LG)
43	067989	2	NUT HEX FL WHIZ M8-1.25
44	0A8261	9	SCREW HHC 1/4-28 X 5/8 .625TH
45	022473	9	WASHER FLAT 1/4-M6 ZINC
46 **	048850	1	BLOCK TERM 20A 5 X 6 X 1100V
47	0F6273B	1	HARNESS 400A 3POLE 3PHASE (NOT SHOWN)

\* CENTER DECAL ON INSIDE OF THE COVER (ITEM #18)

\*\* ITEMS INCLUDED WITH HARNESS

\*\*\* INSTALL ON FRONT OF THE COVER (ITEM 18)

# GROUP C



TORQUE MOUNTING SCREW TO 70 IN-LBS. (<400A)

INSTALL ITEM #7 BETWEEN ITEMS #6 AND #24

HANDLE P/N 063321 SUPPLIED W/SWITCH

EXPLODED VIEW:  
TRANSFER SWITCH 400A 120/240V 1PH  
DRAWING #: 0G2607A

REVISION: H-3227-D  
DATE: 10/9/08

EXPLODED VIEW: TRANSFER SWITCH 400A 120/240V 1PH  
DRAWING #: 0G2607A

GROUP C

APPLICABLE TO:

ITEM	PART #	QTY.	DESCRIPTION
1	0D7294	1	XFER SW-W 400A600V2P
2	0A7822	6	LUG SLDLSS 600/250-1/0X1/4-28
3	026902	5	SCREW HHTT #8-32 X 1/4 CZ
4	0C7907J	2	COVER LUG 2P 300/400AMP
5	024526	1	SCREW HHTT 5/16-18 X 3/4 CZ
6	057329	1	LUG SLDLSS 350-#6 X 13/32 AL/CU
7	027482	1	WASHER SHAKEPROOF EXT 5/16 STL
8	022097	9	WASHER LOCK M6-1/4
9	0C8275	4	SCREW PPHM DSEMS M4-7 X 10 ZNC
10 **	0D2806	1	FUSEBLOCK 30A 600V 2 POS W/SQ
11	090388	3	SCREW HHTT M6-1.0 X 12 ZINC
12	0A1495	6	SCREW HHTT M4-0.7 X 10 BP
13 **	063617	1	RELAY PNL 12VDC DPDT 10A@240VA
14	047411	2	SCREW HHC M6-1.0 X 16 G8.8
15	0A1661	2	RIVET POP .156 X .675 AL
16	0F4034	1	ASSY TERMINAL BLOCK 300-400A
17	0F59350ST14	1	ENCL RTS 3R 24X36X10 08GRAY
18	0F59390ST14	1	COVER, NEMA 3R XFER SW 08GRAY
19	0G3259	2	DECAL TERMINAL SHOCK HZD BI
20	0C2262	1	DECAL TERMINAL STRIP
21	0F6165	6	WASHER NYLON
22	0G5968C	1	DECAL,XFER SW NON 400A 120/240
23	064101	6	NUT HEX FL WHIZ 3/8-16
24	0F59400ST14	1	SUBPLATE 24/36 ENCL RTS 08GRAY
25	087680	1	NUT WING M6-1.0
26	063378	4	HOLDER CABLE TIE
27	064761	4	TIE WRAP UL 5.6 X .10 NATL
28	063321	1	HANDLE XFER SWITCH 1-400A
29	073590A	2	FUSE 5A X BUSS
30	0D3587	1	DECAL FUSE REPLACEMENT
31	067210A	1	DECAL GROUND LUG
32	0A9457	1	DECAL NEUTRAL
33	0D4545	1	DECAL MANUAL OPERATION
34 *	0F6129	1	DECAL TEST SEQUENCE 3P TS 3R
35	081221	1	DECAL-UL LIST HSB
36	0A8261	6	SCREW HHC 1/4-28 X 5/8 .625TH
37	022473	6	WASHER FLAT 1/4-M6 ZINC
38 **	048850	1	BLOCK TERM 20A 5 X 6 X 1100V
39 ***	0G1579	1	DECAL SIEMENS 4.3" X 16.5"
40	022129	1	WASHER LOCK M8-5/16
41	091472	1	DUCT WIRING 1 X 1.5 (24" LG)
42	091472A	1	COVER WIRE DUCT 1 IN (24" LG)
43	067989	2	NUT HEX FL WHIZ M8-1.25
44	0F6273A	1	HARNES,400A 2POLE 1PHASE (NOT SHOWN)

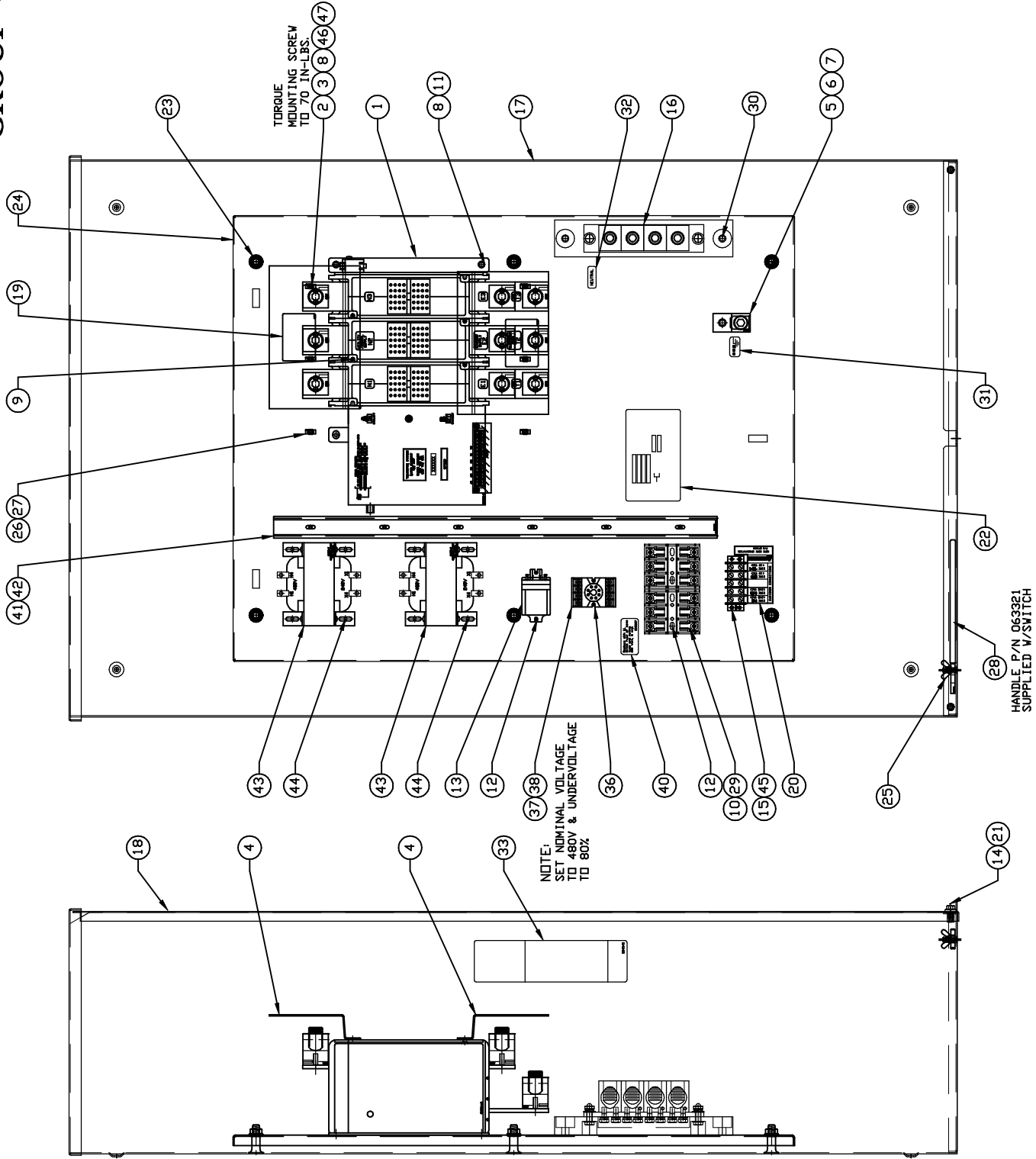
\* CENTER DECAL ON INSIDE OF THE COVER (ITEM #18)

\*\* ITEMS INCLUDED WITH HARNES

\*\*\* INSTALL ON FRONT OF THE COVER (ITEM #18)



# GROUP C



EXPLODED VIEW:  
400A 480V TRANSFER SWITCH  
DRAWING #: 0J1006A

## EXPLODED VIEW: 400A 480V TRANSFER SWITCH

DRAWING #: 0J1006A

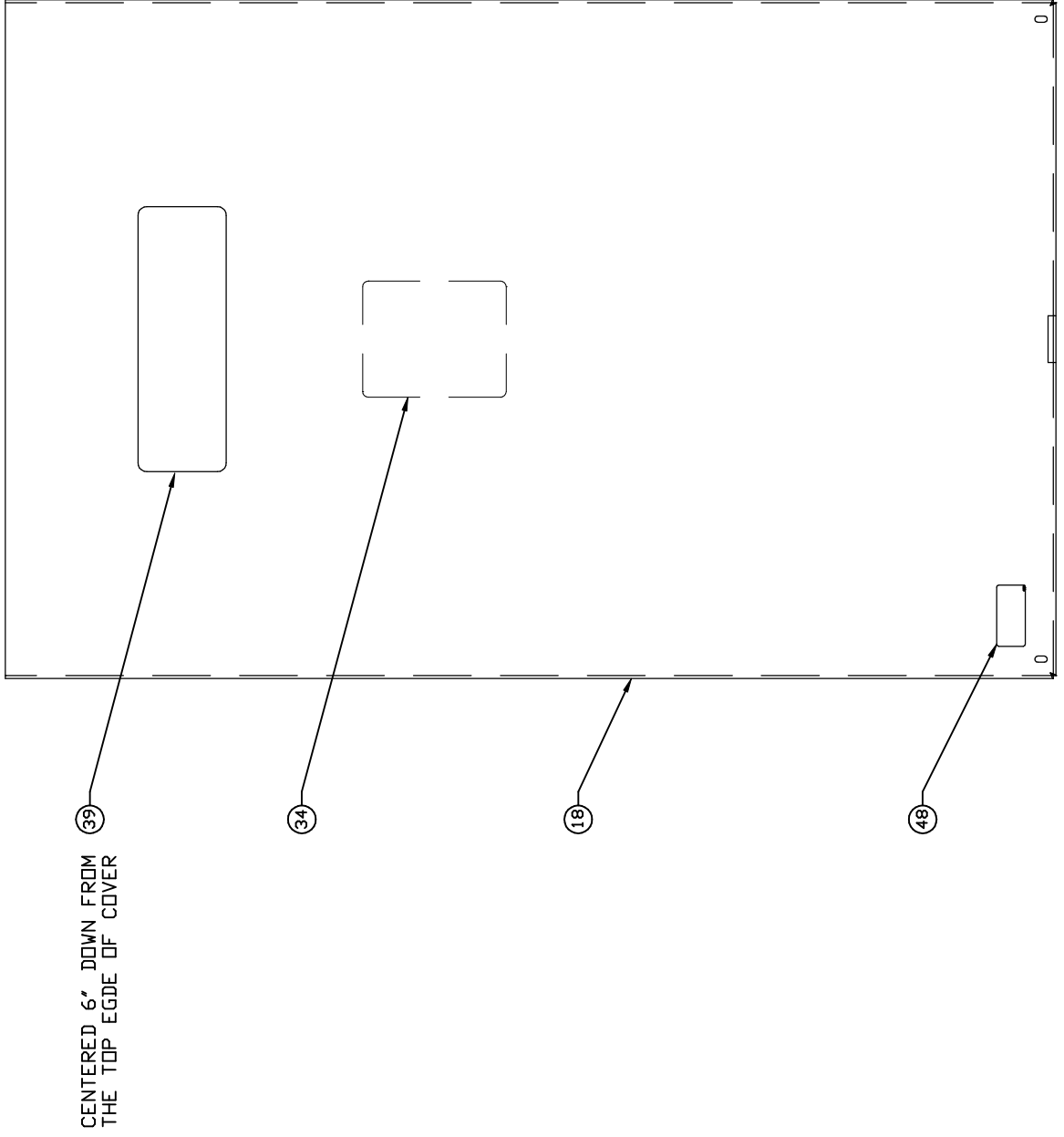
GROUP C

APPLICABLE TO:

ITEM	PART #	QTY.	DESCRIPTION
1	0D7295	1	XFER SW-W 400A600V3P
2	0A7822	9	LUG SLDLSS 600/250-1/0X1/4-28
3	026902	5	SCREW HHTT #8-32 X 1/4 CZ
4	0C7907F	2	COVER LUG 3P 400AMP
5	024526	1	SCREW HHTT 5/16-18 X 3/4 CZ
6	057329	1	LUG SLDLSS 350-#6 X 13/32 AL/CU
7	027482	1	WASHER SHAKEPROOF EXT 5/16 STL
8	022097	3	WASHER LOCK M6-1/4
9	0C8275	4	SCREW PPHM DSEMS M4-7 X 10 ZNC
10*	0D2572	2	FUSEBLOCK 30A 600V 3 POS W/SQ
11	090388	3	SCREW HHTT M6-1.0 X 12 ZINC
12	0A1495	6	SCREW HHTT M4-0.7 X 10 BP
13*	063617	1	RELAY PNL 12VDC DPDT 10A@240VA
14	085296	2	SCREW HHC 1/4-20 X 1/2 SS
15	0A1661	2	RIVET POP .156 X .675 AL
16	0C2162	1	ASSY NEUTRAL BLOCK 300-400A
17	0H15660ST14	1	WELDMENT 400A HV TRANSFER SW
18	0F59480ST14	1	COVER,3R 400 AMP XFRSW ENC GRY
19	0C8308	2	DECAL TERMINAL SHOCK HAZARD
20	0C2262	1	DECAL TERMINAL STRIP
21	0F6165	4	WASHER M6 NYLON INT HEX
22	PER MODEL	1	DECAL,XFER SW NON 400A 277/480
23	064101	6	NUT HEX FL WHIZ 3/8-16
24	0J1003	1	SUBPLATE 400A RTS HV
25	087680	1	NUT WING M6-1.0
26	063378	4	HOLDER CABLE TIE
27	064761	4	TIE WRAP UL 5.6 X .10 NATL
28	063321	1	HANDLE XFER SWITCH 1-400A
29	073590A	6	FUSE 5A X BUSS
30	083512	1	SCREW HHTT M8-1.2 X 16 YC
31	067210A	1	DECAL GROUND LUG
32	0A9457	1	DECAL NEUTRAL
33	0D4545	1	DECAL MANUAL OPERATION
34	0J2320	1	DECAL TEST SEQUENCE 3P TS 3R
35	0J1774	1	HARNES 400A 3 POLE RTS KVOLT (NOT SHOWN)
36	0C4981	2	SCREW PHTT #8-32 X 1 ZYC
37	063306	1	POWER MONITOR 3-PHASE 208Y
38*	0F6760	1	SOCKET RELAY 8P 600V-10A
39	PER MODEL	1	DECAL TRANSFER SWITCH RTS
40	0D3587	1	DECAL, FUSE REPLACEMENT
41	091472	2'	DUCT WIRING 1 X 1.5 (24" LG)
42	091472A	2'	COVER WIRE DUCT 1 IN (24" LG)
43	064126	2	TRANSFRM 240/480V-120/240V
44	056893	8	SCREW CRIMPTITE 10-24 X 1/2
45*	0H1605	1	BLOCK TERM 20A 5 X 6 X 1100V
46	0A8261	18	SCREW HHC 1/4-28 X 5/8 .625TH
47	022473	18	WASHER FLAT 1/4-M6 ZINC
48	0G3274	1	DECAL LIVE CIRCUIT ENG/FRN/SPN

\* ITEMS INCLUDED WITH HARNESS

# GROUP C



EXPLODED VIEW: 400A 480V TRANSFER SWITCH

DRAWING #: 0J1006A

APPLICABLE TO:

GROUP C

ITEM	PART #	QTY.	DESCRIPTION
------	--------	------	-------------

THIS PAGE IS LEFT INTENTIONALLY BLANK