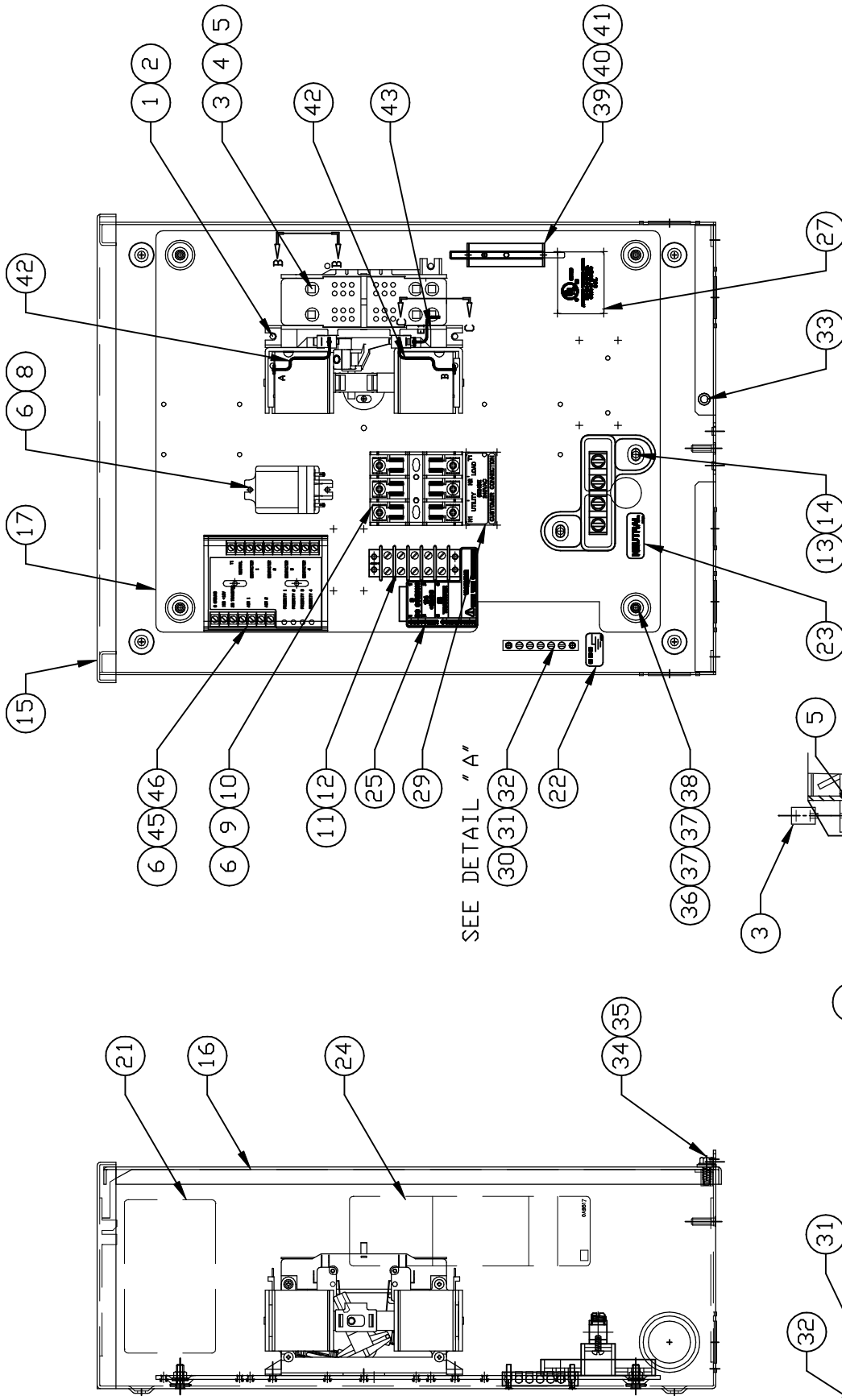
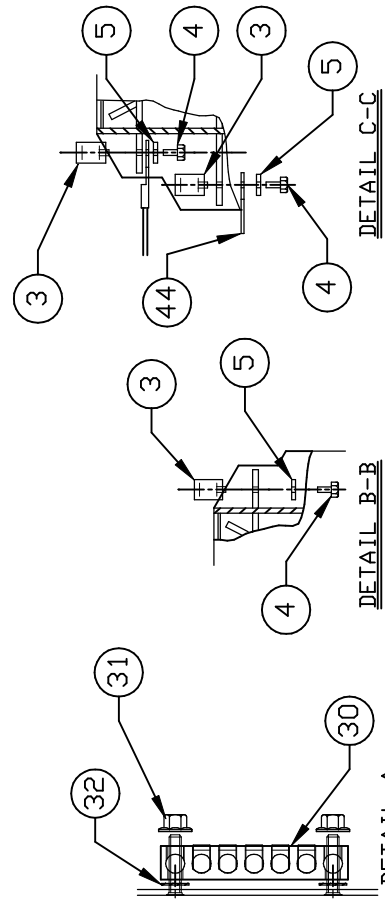


GROUP C



SEE DETAIL "A"



DETAIL A
(GROUND LUG ASSEMBLY)

DETAIL B-B
(POWER TERMINAL LUG ASSEMBLY)
NOTE: TORQUE ITEM #4 TO 24-30 IN. LBS

DETAIL C-C

EXPLODED VIEW:
100A 120/240V 2 POLE
DRAWING #: 0H7262A

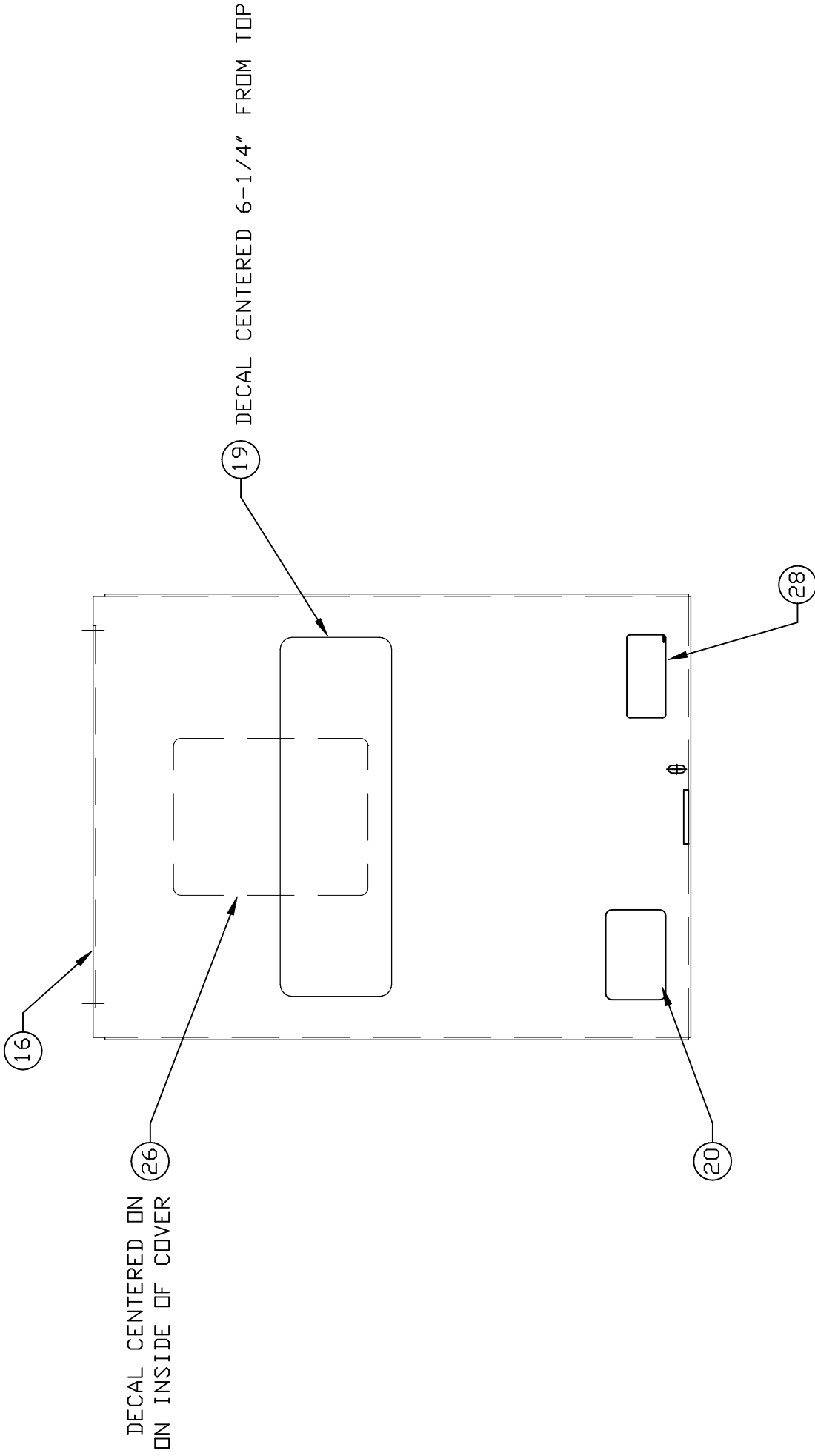
APPLICABLE TO:

ITEM	PART #	QTY.	DESCRIPTION
1	0C2237	1	TR SW-HSB 100A 2P 250V
2	074908	4	SCREW HHTT M5-0.8 X 10 BP
3	077033	6	LUG SLDLSS 1/0-#14X9/16 AL/CU
4	0G7624	6	SCREW PPHM#10-32 X 5/16
5	022152	6	WASHER, LOCK # 10
6	0A1495	6	SCREW HHTT M4-0.7 X 10 BP
7	0H7258	1	WIRING HARNESS HSB (NOT SHOWN)
(2) 8	063617	1	RELAY PNL 12VDC DPDT
(2) 9	0D2572	1	FUSEBLOCK 30A 600V 3 POLE
10	073590A	3	FUSE 5A X BUSS HLDR73591
(2) 11	0H1605	1	BLOCK, TERM 20A 5 X 6
12	0A1661	2	RIVET, P OP .156 X .67
13	0E3717	1	ASS'Y NEUTRAL BLOCK 100A
14	090388	2	SCREW HHTT M6-1.0 X 12 MM
15	0G51590AL14	1	ENCLOSURE, 100/200A TRANSFER SWITCH
16	0G51740AL14	1	COVER, TRANSFER SWITCH
17	0G55920GS0R	1	SUBPLATE, 100/200A XFER SW
19	PER MODEL	1	DECAL, FRONT COVER ATS NEMA3R
20	0H7274	1	DECAL, 2008 NEC COMPLIANCE
21	0G5968A	REF	DECAL, XFER SW NON 100A 120/240
	0H8062A	REF	DECAL, XFER SW NON 100A 120/240
	0J3806A	REF	DECAL, XFER SW NON 100A 120/240
22	067210A	1	DECAL, GROUNDING LUG
23	0A9457	1	DECAL, NEUTRAL
24	0A9517	1	DECAL, MANUAL 5A FUSE
25	0H7917	1	DECAL, TERMINAL STRIP
26	077036D	1	DECAL, TEST SEQUENCE
27	081221	1	DECAL, UL LIST HSB
28	0G3274	1	DECAL, LIVE CIRCUIT ENG/FRN/SPN
29	0H6389	1	DECAL, UTILITY LOAD SENSE 240V
30	0E6523	1	GROUND BAR (5) 4-14 AWG CONN
31	0F7806	2	NUT HEX FL WHIZ M4-0.7
32	026579	2	WASHER SHAKEPROOF EXT #8 STEEL
33	058000E	1	NUT TRIC 1/4-20 X .525
34	085296	1	SCREW HHC 1/4-20 X 1/2 SS
35	0F6165	1	WASHER M6 NYLON INT HEX
36	085889	4	NUT HEX 1/4-20 SS
37	022473	8	WASHER FLAT 1/4-M6 ZINC
38	022097	4	WASHER LOCK M6-1/4
39	0E6193	1	BRACKET, ARM EXTENDER
(1) 40	0E6155	1	ARM EXTENDER PIN
41	0D6162	2	RIVET POP .156 X .362 AL
42	0E6303	2	WIRE-A
43	0E6303C	1	WIRE-E1
44	074138	1	LUG DIS QK NIS 10X45 DEG BR/T
45	0H7376A	1	ASSY PCB AC LOAD CONTROLLER
46	0H7270	1	CHANNEL SNAPTRACK 76.2 X 101.2

(1) SUPPLIED WITH TRANSFER SWITCH ITEM #1

(2) SUPPLIED WITH HARNESS (P/N 0H7258)

GROUP C



EXPLODED VIEW:
100A 120/240V 2 POLE
DRAWING #: 0H7262A

EXPLODED VIEW: 100A 120/240V 2 POLE

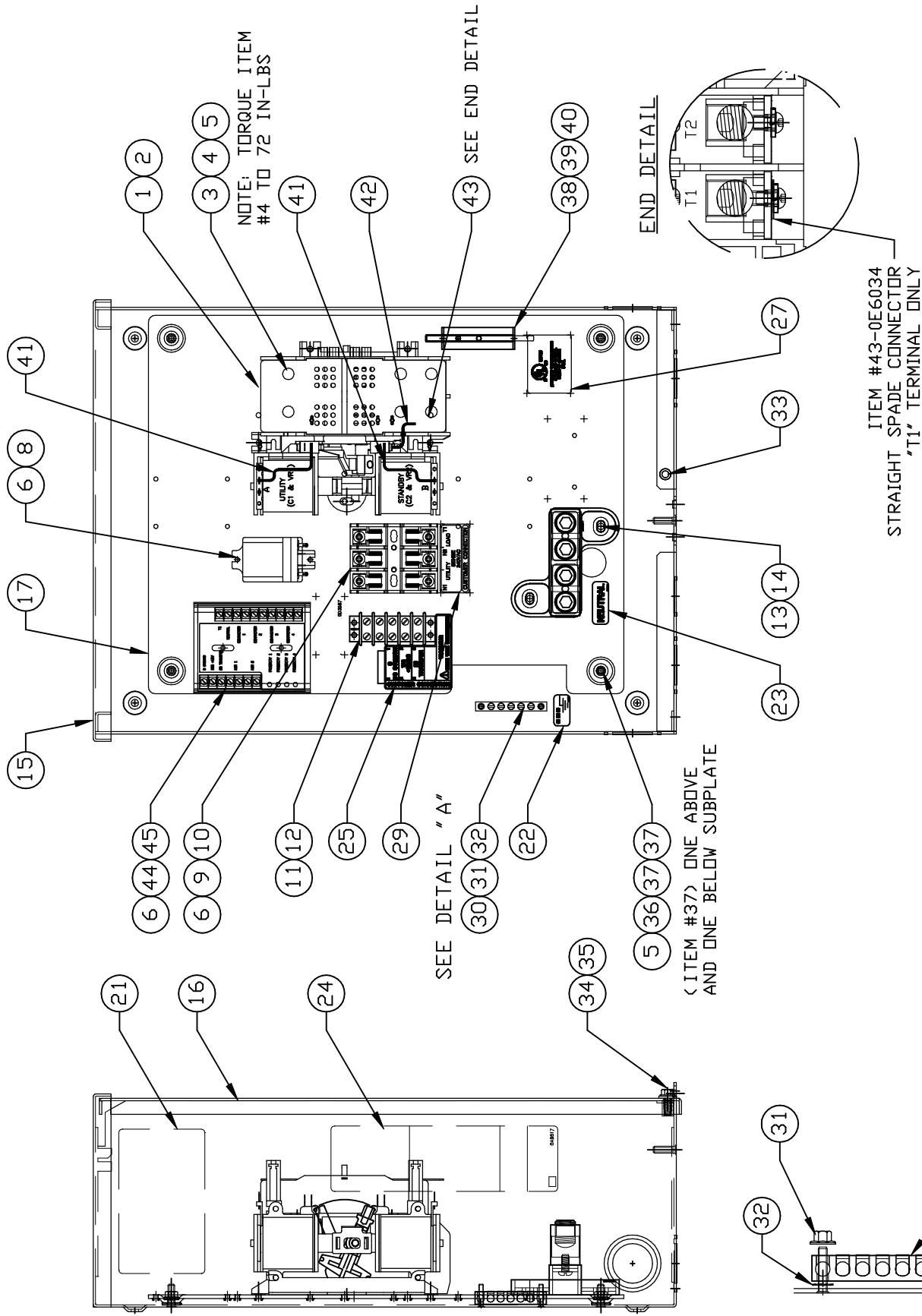
DRAWING #: 0H7262A

APPLICABLE TO:

GROUP C

THIS PAGE IS LEFT INTENTIONALLY BLANK

GROUP C



EXPLODED VIEW:
ASSEMBLY DWG 2-POLE 200A 120/240V
DRAWING #: 0H7263A

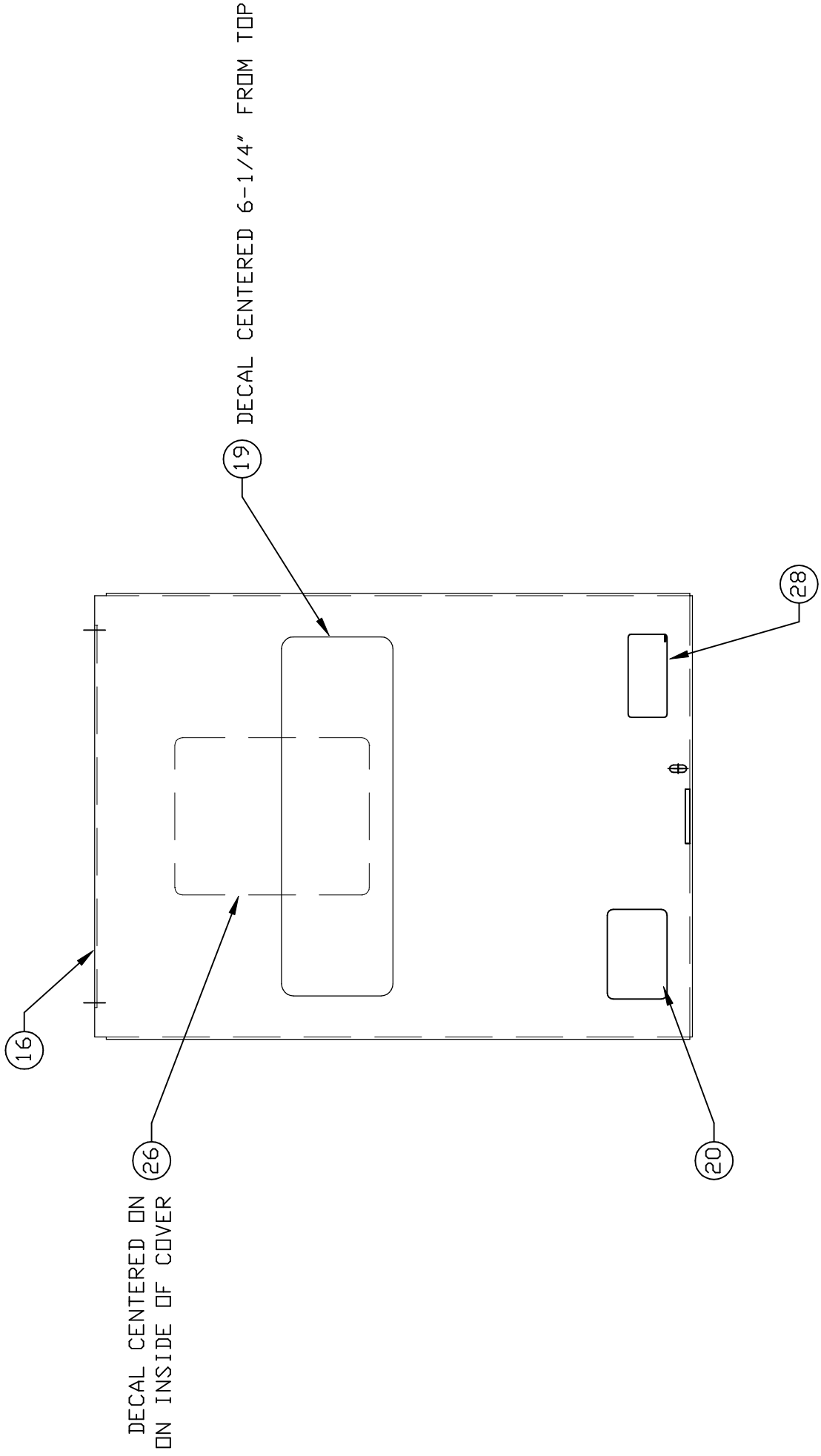
APPLICABLE TO:

ITEM	PART #	QTY.	DESCRIPTION
1	0D9618	1	XFRSW HSB 200A 2P 250V
2	074908	5	SCREW HHTT M5-0.8 X 10 BP
3	0E3375	6	LUG SLDLSS 250-#6 AL/CU
4	0F1252	6	SCREW BHSC 1/4-20 X 3/8
5	022097	10	WASHER LOCK M6-1/4
6	0A1495	6	SCREW HHTT M4-0.7 X 10 BP
7	0H7258	1	WIRING HARNESS HSB (NOT SHOWN)
(2) 8	063617	1	RELAY PNL 12VDC DPDT
(2) 9	0D2572	1	FUSEBLOCK 30A 600V 3 POLE
10	073590A	3	FUSE 5A X BUSS HLDR73591
(2) 11	0H1605	1	BLOCK, TERM 20A 5 X 6
12	0A1661	2	RIVET, POP .156 X .67
13	0E3717A	1	ASS'Y NEUTRAL BLOCK 200A
14	090388	2	SCREW HHTT M6-1.0 X 12 MM
15	0G51590AL14	1	ENCLOSURE, 100/200A TRANSFER SWITCH
16	0G51740AL14	1	COVER, TRANSFER SWITCH
17	0G55920GSOR	1	SUBPLATE, 100/200A XFER SW
19	PER MODEL	1	DECAL, FRONT COVER ATS NEMA3R
20	0H7274	1	DECAL, 2008 NEC COMPLIANCE
21	0G5968B	REF	DECAL, XFER SW NON 200A 120/240
	0H8062B	REF	DECAL, XFER SW NON 200A 120/240
	0J3806B	REF	DECAL, XFER SW NON 200A 120/240
22	067210A	1	DECAL, GROUNDING LUG
23	0A9457	1	DECAL, NEUTRAL
24	0A9517	1	DECAL, MANUAL 5A FUSE
25	0H7917	1	DECAL, TERMINAL STRIP
26	0E6190	1	DECAL, TEST SEQUENCE
27	081221	1	DECAL, UL LIST HSB
28	0G3274	1	DECAL, LIVE CIRCUIT ENG/FRN/SPN
29	0H6389	1	DECAL, UTILITY LOAD SENSE 240V
30	0E6523	1	GROUND BAR (5) 4-14 AWG CONN
31	0F7806	2	NUT HEX FL WHIZ M4-0.7
32	026579	2	WASHER SHAKEPROOF EXT #8 STEEL
33	058000E	1	NUT TRIC 1/4-20 X .525
34	085296	1	SCREW HHC 1/4-20 X 1/2 SS
35	0F6165	1	WASHER M6 NYLON INT HEX
36	085889	4	NUT HEX 1/4-20 SS
37	022473	8	WASHER FLAT 1/4-M6 ZINC
38	0E6193	1	BRACKET, ARM EXTENDER
(1) 39	0E6155	1	ARM EXTENDER PIN
40	0D6162	2	RIVET POP .156 X .362 AL
41	0E6303	2	WIRE-A
42	0E6303B	1	WIRE-E1
43	0E6034	1	STRAIGHT SPADE CONNECTOR
44	0H7376A	1	ASSY PCB AC LOAD CONTROLLER
45	0H7270	1	CHANNEL SNAPTRACK 76.2 X 101.2

(1) SUPPLIED WITH TRANSFER SWITCH ITEM #1

(2) SUPPLIED WITH HARNESS (P/N 0H7258)

GROUP C



DECAL CENTERED ON
ON INSIDE OF COVER

EXPLODED VIEW:
ASSEMBLY DWG 2-POLE 200A 120/240V
DRAWING #: 0H7263A

EXPLODED VIEW: ASSEMBLY DWG 2-POLE 200A 120/240V

DRAWING #: 0H7263A

GROUP C

APPLICABLE TO:

THIS PAGE IS LEFT INTENTIONALLY BLANK