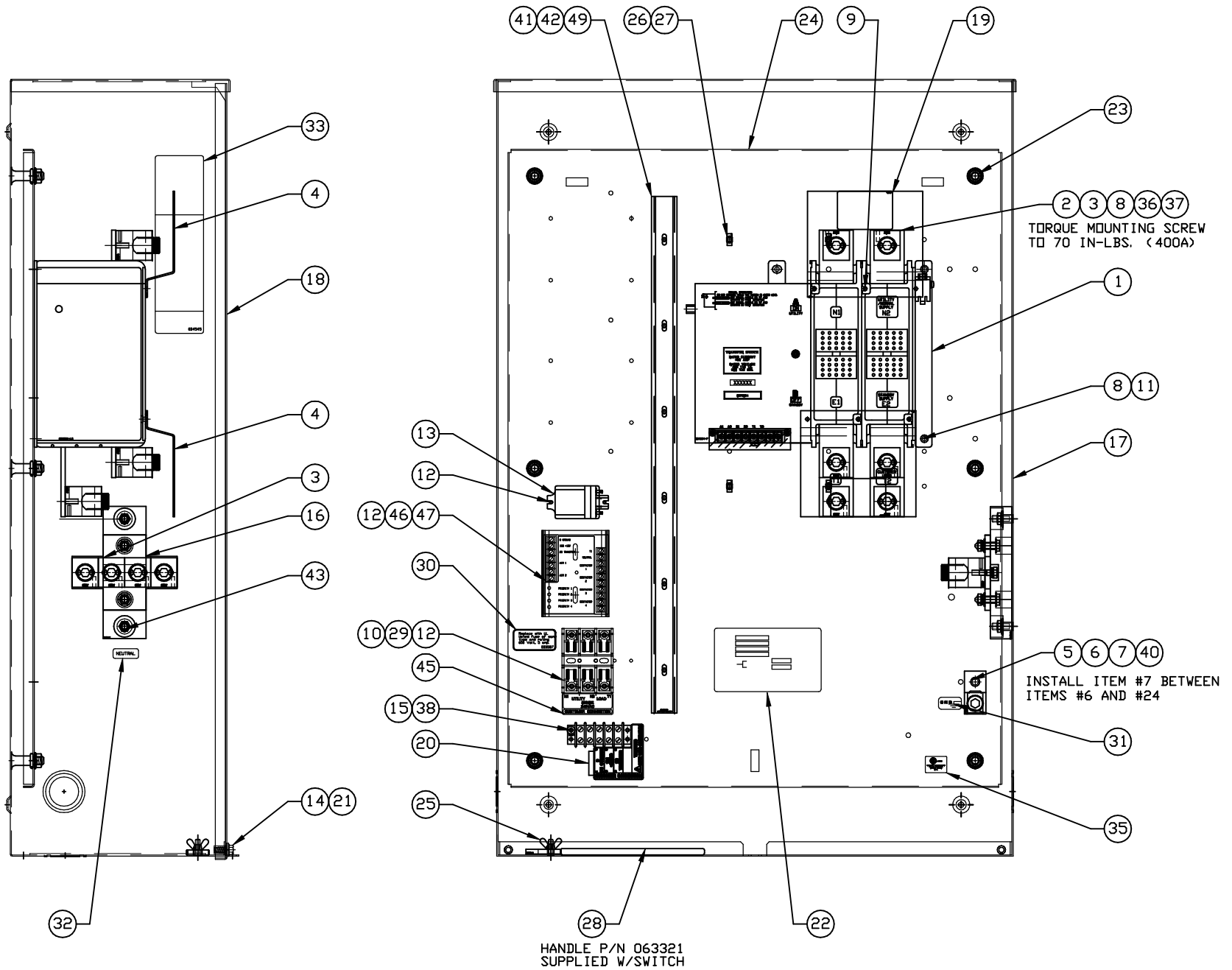
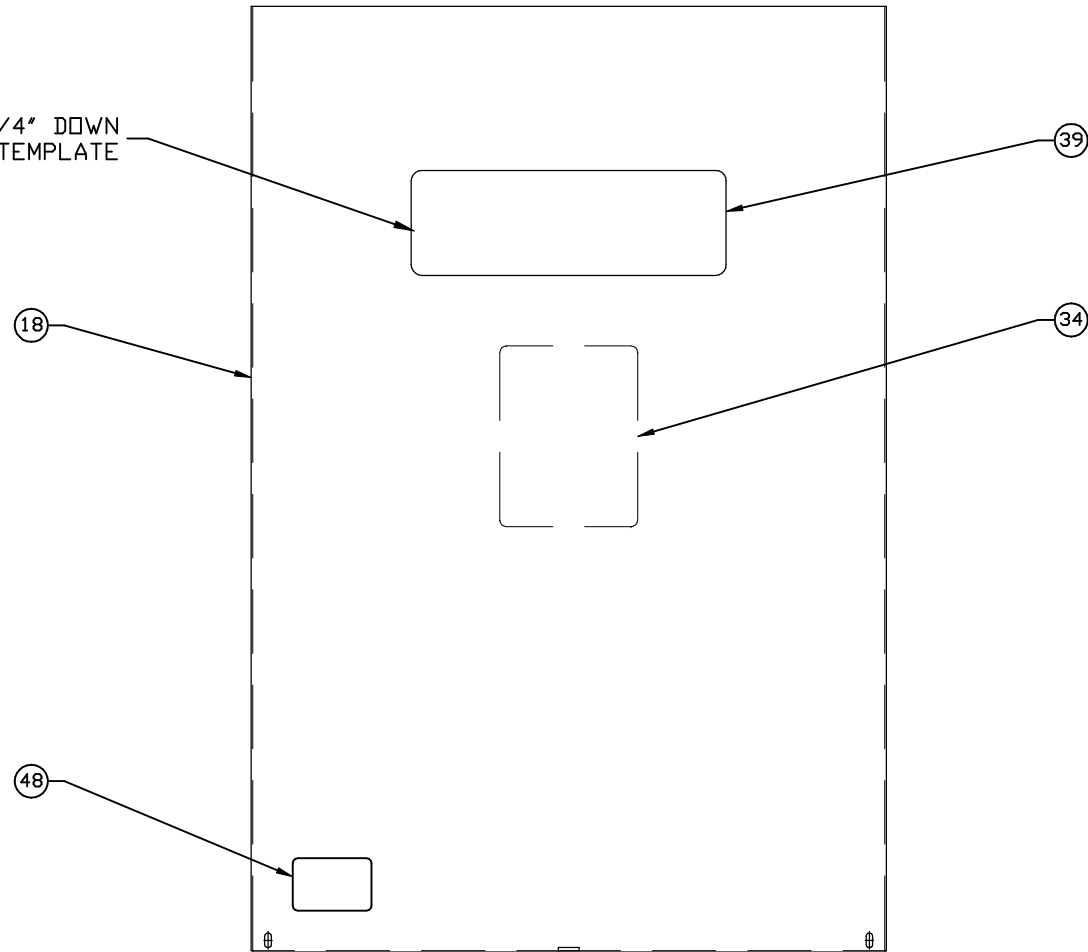


GROUP C



CENTER DECAL APPROXIMATELY 6-1/4" DOWN FROM TOP OF COVER USING ASSEMBLY TEMPLATE



EXPLODED VIEW: TRANSFER SWITCH 400A 120/240V 1PH
DRAWING #: 0H7267A

GROUP C

APPLICABLE TO:

ITEM	PART #	QTY.	DESCRIPTION
1	0D7294	1	XFER SW-W 400A600V2P
2	0A7822	6	LUG, SLDLS 600/250-1/0X1/4-28
3	026902	6	SCREW TAPTITE #8-32X1/4 BP
4	0C7907J	2	COVER LUG 2P 400AMP
5	024526	1	SCREW HHTT 5/16-18 X 3/4 CZ
6	057329	1	LUG, SOLDERLESS 350-#6X13/32 AL/CU
7	027482	1	WASHER SHAKEPROOF EXT 5/16 STEEL
8	022097	15	WASHER LOCK M6-1/4
9	0C8275	4	SCREW PPHM DSEMS M4-.7 X 10 ZNC
(1)10	0D2572	1	FUSEBLOCK 30A 600V 3POS W/SQ
11	090388	3	SCREW TAPTITE M6-1.0 X 12 MM
12	0A1495	6	SCREW TAPTITE M4-.7 X 10 MM
(1)13	063617	1	RELAY PNL 12VDC DPDT 10A@240VA
14	047411	2	SCREW HHC M6-1.0 X 16 G8.8
15	0A1661	2	RIVET, POP
16	0F4034	1	ASSY. NEUTRAL BLOCK 300/400A
17	0F59350ST14	1	ENCLOSURE RTS 3R 24X36X10 GY4
18	0F59390ST14	1	COVER, NEMA 3R T/S ENCL GY4
19	0G3259	2	DECAL TERMINAL SHOCK HZD BI
20	0H7917	1	DECAL TERMINAL STRIP
21	0F6165	2	WASHER, NYLON
22	0G5968C	1	DECAL DATA XFER SW
	0H8062C	1	DECAL DATA XFER SW
	0J3806C	1	DECAL DATA XFER SW
23	064101	6	NUT HEX FL WHIZ 3/8-16
24	0F59400ST14	1	SUBPLATE 24/36 ENCL RTS GY4
25	087680	1	NUT WING M6-1.0
26	063378	4	HOLDER CABLE TIE
27	064761	4	TIE WRAP UL 5.6" X .10" NATL
28	063321	1	HANDLE TRANSFER SWITCH 1-400A
29	073590A	3	FUSE 5A X BSS HLDLR73591
30	0D3587	1	DECAL, FUSE REPLACEMENT
31	067210A	1	DECAL GROUND LUG
32	0A9457	1	DECAL NEUTRAL
33	0D4545	1	DECAL MANUAL OPERATION
34	0F6129	1	DECAL, TEST SEQUENCE
35	081221	1	DECAL, UL NAMEPLATE
36	0A8261	12	SCREW, HHCS 1/4-28 X 5/8"
37	022473	12	WASHER, FLAT 1/4-6M ZINC
(1)38	0H1605	1	BLOCK TERM 20A 5 X 6 X 1100V
39	PER ORDER	1	DECAL, FRNT CVR RATS 3R NON
40	022129	1	WASHER LOCK M8-5/16
41	091472	2'	DUCT WIRING 1X1.5
42	091472A	2'	COVER WIRE DUCT 1 IN
43	067989	2	NUT HEX FL WHIZ M8-1.25
44	0H7260	1	HARNES 400A 2 POLE RTS (NOT SHOWN)
45	0H6389	1	DECAL, UTILITY LOAD SENSE 240V
46	0H7376A	1	ASSY PCB AC LOAD CONTROLLER
47	0H7270	1	CHANNEL SNAPTRACK 76.2 X 101.2
48	0H7274	1	DECAL 2008 NEC COMPLIANCE
49	091477	6	RIVET, WIRE DUCT MNT

(1) ITEMS INCLUDED WITH HARNESS