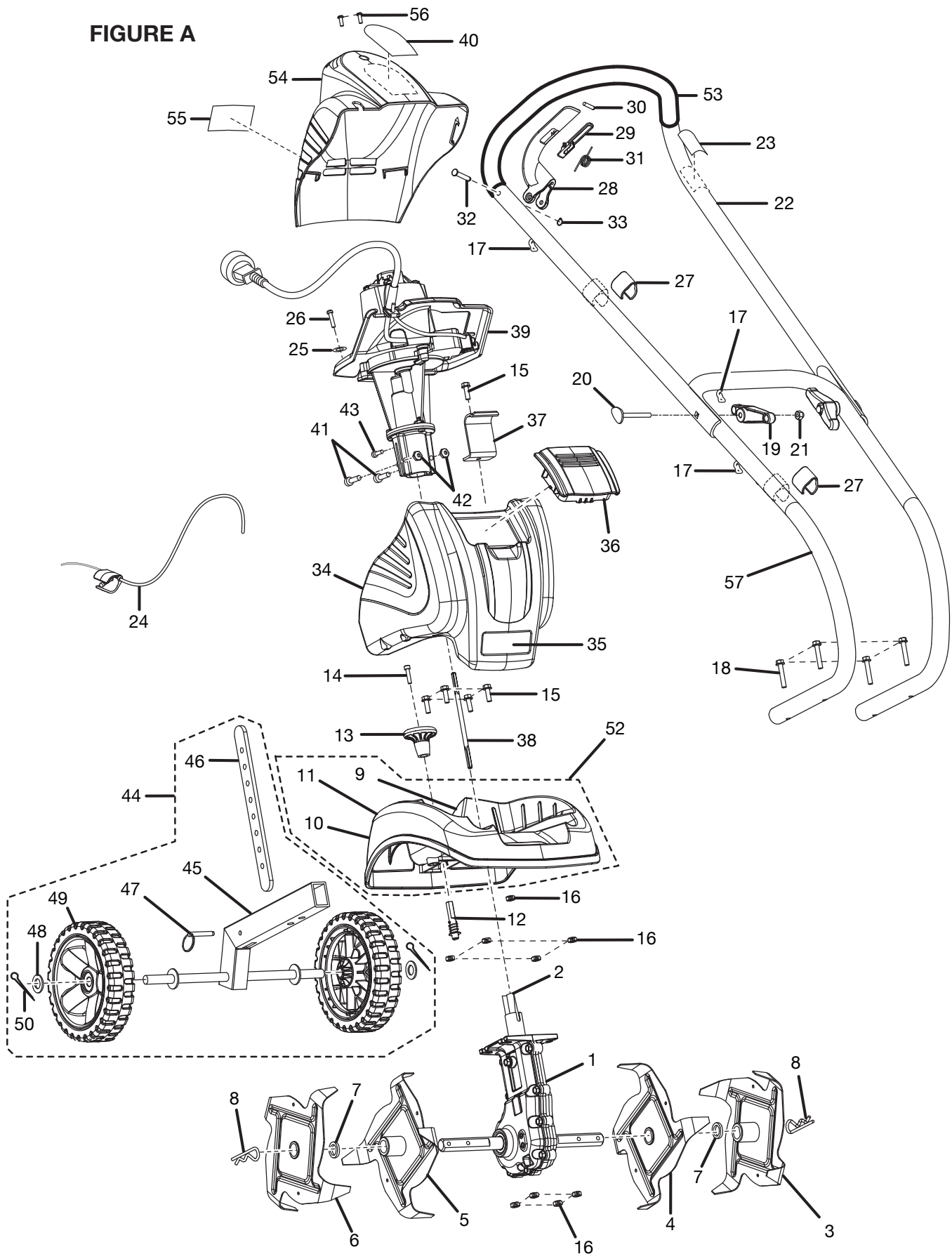


**RYOBI ELECTRIC CULTIVATOR  
MODEL NUMBER RY46501A**

**FIGURE A**



**RYOBI ELECTRIC CULTIVATOR  
MODEL NUMBER RY46501A**

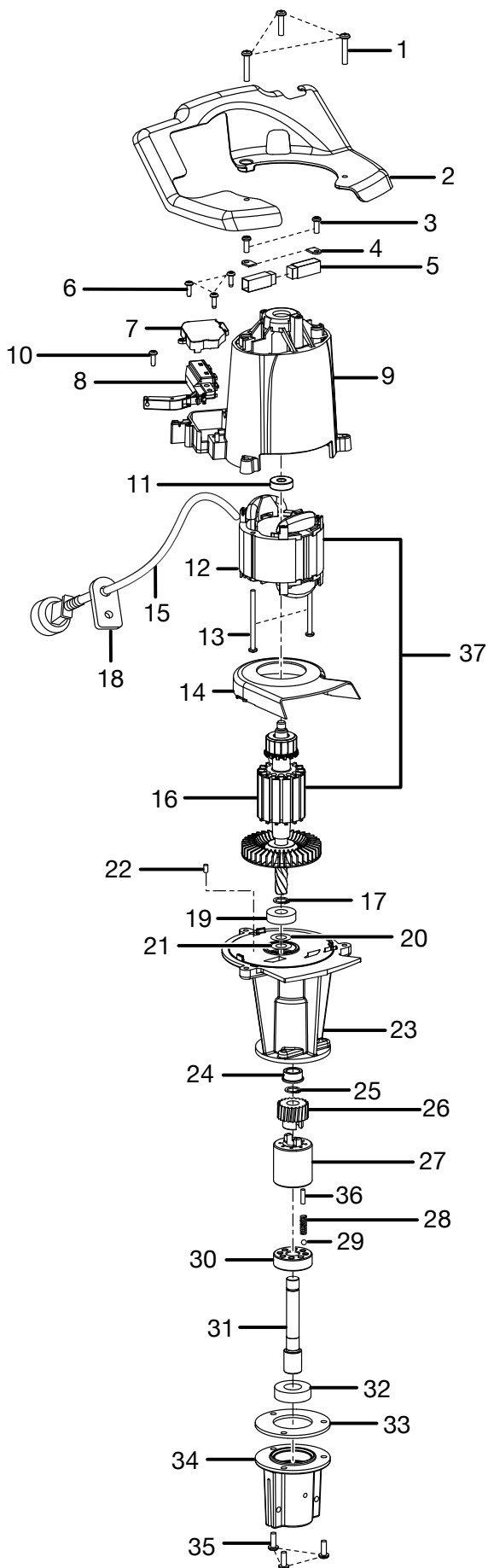
The model number will be found on a label attached to the motor housing. Always mention the model number in all correspondence regarding your **ELECTRIC CULTIVATOR** or when ordering repair parts.

**PARTS LIST FOR FIGURE A**

<b>KEY NO.</b>	<b>PART NUMBER</b>	<b>DESCRIPTION</b>	<b>QTY.</b>
1	220032001	GEAR BOX ASSY W/TUBE AND LINER.....	1
2	518279001	LINER-HELIX (47 mm) .....	1
3	308216002	TINE ASSEMBLY (A) .....	1
4	308216003	TINE ASSEMBLY (B) .....	1
5	308216004	TINE ASSEMBLY (C).....	1
6	308216005	TINE ASSEMBLY (D).....	1
7	900755001	FELT WASHER.....	2
8	638001004	CLEVIS CLIP.....	2
9	950119001	WARNING LABEL (BACK LEFT).....	1
10	950124002	WARNING LABEL (BACK RIGHT) .....	1
11	950119010	WARNING LABEL (FOOT) .....	1
12	308228001	RECEIVER RETAINER ASSEMBLY .....	1
13	518206001	KNOB.....	1
14	660713001	SCREW (M5 x 16 mm SOC. WASHER HD. CAP) .....	1
15	660643002	BOLT (1/4-20 x 1 in. HEX HD.).....	5
16	678132001	LOCK NUT (1/4-20) .....	9
17	700810001	HEAT SHRINK TUBING .....	3
18	660643001	BOLT (HANDLE) (1/4-20 x 1-1/2 in. HEX HD.).....	4
19	518190001	KNOB (1/4-20).....	2
20	660711002	CARRIAGE BOLT (1/4-20 x 2-1/4 in.) .....	2
21	678142001	NUT-ACORN, CENTERLOCK (1/4-20).....	2
22	308339002	HANDLE, UPPER ASSEMBLY W/GRIP AND LABEL (INC. KEY NOS. 17, 23 & 53)....	1
23	950124004	BOOM LABEL.....	1
24	308293001	THROTTLE CABLE ASSEMBLY .....	1
25	983788174	WASHER (FOR ATTACHING THROTTLE CABLE TO MOTOR).....	1
26	660734001	SCREW (M4 x 16 mm) (FOR ATTACHING THROTTLE CABLE TO MOTOR).....	1
27	518205001	CLIP .....	2
28	518280001	TRIGGER .....	1
29	518281001	LOCK OUT LEVER.....	1
30	638138001	PIN .....	1
31	638139001	SPRING .....	1
32	638132001	CLEVIS PIN.....	1
33	678135001	RETAINING RING.....	1
34	308217001	TANK, BALLAST ASSEMBLY (INC. KEY NO. 35) .....	1
35	950119004	LOGO LABEL.....	1
36	360992001	LID .....	1
37	638099001	MOUNTING BRACKET .....	1
38	620388001	DRIVE SHAFT .....	1
39	230128001	MOTOR AND PINION ASSEMBLY .....	1
40	950124003	LABEL, ELECTRIC AMP LOGO.....	1
41	660429001	SCREW (M5 x 19 mm SOC. HD. CAP).....	2
42	678213001	SQUARE NUT (M5).....	2
43	660371002	SCREW (8-16 x 1/2 in. PAN HD.).....	1
44	308213001	WHEEL/DRAW STAKE ASSEMBLY (INC. KEY NOS. 45, 46, 47, 48, 49 AND 50).....	1
45	308222001	FRAME ASSEMBLY .....	1
46	638017004	DRAG STAKE.....	1
47	638017003	HITCH PIN .....	1
48	638017002	WASHER.....	2
49	308236001	WHEEL ASSEMBLY .....	2
50	638635001	COTTER PIN.....	2
51	950124005	HANG TAG, WHEEL ASSEMBLY (NOT SHOWN).....	1
52	308367001	TINE SHIELD ASSEMBLY (INC. KEY NOS. 9, 10 AND 11).....	1
53	518053002	GRIP .....	1
54	308366001	REAR HOUSING ASSEMBLY (INC. KEY NOS. 40 & 55) .....	1
55	950124001	DATA LABEL .....	1
56	983638006	SCREW (M4 x 13 mm TF).....	2
57	308047002	LOWER HANDLE ASSEMBLY (INC. KEY NO. 17).....	1

**RYOBI ELECTRIC CULTIVATOR  
MODEL NUMBER RY46501A**

**FIGURE B**



**RYOBI ELECTRIC CULTIVATOR  
MODEL NUMBER RY46501A**

The model number will be found on a label attached to the motor housing. Always mention the model number in all correspondence regarding your **ELECTRIC CULTIVATOR** or when ordering repair parts.

**PARTS LIST FOR FIGURE B**

<b>KEY NO.</b>	<b>PART NUMBER</b>	<b>DESCRIPTION</b>	<b>QTY.</b>
1	983660021	SCREW (M5 x 26 mm).....	3
2	513361001	INNER HOUSING.....	1
3	968702009	SCREW (8-16 x 5/8 in. PAN HD.).....	2
4	630801001	BRUSH TUBE CLAMP.....	2
5	968173001	BRUSH TUBE ASSEMBLY.....	2
6	660164001	SCREW (M3.5 x 16 mm).....	3
7	513360001	SWITCH COVER.....	1
8	760245004	SWITCH, ON-OFF ASSEMBLY.....	1
9	513359001	MOTOR HOUSING.....	1
10	983645005	SCREW (M4 x 18 mm PAN HD.).....	1
11	990924001	BALL BEARING (NTN 608ZZ C3/1E).....	1
12	740763001	FIELD ASSEMBLY.....	1
13	660101004	SCREW (8-10 x 2-1/2 in. PAN HD.).....	2
14	513363001	FAN SHROUD.....	1
15	730377019	POWER CORD.....	1
16	740764001	ARMATURE ASSEMBLY.....	1
17	982897016	RETAINING RING.....	2
18	570569001	GROMMET.....	1
19	T690395001	BALL BEARING.....	1
20	900721001	FELT SEAL.....	1
21	900098001	FIBER WASHER RING.....	1
22	550339001	RUBBER PLUG.....	1
23	640958004	GEAR BOX.....	1
24	670058002	FLANGE BEARING.....	1
25	671829001	WASHER.....	1
26	610481001	GEAR.....	1
27	671739001	CLUTCH.....	1
28	671743001	SPRING.....	8
29	671400003	BALL (5.96 mm).....	8
30	670514002	CLUTCH PLATE.....	1
31	620403001	OUTPUT SHAFT.....	1
32	680769004	BALL BEARING (6003).....	1
33	901110001	GASKET.....	1
34	640958003	GEAR CASE.....	1
35	983660009	SCREW (M5 x 14 mm).....	3
36	690009001	PLUG (6 mm x 17 mm).....	8
37	290147007	MOTOR ASSEMBLY (INC. KEY NOS. 12 AND 16).....	1
	983000658	OPERATOR'S MANUAL (960994001)	
	983000690	REPLACEMENT PARTS LIST	
	6-15-10		
	(REV:09)		