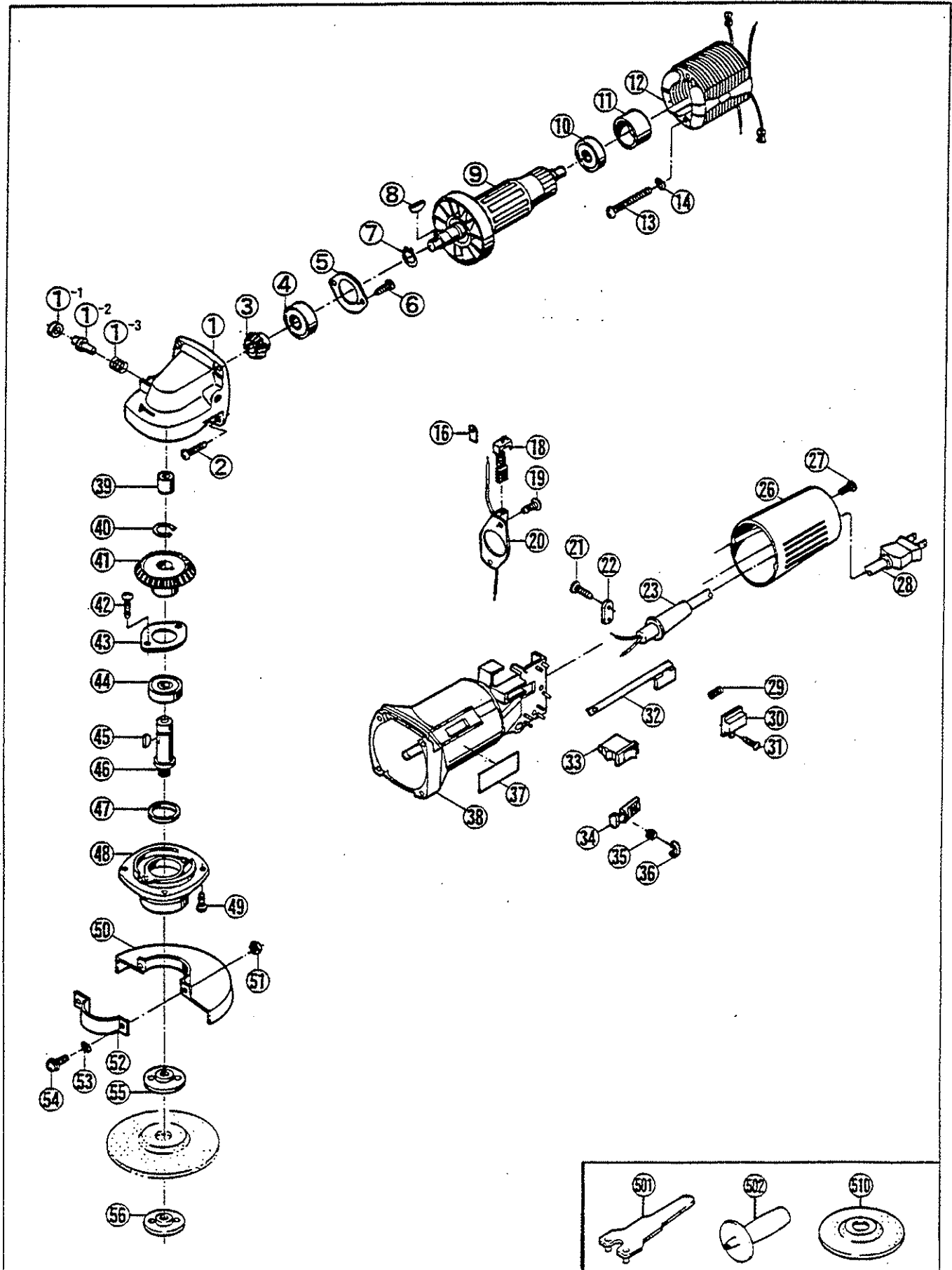


GRINDER

SG-1150, SG-1150C



PARTS LIST FOR AFTER SALES SERVICE MODEL SG1150, SG1150C

REF	PART NO.	DESCRIPTION	QTY	REF	PART NO.	DESCRIPTION	QTY
1	6080075	GEAR CASE	1	--	6550008	TOGGLE SWITCH SG1150C	1
1-1	6900227	COLLAR	1	34	6360114	SWITCH BUTTON	1
1-2	6120085	STOPPER PIN	1	35	6180095	COMPRESSION SPRING	1
1-3	6180091	COMPRESSION SPRING	1	36	6360115	SWITCH LOCK BUTTON	1
2	9060416	TAPPING SCREW (B) M4X16	4	37	6911008	NAME PLATE SG1150	1
3	6200062	PINION GEAR	1	--	6911014	NAME PLATE SG1150C	1
4	969235005	BALL BEARING #6200LLB	1	38	6800567	MOTOR HOUSING	1
5	6150635	BEARING CLAMP	1	39	9910609	NEEDLE BEARING	1
6	9040410	TAPPING SCREW (S) M4X10	2	40	9511200	RETAINING RING S-12	1
7	9511000	RETAINING RING S-10	1	41	6200061	BEVEL GEAR	1
8	6100077	WOODRUFF KEY	1	42	9040408	TAPPING SCREW (S) M4X8	2
9	6030664	ARMATURE	1	43	6150635	BEARING CLAMP	1
10	9840627	BALL BEARING #627LLB	1	44	9846201	BALL BEARING #6201LLB	1
11	6370071	BEARING COVER	1	45	6100077	WOODRUFF KEY	1
12	6500612	FIELD COIL	1	46	6110064	GEAR SHAFT	1
13	9060460	TAPPING SCREW (B) M4X60	2	47	6900231	FELT WASHER	1
14	9550400	SPRING WASHER M4	2	48	6820258	GEAR CASE COVER	1
16	6570035	INSULATOR	2	49	9040412	TAPPING SCREW (S) M4X12	4
18	6541173	CARBON BRUSH SET	1	50	6020079	WHEEL GUARD	1
19	9060408	TAPPING SCREW (B) M4X8	2	51	9300500	HEX. NUT M5	2
20	6570098	BRUSH HOLDER	1	52	6150632	FIXING PLATE	1
21	9060416	TAPPING SCREW (B) M4X16	2	53	9570500	WASHER	2
22	6560055	CORD CLAMP	1	54	9000516	PHILLIPS PAN SCREW M5X16	2
23	6560131	CORD HOLDER	1	55	6940231	FLANGE	1
26	6800575	HOUSING COVER	1	56	6940265	CLAMP NUT	1
27	9060412	TAPPING SCREW (B) M4X12	1	--	6560051	SPRING CONNECTOR	1
28	6520331	CORD ASS'Y AWG18X2X2	1				
29	6180094	COMPRESSION SPRING	1			STANDARD ACCESSORIES	
30	6360112	SWITCH COVER	1	501	6240403	LOCK-NUT WRENCH 35	1
31	9060412	TAPPING SCREW (B) M4X12	1	502	6830679	SIDE HANDLE SG1150	1
32	6360109	SWITCH LEVER	1	--	6830539	SIDE HANDLE SG1150C	1
33	6550175	CURVETTE SWITCH SG1150	1	510	4680102	GRINDING WHEEL #24	1

SERVICE NOTES: