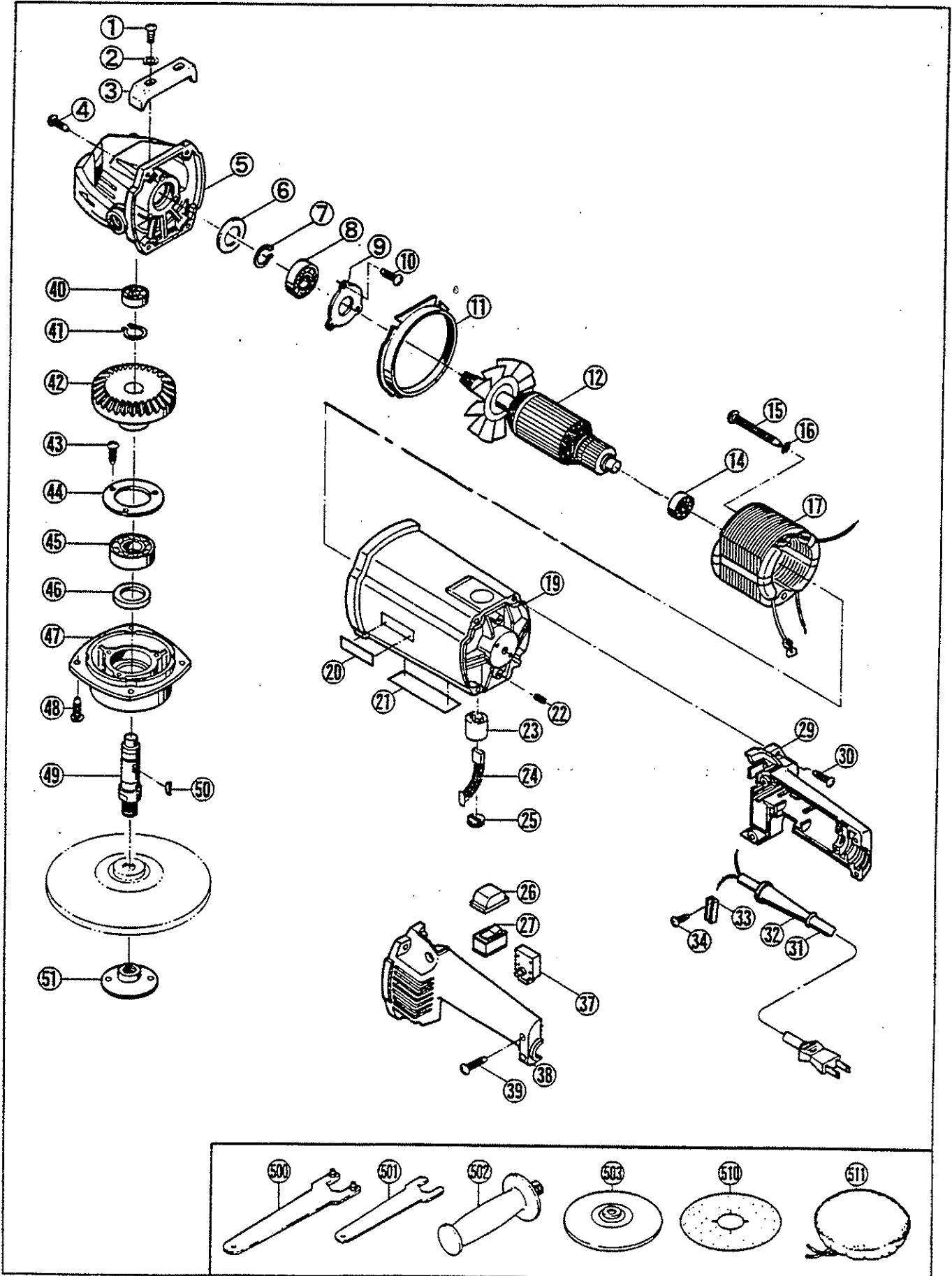


SANDER-POLISHER

SP-1800A



PARTS LIST FOR AFTER SALES SERVICE MODEL SP1800A

P	PART NO.	DESCRIPTION	QTY	REF	PART NO.	DESCRIPTION	QTY
	9000512	PHILLIPS PAN SCREW M5X12	2	31	6520331	CORD ASS'Y AWG#18X2X2	1
2	9570500	WASHER	2	32	6560047	CORD HOLDER	1
3	6370076	TOOL REST	1	33	6560067	CORD CLAMP	1
4	9060525	TAPPING SCREW (B) M5X25	4	34	9060416	TAPPING SCREW (B) M4X16	2
5	6820244	GEAR CASE	1	37	6550225	TRIGGER SWITCH	1
6	6290020	SHIM 0.1	2	38	6830557	HANDLE (B)	1
	6290021	SHIM 0.15	2	39	9060418	TAPPING SCREW (B) M4X18	4
7	9511200	RETAINING RING S-12	1	40	989377002	BALL BEARING #6000LB	1
8	9826201	BALL BEARING #6201LLU	1	41	9511500	RETAINING RING S-15	1
9	6150425	BEARING CLAMP	1	42	6200067	BEVEL GEAR	1
10	9040410	TAPPING SCREW (S) M4X10	3	43	9040510	TAPPING SCREW (S) M5X10	3
11	6490118	FAN CASING	1	44	6150641	BEARING CLAMP	1
12	6030721	ARMATURE	1	45	1750001	BALL BEARING #6202LLB	1
14	622274001	BALL BEARING #608LLU	1	46	6900233	FELT WASHER	1
15	9060565	TAPPING SCREW (B) M5X65	2	47	6820245	GEAR CASE COVER	1
16	9610500	TOOTHED LOCK WASHER M5	2	48	9040516	TAPPING SCREW (S) M5X16	4
17	6500657	FIELD COIL	1	49	6110072	GEAR SHAFT	1
19	6800578	MOTOR HOUSING	1	50	6100630	WOODRUFF KEY	1
20	6920004	"RYOBI" MARK #9	1	51	6072873	CLAMP NUT	1
21	6911096	NAME PLATE	1				
22	9280508	CLAMP SCREW M5X8	2				
23	6570007	BRUSH HOLDER	2				
STANDARD ACCESSORIES							
24	6540123	CARBON BRUSH SET	1	500	6240363	LOCK-NUT WRENCH 35	1
2	5570070	BRUSH CAP	2	501	6240383	SINGLE-END WRENCH 17	1
26	6370075	SWITCH COVER	1	502	6830536	SIDE HANDLE	
27	6550039	CURVETTE SWITCH	1	503	6370074	7" SANDING PAD	1
29	6830554	HANDLE (A)	1	510	6610613	SANDING DISC #24	1
30	9060525	TAPPING SCREW (B) M5X25	4	511	6612063	WOOL BONNET	1

SERVICE NOTES:

