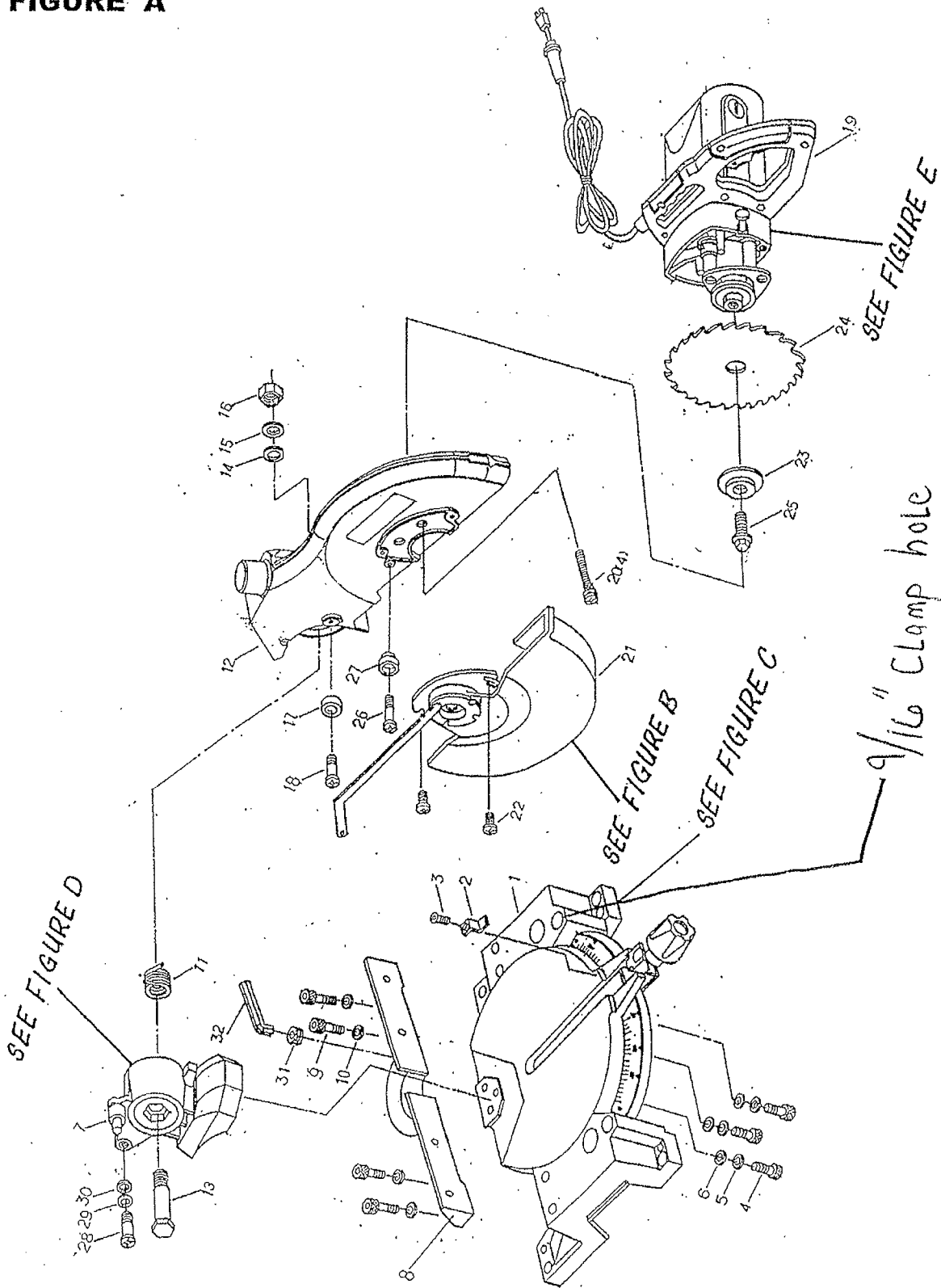


**RYOBI 10 in. (254 mm) MITER SAW - MODEL NO. TS1301**

**FIGURE A**



## RYOBI 10 in. (254 mm) MITER SAW – MODEL NO. TS1301

The model number will be found on a plate attached to the motor housing. Always mention the model number in all correspondence regarding your **Miter Saw** or when ordering repair parts.

### PARTS LIST FOR FIGURE A

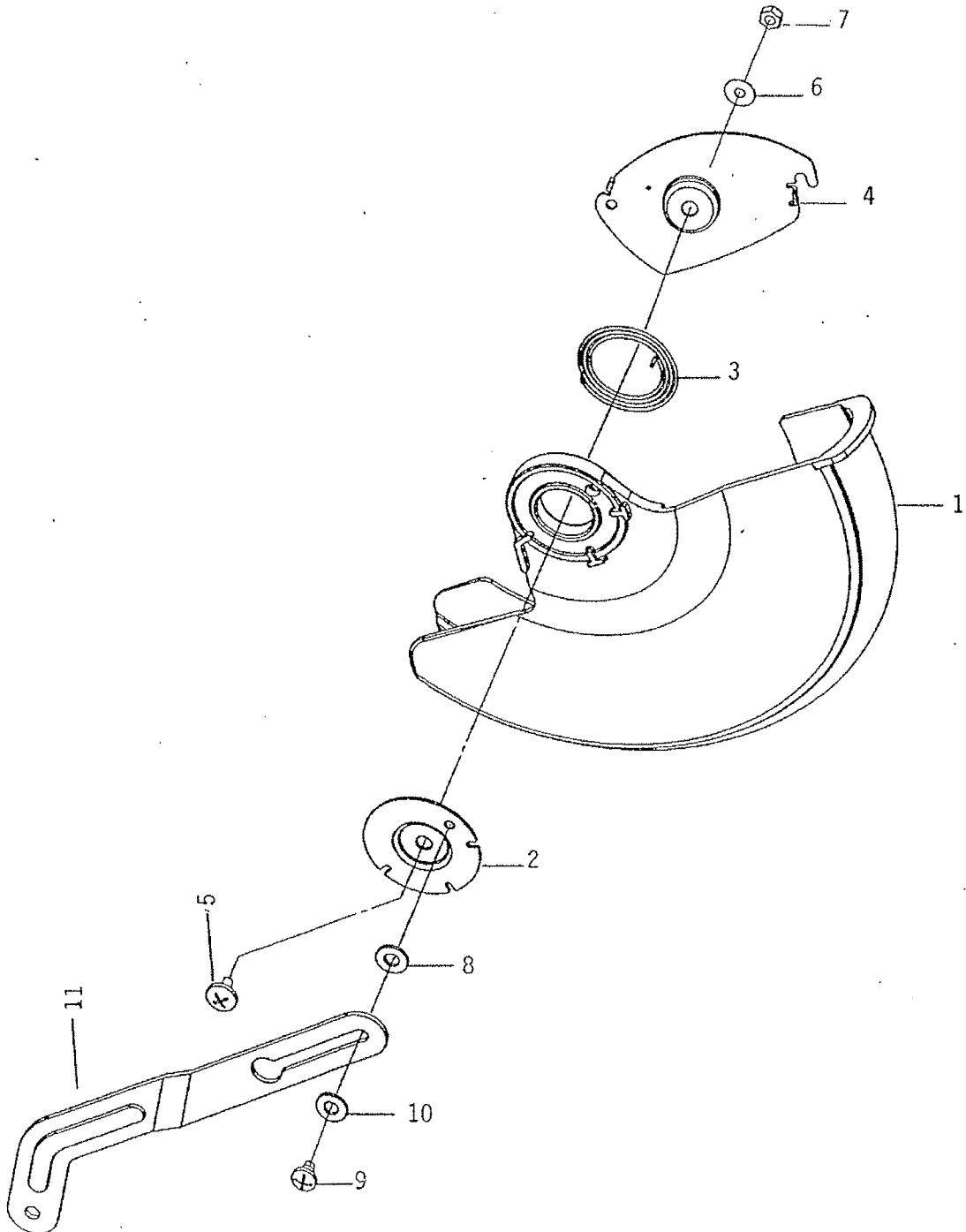
Key No.	Part Number	Description	Quan.	Key No.	Part Number	Description	Quan.
1	900541-002	BASE ASSEMBLY (SEE FIGURE C)		18	020102-005	* SCREW (M6 x 1 x 18L) .....	1
2	303439-000	MITER POINTER .....	1	19	900510-013	MOTOR ASSEMBLY (SEE FIGURE E)	
3	020726-003	* SCREW W/WASHER (M4 x 0.7 x 8L) .....	1	20	020725-007	* SCREW W/WASHER (M6 x 1 x 35L) .....	4
4	020606-009	* SCREW (5/16-18 x 1-1/2 in.) .....	3	21	900511-006	LOWER GUARD ASSEMBLY (SEE FIGURE B)	
5	012204-001	LOCK WASHER .....	3	22	020123-000	* SCREW (10-32 x 1/2L) .....	2
6	021120-003	* WASHER (8 x 16 x 1.2T) .....	3	23	270373-000	BLADE COLLAR .....	1
7	900635-001	PIVOT ASSEMBLY (SEE FIGURE D)		24	350034-001	BLADE .....	1
8	225107-000	FENCE .....	1	25	020300-011	ARBOR SCREW .....	1
9	020606-009	* SCREW (5/16-18 x 1-1/2 in.) .....	4	26	028921-003	* SCREW (10-32 x 20L) .....	1
10	021120-003	* WASHER (8 x 16 x 1.2T) .....	4	27	330027-000	RUBBER SLEEVE .....	1
11	029219-001	TORSION SPRING .....	1	28	020113-008	* SCREW SHOULDER (M6 x 10L) .....	1
12	225153-001	UPPER GUARD .....	1	29	021403-007	* WAVE WASHER (7.5 x 16 x 0.8T) .....	1
13	028957-000	PIVOT BOLT .....	1	30	021103-010	* WASHER (7.5 x 16 x 0.8T) .....	1
14	021110-001	* FLAT WASHER (0.63 in. x 1 in. x 0.8T) .....	1	31	330030-000	GROMMET .....	1
15	021403-005	WAVE WASHER .....	1	32	040027-000	WRENCH (1/4 in. x 100L) .....	1
16	022302-001	* NUT (M16) .....	1	33	867107-010	LOGO PLATE (NOT SHOWN) .....	1
17	303213-000	BUMPER .....	1	34	867107-014	UPPER GUARD LABEL (NOT SHOWN) .....	1

\* STANDARD HARDWARE ITEM — MAY BE PURCHASED LOCALLY

**WARNING:** Improper repair of a double insulated tool can result in damages to the double insulation system possibly causing electrical shock or electrocution. Any repairs requiring disassembly of your tool requires safety testing and should only be performed by a Ryobi Authorized Service Center. For the service center nearest you call 1-800-525-2579 in the United States or 1-866-897-9624 in Canada.

**RYOBI 10 in. (254 mm) MITER SAW – MODEL NO. TS1301**

**FIGURE B**



## RYOBI 10 in. (254 mm) MITER SAW – MODEL NO. TS1301

The model number will be found on a plate attached to the motor housing. Always mention the model number in all correspondence regarding your **Miter Saw** or when ordering repair parts.

### PARTS LIST FOR FIGURE B

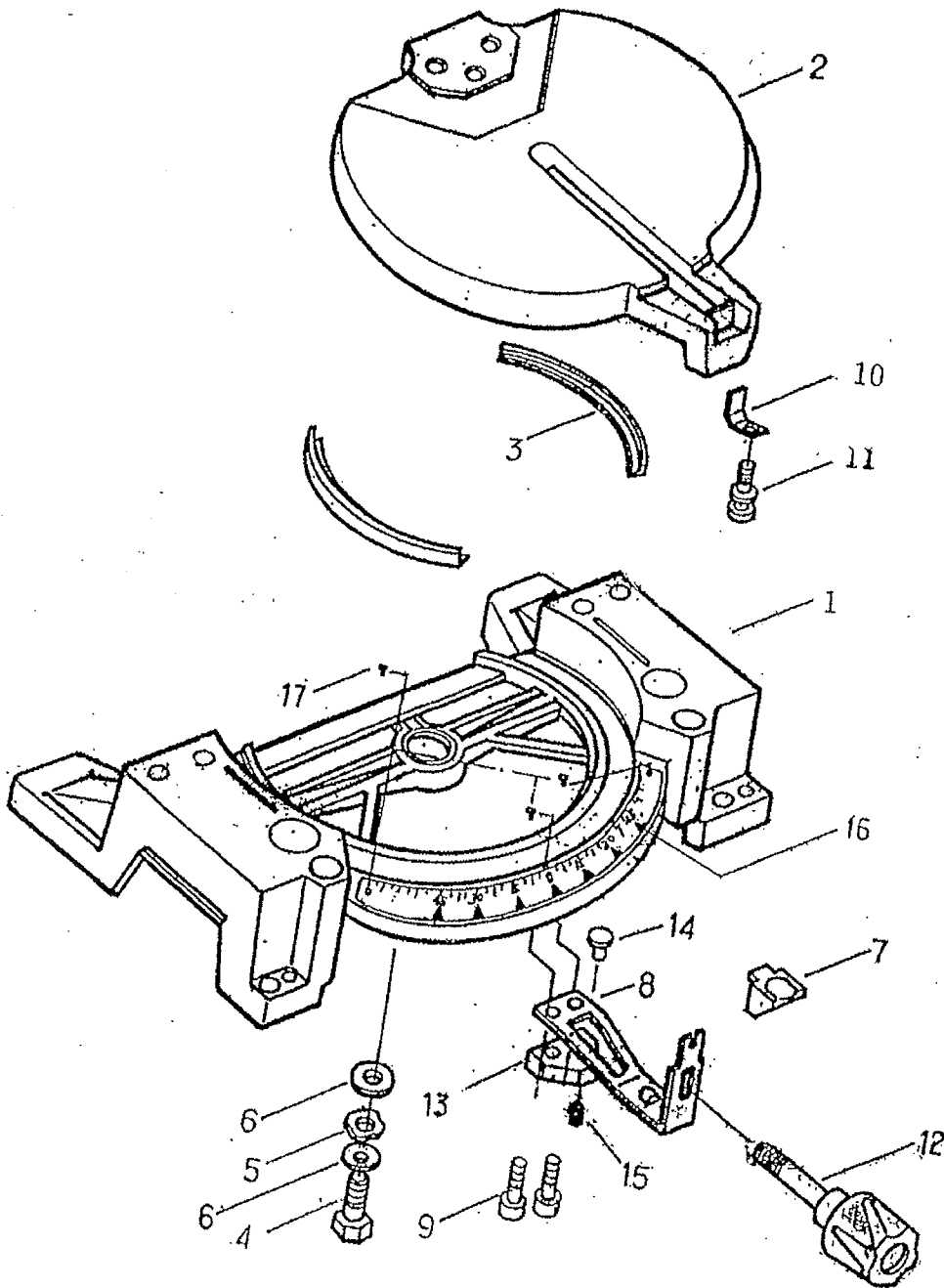
Key No.	Part Number	Description	Quan.
1	303292-001	LOWER GUARD .....	1
2	270376-005	LOWER GUARD PLATE .....	1
3	029301-003	GUARD SPRING .....	1
4	270184-009	PLATE .....	1
5	028939-004	SCREW (10-32) .....	1
6	021108-006	* WASHER (13/64 x 15/32 x 0.5T) .....	1
7	022307-001	* NUT (10-32) .....	1
8	021119-002	* WASHER (5.5 x 16 x 0.8T) .....	1
9	028931-002	* SCREW (M5 x 0.8P) .....	1
10	021103-014	* WASHER (7.5 x 16 x 1.5T) .....	1
11	270435-000	LEVER .....	1
12	867017-013	GUARD WARNING LABEL .....	1
	972000-881R	OPERATOR'S MANUAL	
	1-02		

\* STANDARD HARDWARE ITEM — MAY BE PURCHASED LOCALLY

**WARNING:** Improper repair of a double insulated tool can result in damages to the double insulation system possibly causing electrical shock or electrocution. Any repairs requiring disassembly of your tool requires safety testing and should only be performed by a Ryobi Authorized Service Center. For the service center nearest you call 1-800-525-2579 in the United States or 1-866-897-9624 in Canada.

**RYOBI 10 in. (254 mm) MITER SAW – MODEL NO. TS1301**

**FIGURE C**



## RYOBI 10 in. (254 mm) MITER SAW – MODEL NO. TS1301

The model number will be found on a plate attached to the motor housing. Always mention the model number in all correspondence regarding your **Miter Saw** or when ordering repair parts.

### PARTS LIST FOR FIGURE C

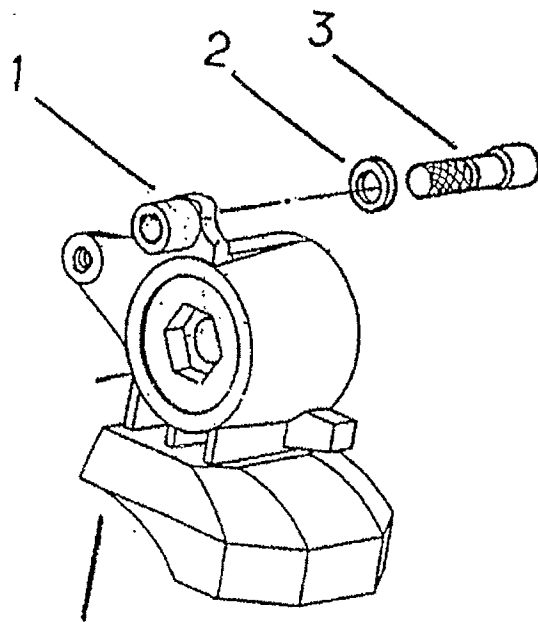
Key No.	Part Number	Description	Quan.
1	225095-004	BASE .....	1
2	225108-002	TABLE .....	1
3	303283-000	SHOE .....	2
4	028956-000	SHOULDER BOLT .....	1
5	021611-000	WAVE WASHER .....	1
6	021117-001	* WASHER (0.505 in. x 13/16 in. x 1T) .....	2
7	303284-000	MITER INDEX GRIP .....	1
8	290112-000	SPRING INDEX .....	1
9	020600-013	HEX SOCKET BOLT .....	2
10	270028-000	CLAMP PLATE .....	1
11	020726-003	* SCREW W/WASHER .....	1
12	303285-000	MITER HANDLE .....	1
13	225114-000	SUPPORT PLATE .....	1
14	303233-000	PLUG .....	1
15	020504-001	* LOCKING SCREW (M6 x 1 x 10L) .....	1
16	870030-000	MITER SCALE .....	1
17	024400-000	COACH SCREW .....	3
18	867107-015	NO HANDS LABEL (NOT SHOWN) .....	2

\* STANDARD HARDWARE ITEM — MAY BE PURCHASED LOCALLY

**WARNING:** Improper repair of a double insulated tool can result in damages to the double insulation system possibly causing electrical shock or electrocution. Any repairs requiring disassembly of your tool requires safety testing and should only be performed by a Ryobi Authorized Service Center. For the service center nearest you call 1-800-525-2579 in the United States or 1-866-897-9624 in Canada.

**RYOBI 10 in. (254 mm) MITER SAW – MODEL NO. TS1301**

**FIGURE D**



## RYOBI 10 in. (254 mm) MITER SAW – MODEL NO. TS1301

The model number will be found on a plate attached to the motor housing. Always mention the model number in all correspondence regarding your **Miter Saw** or when ordering repair parts.

### PARTS LIST FOR FIGURE D

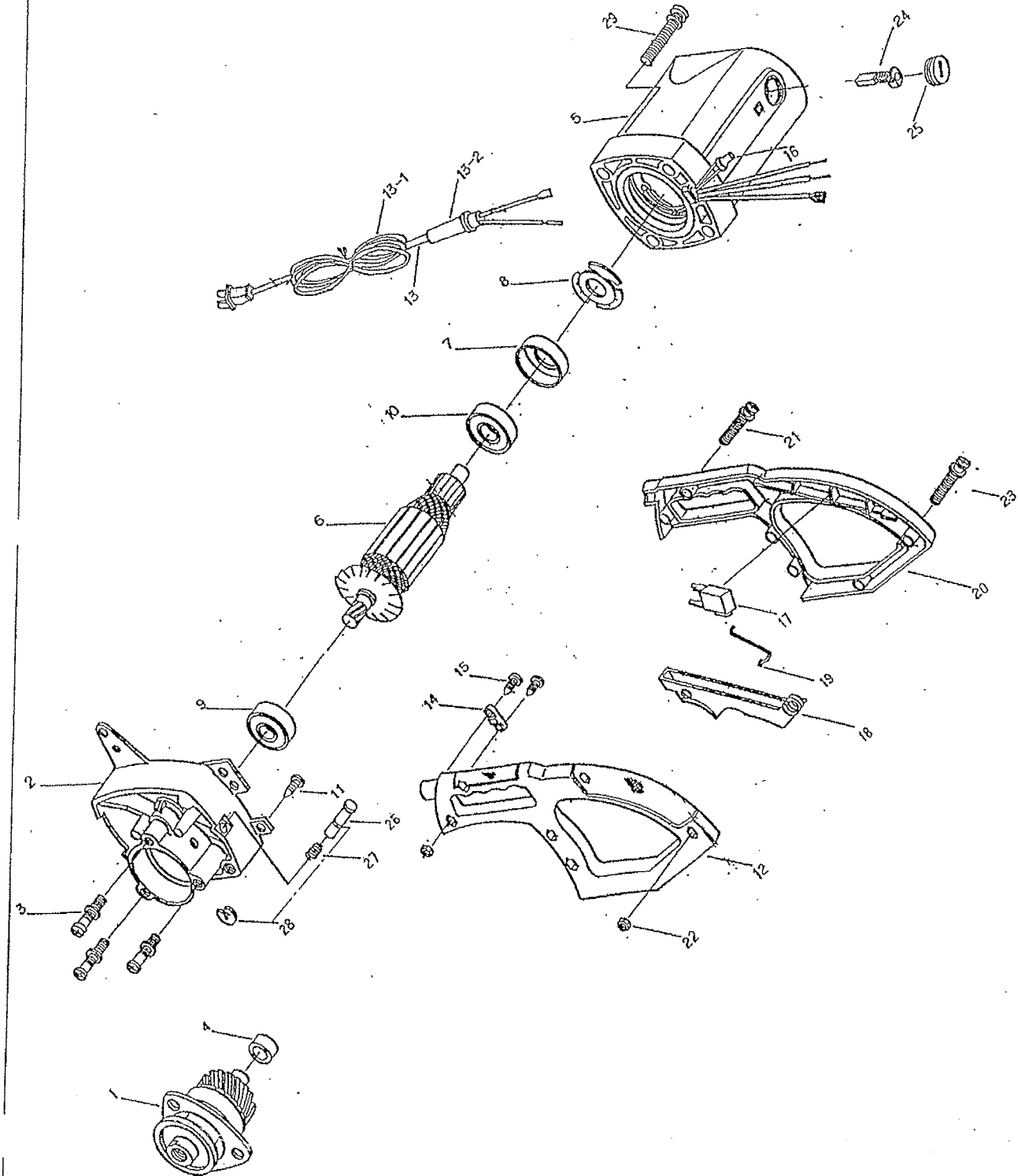
Key No.	Part Number	Description	Quan.
1	225149-001	PIVOT .....	1
2	026100-001	"O" RING .....	1
3	026307-001	LATCH PIN .....	1

**WARNING:** Improper repair of a double insulated tool can result in damages to the double insulation system possibly causing electrical shock or electrocution. Any repairs requiring disassembly of your tool requires safety testing and should only be performed by a Ryobi Authorized Service Center. For the service center nearest you call 1-800-525-2579 in the United States or 1-866-897-9624 in Canada.



**RYOBI 10 in. (254 mm) MITER SAW – MODEL NO. TS1301**

**FIGURE E**



## RYOBI 10 in. (254 mm) MITER SAW – MODEL NO. TS1301

The model number will be found on a plate attached to the motor housing. Always mention the model number in all correspondence regarding your **Miter Saw** or when ordering repair parts.

### PARTS LIST FOR FIGURE E

Key No.	Part Number	Description	Quan.	Key No.	Part Number	Description	Quan.
1	900512-000	GEAR ASSEMBLY .....	1	16	364001-001	TERMINAL .....	1
2	224069-004	GEAR HOUSING .....	1	17	303288-000	SWITCH .....	1
3	020704-005	SCREW W/WASHER .....	3	18	303440-000	TRIGGER .....	1
4	052001-000	NEEDLE BEARING .....	1	19	029600-001	SPRING .....	1
5	900513-008	FIELD / HOUSING ASSEMBLY .....	1	20	303290-000	RIGHT HANDLE .....	1
6	162011-001	ARMATURE .....	1	21	020702-005	* SCREW W/WASHER (M4 x 0.7 x 20L) .....	6
7	330043-000	BEARING COVER .....	1	22	022100-001	NUT .....	7
8	021404-001	* WASHER (10.2 x 29.4 x 0.25T) .....	1	23	020702-013	* SCREW W/WASHER (M4 x 0.7 x 30L) .....	1
9	050009-300	BEARING (6001LLU) .....	1	24	375007-000	BRUSH .....	2
10	050010-100	BEARING (6201LLU) .....	1	25	303144-001	BRUSH CAP .....	2
11	020132-001	* SCREW (M4 x 0.7 x 10L) .....	1	26	290113-000	ARBOR LOCK .....	1
12	303287-000	LEFT HANDLE .....	1	27	029151-001	SPRING .....	1
13	900527-000	CORD ASSEMBLY		28	023201-001	RETAINING RING .....	1
13-1	080401-006	CORD W/PLUG .....	1	29	020703-003	* SCREW W/WASHER (M5 x 0.8 x 25L) .....	4
13-2	330032-000	CORD SLEEVE .....	1	30	871047-000	DATA PLATE (NOT SHOWN) .....	1
14	303025-000	CORD CLAMP .....	1	31	867107-011	WARNING LABEL (NOT SHOWN) .....	1
15	020132-000	* SCREW (M4 x 0.7 x 14L) .....	2				

\* STANDARD HARDWARE ITEM — MAY BE PURCHASED LOCALLY

**WARNING:** Improper repair of a double insulated tool can result in damages to the double insulation system possibly causing electrical shock or electrocution. Any repairs requiring disassembly of your tool requires safety testing and should only be performed by a Ryobi Authorized Service Center. For the service center nearest you call 1-800-525-2579 in the United States or 1-866-897-9624 in Canada.