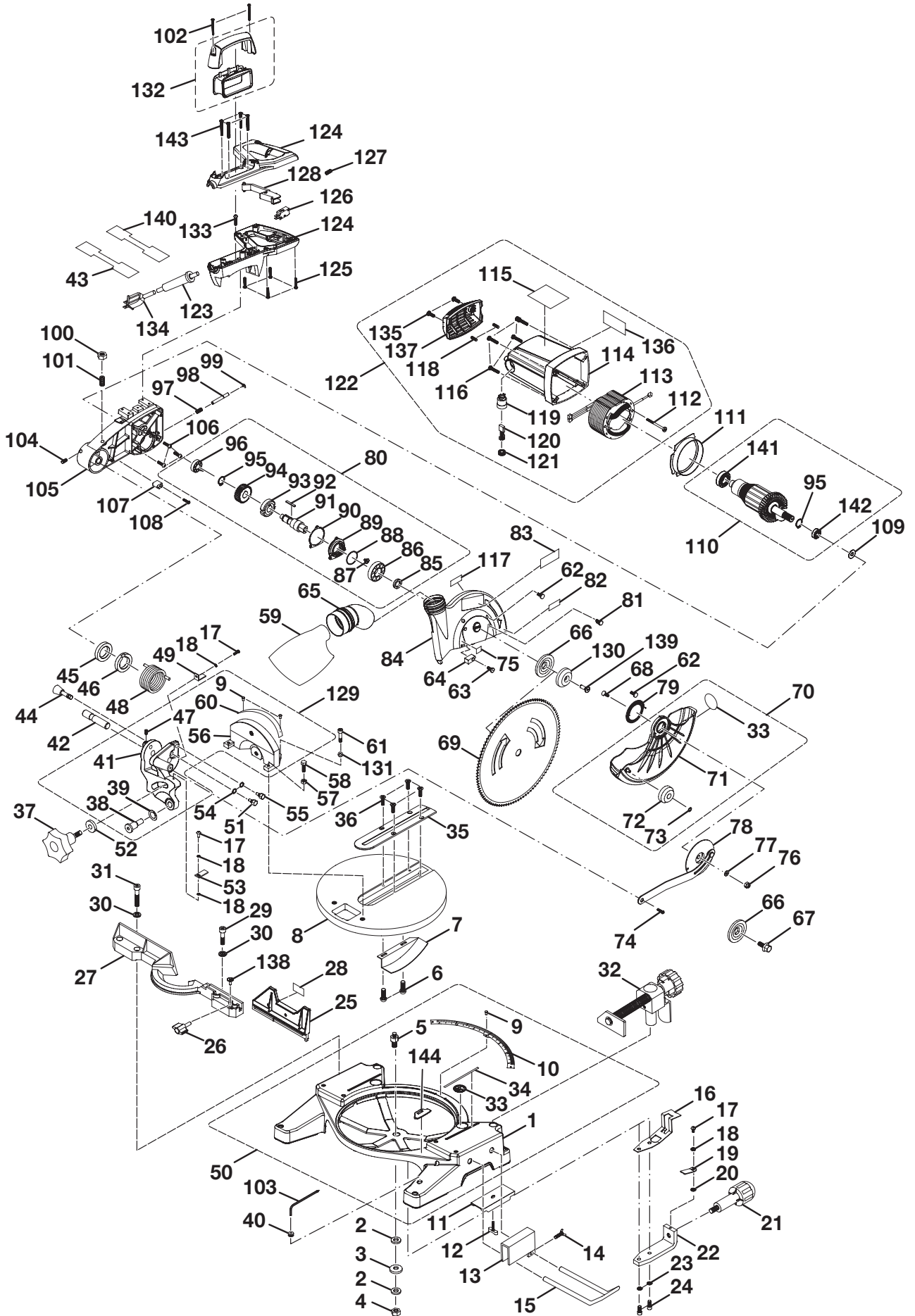


RYOBI 10 in. MITER SAW W/LASER - MODEL NUMBER TS1354DXL



RYOBI 10 in. MITER SAW W/LASER – MODEL NUMBER TS1354DXL

The model number will be found on a plate attached to the motor housing. Always mention the model number in all correspondence regarding your **MITER SAW** or when ordering repair parts.

PARTS LIST

KEY NO.	PART NUMBER	DESCRIPTION	QTY.
1	089100210001	BASE.....	1
2	A35031025153	* FLAT WASHER (M10).....	2
3	A36131020100	* SPRING WASHER (M10).....	1
4	A31703010008	* LOCK NUT (M10).....	1
5	518106300	TABLE SPINDLE.....	1
6	A19003040093	* SCREW (M4 X 9 mm PAN HD.).....	2
7	089100208007	TABLE HOLD DOWN.....	1
8	089100210032	TABLE.....	1
9	A49010020056	* RIVET (Ø2.5 X 5 mm).....	6
10	089100208010	MITER SCALE.....	1
11	558511100	FIXED PLATE.....	2
12	555516000	CLAMP BRACKET SCREW.....	2
13	558507200	STOP BLOCK.....	1
14	558512100	WING BOLT.....	1
15	558510200	TABLE EXTENSION.....	2
16	518105400	LOCK PLATE.....	1
17	A10003040107	* SCREW (M4 X 10 mm PAN HD.).....	3
18	A35030410018	FLAT WASHER (M4).....	4
19	578105102	MITER INDICATOR.....	1
20	A35030511158	FLAT WASHER (M5).....	1
21	518103100	TABLE LOCK HANDLE.....	1
22	518104200	CONTROL ARM.....	1
23	A36030612157	SPRING WASHER (M6).....	2
24	A07003060257	* CAP SCREW (M6 X 25 mm).....	2
25	089100208025	SLIDE FENCE.....	1
26	089100208026	KNOB.....	1
27	089100208027	FENCE.....	1
28	089100208028	WARNING LABEL (SLIDE FENCE).....	1
29	A07003080253	* SCREW (M8 X 25 mm SOC. HD.).....	2
30	A36030814204	* SPRING WASHER (M8).....	4
31	A07103080457	* CAP SCREW (M8 X 45 mm).....	2
32	518A08130	MITER CLAMP ASSEMBLY.....	1
33	089100207097	WARNING LABEL (NO HANDS).....	3
34	588071004	LINE WARNING LABEL.....	2
35	089100207036	TABLE INSERT.....	1
36	A16003040083	* SCREW (M4 X 8 mm FLAT HD.).....	4
37	089100207024	BEVEL HANDLE.....	1
38	589010200	PIVOT SHAFT.....	1
39	589011308	WASHER.....	1
40	503118000	GROMMET.....	1
41	089100208041	SUPPORT BRACKET ASSEMBLY.....	1
42	089100208042	PIVOT ARM.....	1
43	589504000	HANG TAG (FR).....	1
44	089100208706	ARM LOCK PIN ASSEMBLY.....	1
45	511348000	REAR SPRING SPACER.....	1
46	511349000	FRONT SPRING SPACER.....	1
47	A18003040080	* FIXED SCREW (M4 X 8 mm).....	1
48	089100208048	TENSION SPRING.....	1
49	089100208049	BEVEL POINTER (L).....	1
50	089100210700	BASE ASSEMBLY (INC. KEY NOS. 1, 5, 9, 10, 33, 34 & 144).....	1
51	511208000	SPRING FIXED BOLT.....	1

* Standard Hardware Item – May Be Purchased Locally

RYOBI 10 in. MITER SAW W/LASER – MODEL NUMBER TS1354DXL

The model number will be found on a plate attached to the motor housing. Always mention the model number in all correspondence regarding your **MITER SAW** or when ordering repair parts.

PARTS LIST

KEY NO.	PART NUMBER	DESCRIPTION	QTY.
52	A35031030300	* FLAT WASHER (M10).....	1
53	089100208053	BEVEL POINTER.....	1
54	A36031015158	* SPRING WASHER (M10).....	2
55	588058200	LOCK BOLT	1
56	089100207050	PIVOT SUPPORT	1
57	A30003006003	* HEX NUT (M6).....	2
58	578206000	* HEX BOLT (M6 X 16 mm).....	2
59	089100207055	DUST BAG	1
60	089100208061	BEVEL SCALE.....	1
61	A07003100256	* CAP SCREW (M10 X 25 mm).....	2
62	A10003050106	* SCREW (M5 X 10 mm PAN HD.).....	4
63	A10003040152	* SCREW (M4 X 15 mm PAN HD.).....	1
64	589032207	STOPPER.....	1
65	511518000	ELBOW	1
66	588035105	FLANGE	2
67	503412000	ARBOR SCREW.....	1
68	581410003	SCREW	1
69	089100208070	BLADE (36 TOOTH).....	1
70	089100208702	LOWER GUARD ASSEMBLY (INC. KEY NOS. 71-73 AND 33).....	1
71	089100208072	LOWER GUARD.....	1
72	089100207103	ROLLER	1
73	538417000	RETAINING RING.....	1
74	589015108	SHOULDER SCREW.....	1
75	089100207051	BLADE BOLT DIRECTIONAL LABEL	1
76	A31703006004	* LOCK NUT (M6).....	1
77	A35010616105	* FLAT WASHER (M6).....	1
78	089100208079	RETAINING SPRING HOLDER.....	1
79	589021300	RETRACT SPRING.....	1
80	089100208703	OUTPUT SPINDLE ASSEMBLY (INC. KEY NOS. 85-96)	1
81	A19001040091	* SCREW (M4 X 9 mm PAN HD.).....	1
82	580411000	UPPER GUARD WARNING LABEL.....	1
83	089100207044	UPPER GUARD LOGO LABEL	1
84	089100207710	UPPER SAFETY GUARD WITH PIVOT GUARD AND RIVET (INC. KEY NOS. 75 & 82)	1
85	511414000	SPACER	1
86	A50060030041	* BALL BEARING (6003Z/RS).....	1
87	511354000	* SCREW (M5 X 6 mm PAN HD.).....	2
88	A63020000350	O-RING	1
89	511355000	GEAR COVER	1
90	511336000	GASKET	1
91	511337000	GEAR SHAFT.....	1
92	A45204040180	PARALLEL KEY.....	1
93	588029007	LOCK RING.....	1
94	608309000	OUTPUT GEAR.....	1
95	A46000150008	C-RING	2
96	A50060000027	* BALL BEARING (6000ZZ)	1
97	588027005	COMPRESSION SPRING	1
98	588026106	SPINDLE LOCK PIN.....	1
99	A47000040006	E-RING.....	1
100	A30003010007	* HEX NUT (M10).....	1

* Standard Hardware Item – May Be Purchased Locally

RYOBI 10 in. MITER SAW W/LASER – MODEL NUMBER TS1354DXL

The model number will be found on a plate attached to the motor housing. Always mention the model number in all correspondence regarding your **MITER SAW** or when ordering repair parts.

PARTS LIST

KEY NO.	PART NUMBER	DESCRIPTION	QTY.
101	A18003100206	* FIXED SCREW (M10 X 20 mm).....	1
102	089100208103	* SCREW (M4 X 40 mm PAN HD.).....	2
103	089100207113	HEX KEY (M35 X 115 mm).....	1
104	A18003050080	* SCREW (M5 X 8 mm).....	1
105	089100208106	ARM	1
106	089100208107	* SCREW (M4 X 12 mm PAN HD.).....	3
107	588021203	RUBBER SLEEVE	1
108	A10003040207	* SCREW (M4 X 20 mm PAN HD.).....	1
109	A63020000320	O-RING	1
110	9053D01000	ARMATURE ASSEMBLY (INC. KEY NOS. 95, 141 AND 142) ..	1
111	089100207110	BAFFLE	1
112	A90101050603	* SCREW (M5 X 60 mm PAN HD.).....	2
113	089100207088	FIELD ASSEMBLY.....	1
114	089100207098	MOTOR HOUSING	1
115	089100208116	WARNING LABEL W/LASER (ENG).....	1
116	A10003050300	* SCREW (M5 X 30 mm PAN HD.).....	4
117	089100208118	DATA LABEL.....	1
118	A18003050054	* FIXED SCREW (M5 X 5 mm).....	2
119	588007305	BRUSH HOLDER	2
120	089100207107	BRUSH ASSEMBLY	2
121	588005105	BRUSH CAP	2
122	089100208704	MOTOR HOUSING ASSEMBLY (INC. KEY NOS. 112-116, 118-121 AND 135-137).....	1
123	588004100	BEND RELIEF	1
124	089100208705	D-HANDLE ASSEMBLY (INC. KEY NO. 125).....	1
125	A70003040200	* SCREW (M4 X 20 mm PAN HD.).....	4
126	580302000	SWITCH	1
127	511308000	COMPRESSION SPRING	1
128	089100208129	SWITCH ACTUATOR	1
129	089100208708	PIVOT SUPPORT ASSEMBLY (INC. KEY NOS. 9, 38, 39, 41, 47, 56 AND 60).....	1
130	511504000	LASER GUIDE.....	1
131	A36031018255	SPRING WASHER (M10).....	2
132	089100208709	CARRY HANDLE ASSEMBLY	1
133	A10003050083	* SCREW (M5 X 8 mm PAN HD.)	1
134	089100207101	POWER CORD.....	1
135	A10003050150	* SCREW (M5 X 15 mm PHILIP HD.).....	2
136	089100207105	LOGO LABEL.....	1
137	089100207099	END CAP.....	1
138	089100208139	* T-BOLT (SLIDE FENCE ANTI-DROP M5 X 15 mm).....	1
139	511505000	LASER GUIDE BOLT.....	1
140	089100207117	HANG TAG LABEL (TIP OVER)	1
141	A50006080049	BALL BEARING (608).....	1
142	A50060020056	BALL BEARING (6002)	1
143	A10003050350	* SCREW (M5 X 35 mm PAN HD.).....	4
144	089100210009	WEAR PAD.....	5
	983000940	OPERATOR'S MANUAL	
	11-14-08		
	(REV:07)		

* Standard Hardware Item – May Be Purchased Locally