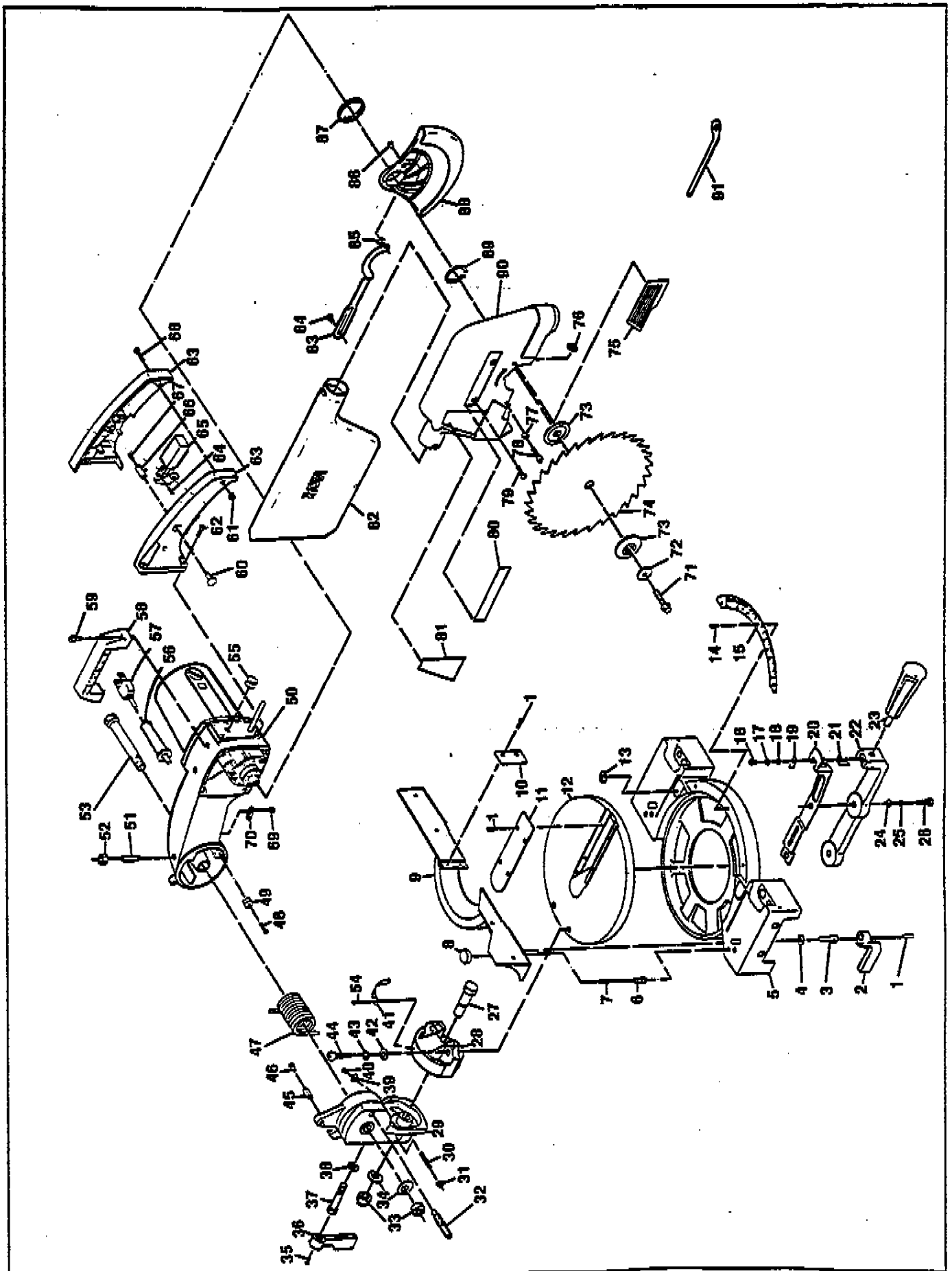


MITER SAW

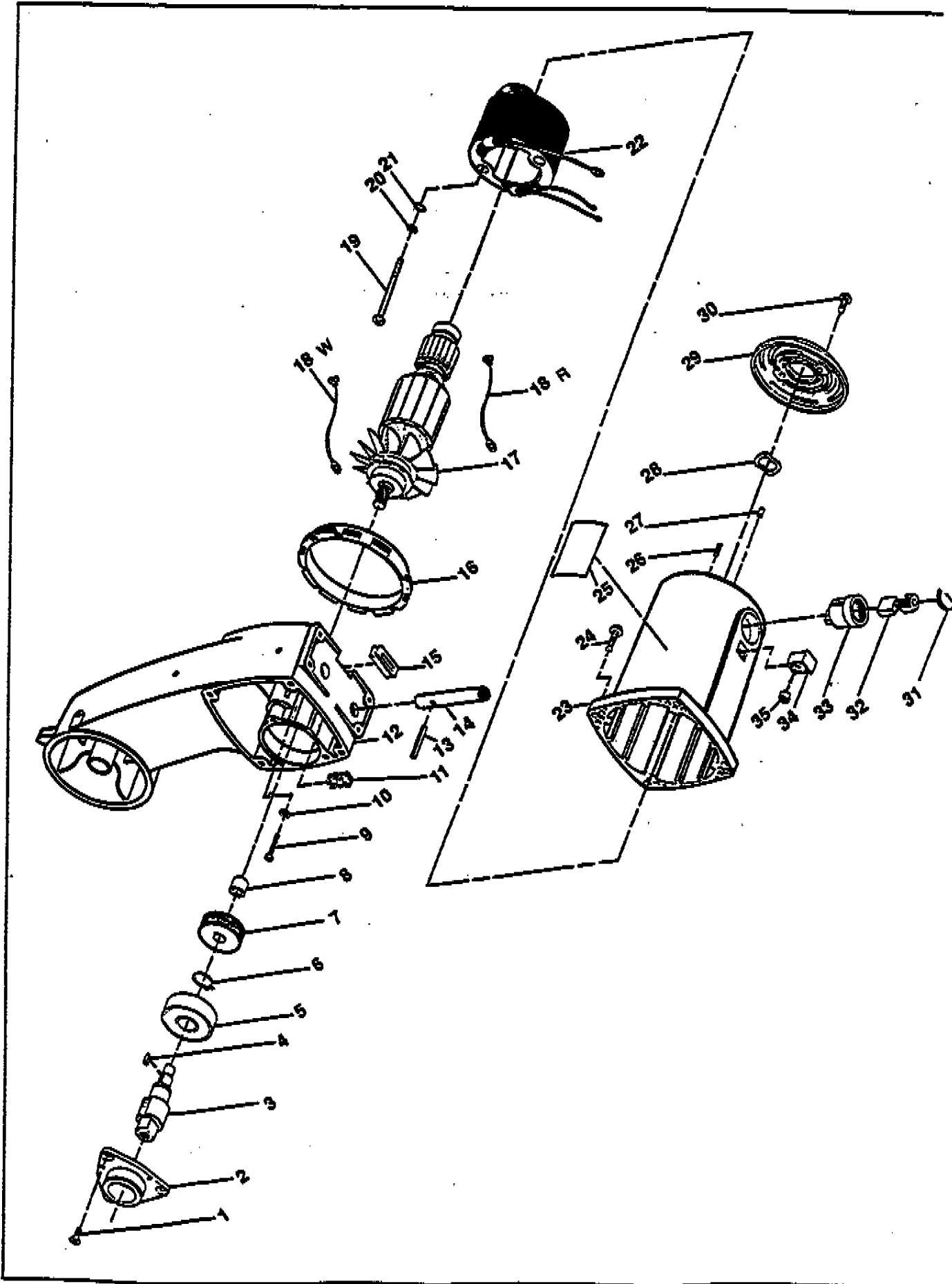
TS260III



PARTS LIST FOR AFTER SALES SERVICE MODEL TS260III

REF	PART NO.	DESCRIPTION	QTY	REF	PART NO.	DESCRIPTION	QTY
1	1130054	TAPPING SCREW	8	47	1180012	TORSION SPRING	1
2	1190006	LOCK LEVER	2	48	1130058	TAPPING SCREW M 5X20	1
3	1130055	HEX HEAD BOLT 10X25	2	49	1370004	RUBBER SLEEVE	1
4	1900024	WASHER	2	50	4030005	MOTOR ASSY	1
5	1850003	BASE	1	51	1130064	CLAMP SCREW	1
6	1120003	STOPPER PIN	2	52	9311000	HEX NUT M10	1
7	1180011	COMPRESSION SPRING	2	53	1130066	HEX HD. BOLT	1
8	1830003	KNOB	2	54	1130056	SCREW	1
9	1950003	FENCE	1	55	4560002	STRAIN RELIEF	1
10	1360025	FENCE PLATE	1	56	6560047	CORD HOLDER	1
11	1360024	SAW GUIDE PLATE	1	57	6520221	CORD	1
12	1190002	TURN TABLE	1	58	4830004	SEGMENT HANDLE	1
13	1920014	WARNING LABEL	2	59	4130057	SOCKET HEAD BOLT	2
14	1130053	RIVET # 2	3	60	4830005	SWITCH BUTTON	1
15	1950002	BEVEL SCALE	1	61	4130063	HEX NUT	2
16	1130052	PAN SCREW	1	62	4130064	PAN HD. SCREW	1
17	9550800	WASHER	1	63	4830006	HANDLE ASSY	1
18	1900019	WASHER	1	64	4130065	TAPPING SCREW	2
19	1950001	MITER SCALE	1	65	4550006	SWITCH	1
20	1180010	SPRING INDEX	1	66	4550007	SWITCH LOCK	1
21	1150018	PLATE CLAMP	1	67	4180005	SPRING	1
22	1190001	ARM MITER	1	68	4130068	PAN HD. SCREW	2
23	1830002	AUX.HANDLE	1	69	9060414	TAPPING SCREW	1
24	1900018	WASHER	2	70	6560067	CORD CLAMP	1
25	1900017	SPRING WASHER	2	71	1130070	HEX HD. BOLT M 8X20	1
26	9190825	HEX HD.BOLT M 8X25	2	72	1900025	WASHER	1
27	1130057	HEX HD.BOLT	1	73	1940004	FLANGE	2
28	1190003	BRACKET	1	74	4650001	BLADE	1
29	1190004	PIVOT	1	75	1880013	SAFETY COVER	1
30	1130061	CLAMP SCREW	2	76	1100003	PUSH NUT	1
31	9310800	HEX NUT M6	2	77	4900014	COLLAR	1
32	1130062	STOPPER BOLT	1	78	4130067	HEX HEAD BOLT	1
33	1130063	NUT M16	2	79	1130058	TAPPING SCREW	3
34	1900023	WASHER	2	80	1920016	RYOBI MARK	1
35	1130054	TAPPING SCREW	1	81	1920015	WARNING LABEL	1
36	1830004	LOCK LEVER	1	82	6073433	DUST BAG	1
37	1130069	HEX HD. BOLT	1	83	1190009	LEVER	1
38	1900021	WASHER	1	84	1130072	SCREW	1
39	1950005	BEVEL INDICATOR	1	85	4900013	NYLON WASHER	1
40	1130056	SCREW	1	86	1120004	CENTER PIN	1
41	1950004	BEVEL SCALE	1	87	1180013	TORSION SPRING	1
42	1900021	WASHER	2	88	1880028	LOWER GUARD	1
43	9551000	SPRING WASHER M10	2	89	1100002	RET.RING	1
44	1130060	SOCKET HD. BOLT M10	2	90	1880012	SAFETY GUARD	1
45	1150019	LOCK PLATE	1	91	1240040	WRENCH	1
46	1130068	ROUND HD.BOLT	1		4980004	OWNERS MANUAL	

TS260III



PARTS LIST FOR AFTER SALES SERVICE MODEL TS260III (MOTOR)

REF	PART NO.	DESCRIPTION	QTY	REF	PART NO.	DESCRIPTION	QTY
1	4130074	SCREW	3				
2	4880002	GEAR BOX COVER	1				
3	4110003	ARBOR SHAFT	1				
4	4110004	PARALLEL KEY	1				
5	9846304	BALL BEARING 6304LLB	1				
6	4110005	C RING	1				
7	4050001	HELIX GEAR	1				
8	4750001	NEEDLE BEARING	1				
9	4130068	SCREW	2				
10	4900015	SPRING WASHER	2				
11	4180006	COMPRESSION SPRING	1				
12	4800005	UPPER ARM	1				
13	4120012	SPRING PIN	1				
14	4120013	STOP PIN	1				
15	4370004	WIRE PROTECTOR	1				
16	4490001	RING WIRE HOLDER	1				
17	4460001	ARMATURE ASSY	1				
18W	4560003	WHITE LEAD ASSY	1				
18R	4560004	RED LEAD ASSY	1				
19	4130069	SCREW	2				
20	4900015	SPRING WASHER	2				
21	4900016	LOCK WASHER	2				
22	4500001	FIELD ASSY	1				
23	4800006	MOTOR HSG. ASSY	1				
24	4130070	SCREW	4				
25	4910004	NAME PLATE	1				
26	4130072	SET SCREW	2				
27	4120011	RUBBER PIN	1				
28	4900017	WAVE WASHER	1				
29	4880001	REAR MOTOR COVER	1				
30	4130073	SCREW	2				
31	4570002	BRUSH CAP	2				
32	4540001	BRUSH SET	PAIR				
33	4570001	BRUSH HOLDER	2				
34	4850009	NUT SEAT	2				
35	4130071	HEX NUT	2				