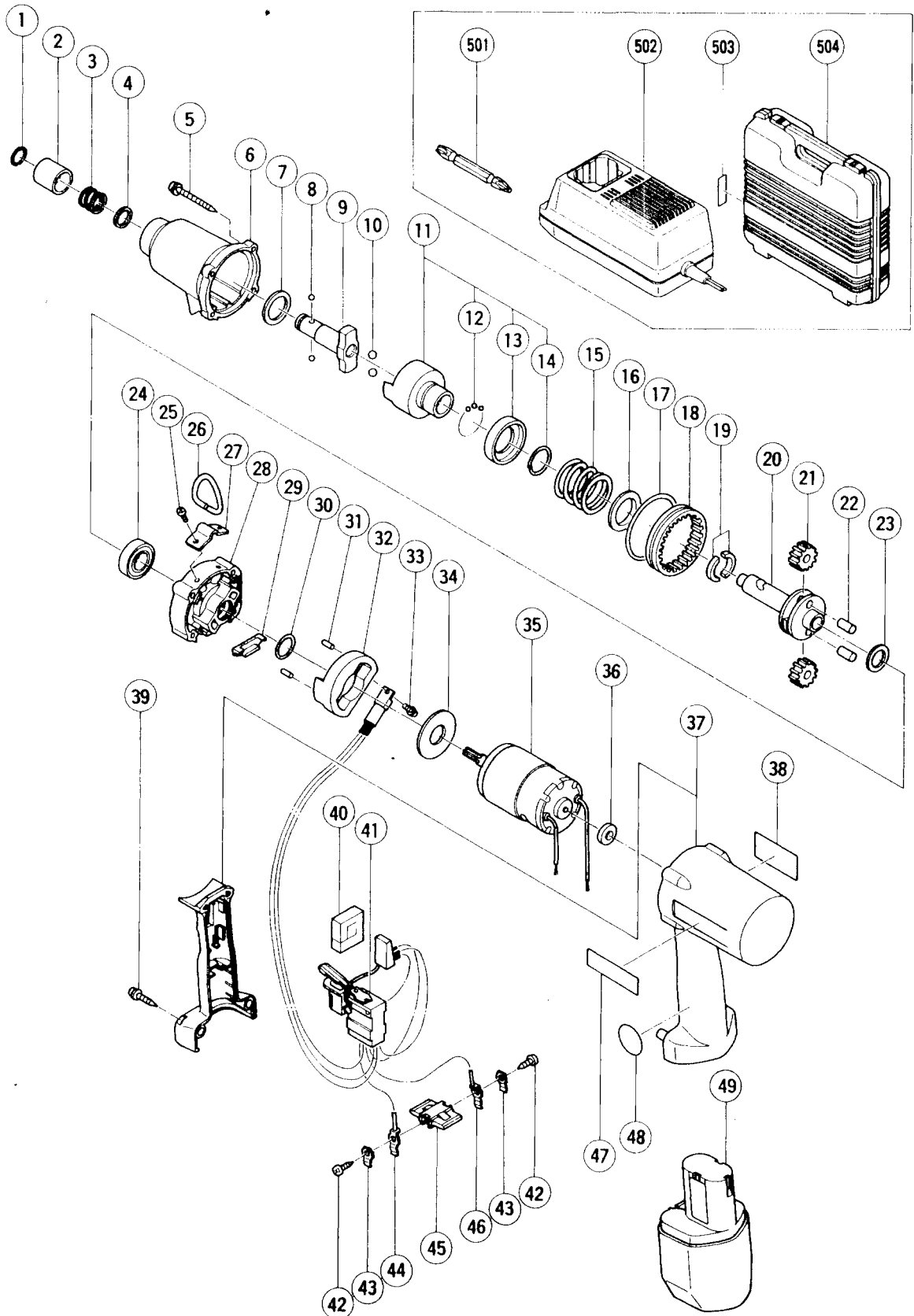


ELECTRIC TOOL PARTS LIST

■ CORDLESS IMPACT DRIVER
Model WH12DB

1990 · 10 · 31
WH12DB(E1)



PARTS

WH 12DB

ITEM NO.	CODE NO.	DESCRIPTION	NO. USED	REMARKS	
1	302-863	RETAINING RING	1		
2	302-862	GUIDE SLEEVE	1		
3	302-861	GUIDE SPRING	1		
4	302-860	WASHER (D)	1		
5	992-630	TAPPING SCREW (W/SP.WASHER) D4X40	4		
6	303-895	HAMMER CASE	1		
7	991-456	WASHER (A)	1		
8	959-155	STEEL BALL D3.97 (10 PCS.)	2		
9	302-859	ANVIL (C)	1		
10	959-154	STEEL BALL D5.556 (10 PCS.)	2		
11	985-985	HAMMER ASS'Y	1	INCLUD.12-14	
12	959-148	STEEL BALL D3.175 (10 PCS.)	26		
13	985-990	SPRING SHEET	1		
14	985-991	RETAINING RING	1		
15	302-718	SPRING	1		
16	302-717	WASHER (B)	1		
17	980-744	O - RING (S - 55)	1		
18	303-199	RING GEAR	1		
19	303-198	STOPPER PIECE	2		
20	302-715	SPINDLE	1		
21	985-976	IDLE GEAR	2		
22	302-716	NEEDLE ROLLER	2		
23	302-714	WASHER	1		
24	600-2VV	BALL BEARING 6002VVCMP2S	1		
25	949-215	MACHINE SCREW M4X8 (10 PCS.)	2		
26	302-725	HANGER (B)	1		
27	302-726	HANGER PLATE	1		
28	303-896	INNER COVER	1		
29	302-723	DAMPER (B)	1		
30	878-885	O - RING (S - 18)	1		
31	984-321	RUBBER PIN	2		
32	302-730	FIN	1		
33	998-362	MACHINE SCREW (W/SP.WASHER) M3.5X8	1		
34	302-722	DAMPER (A)	1		
35	302-728	MOTOR	1		
36	302-712	RUBBER RING	1		
37	303-898	HOUSING SET	1		
38		NAME PLATE	1		
39	984-750	TAPPING SCREW (W/FLANGE) D4X16	2		
40	992-078	SEAL	1		
41	302-734	SWITCH ASS'Y (1P PLUG IN TYPE) W/O LOCK	1	INCLUD.44,46	
42	958-715	TAPPING SCREW D4X10	2		
43	996-118	HOLDER SPRING	2		
44	300-204	TERMINAL	1		
45	303-899	TERMINAL PIECE	1		
46	302-338	TERMINAL	1		
47	303-902	HITACHI LABEL	1		
48	987-135	MARK PLATE	1		
*	49	300-002	BATTERY EB 12 (W/ENGLISH N.P.)	1	
*	49	300-004	BATTERY EB 12 (W/ENGLISH N.P.)	1	FOR USA,CAN
*	49	302-758	BATTERY EB 12 (W/ENGLISH N.P.)	1	FOR HOL.DEN

*: ALTERNATIVE PARTS

10 - 90

